

**SOLENOID VALVE PILOT OPERATED 2/2 WAY NORMALLY CLOSED**  
*Elettrovalvola 2/2 vie, normalmente chiusa, servo comandata*



**HIGHLIGHTS**

- 2/2 way pilot operated N.C
- 0.1 – 20 bar
- Available direct acting version
- Seals/Tenuta: NBR – EPDM – FKM
- High flow rate
- Available NSF approved model
- Serviceable Valve / Valvola ispezionabile
- Air – Water – Inert Gas – Light Oils
- 3 pole connector IP65 included - UNI ISO 4400 (DIN 43650A)

**PRODUCT DESCRIPTION**

Solenoid valve 2/2 way, normally closed, pilot operated. Also available with direct acting operation (8332-8333-8334). The body valve is made in brass as well as the core tube. The tube can be also unscrewed in order to make ordinary maintenance. It is suitable for various applications, compatible with different fluids and temperatures. Particularly indicated to drain condensate for compressor. Valve supplied with three pole connector IP65 - UNI ISO 4400 (DIN 43650A).



**DESCRIZIONE PRODOTTO**

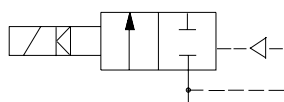
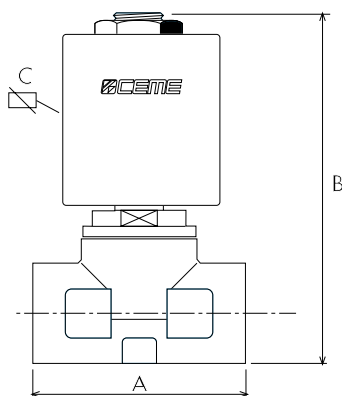
*Elettrovalvola 2/2 vie, normalmente chiusa, servo comandata. Disponibili anche versioni a comando diretto (8332-8333-8334). Il corpo è in ottone, così come il cannotto. Il cannotto è smontabile per consentire la manutenzione ordinaria della valvola. Può essere impiegata in numerose applicazioni, compatibile con diversi fluidi e temperature. Particolarmente indicata per lo scarico condensa dei compressori. Elettrovalvola fornita con connettore tripolare IP65 - UNI ISO 4400 (DIN 43650A).*

**GENERAL FEATURES / CARATTERISTICHE GENERALI**

Body material / Materiale corpo	Brass		
Seal material / Materiale guarnizioni	EPDM	NBR	FKM
Fluid Temp. °C / Temp. fluido °C	130°	90°	150°
Tube material / Materiale cannotto	Brass		
Working fluids / Fluidi di lavoro	Air, water, Inert Gas, Light Oils		
Electrical connect. / Connes. elettrica	6,3 x 0,8 fast-on terminal - UNI ISO 4400		
Insulation class / Classe di isolamento	H according to EN 60730		
Coil voltage / Voltaggio	220-230VAC 50-60Hz	100-120VAC 60Hz	12-24 VDC
Coil power / Potenza solenoide	18 VA	32 VA	21 W
Ambient temp. / Temp. ambiente	80 °C	80 °C	80 °C
Fluid temp. / Temp. fluido	140 °C	145 °C	140 °C
Approvals / Certificazioni	VDE; CE	UL	CE

**SPECIFICATIONS / CARATTERISTICHE**

	CONNECTION	ORIFICE Ø (mm)	KV m³/h	M.O.P.D. (bar)		DIMENSIONS (mm)			CODE
				AC	DC	A	B	C	
PILOT OPERATED	1/4 NPT	11	1,40	20	20	55	91	60	8302
	3/8 NPT	11	1,50	20	20	55	91	60	8303
	1/2 NPT	11	1,60	20	20	55	91	60	8304
	G 1/4	11	1,40	20	20	55	91	60	8322
	G 3/8	11	1,50	20	20	55	91	60	8323
	G 1/2	11	1,60	20	20	55	91	60	8324
DIRECT ACTING	G 1/4	11	1,50	0.5	0.3	55	91	60	8332
	G 3/8	11	1,60	0.5	0.3	55	91	60	8333
	G 1/2	11	1,70	0.5	0.3	55	91	60	8334



**FIXING POINTS**

**2/2 WAY N.C.**

IN/OUT

830...

