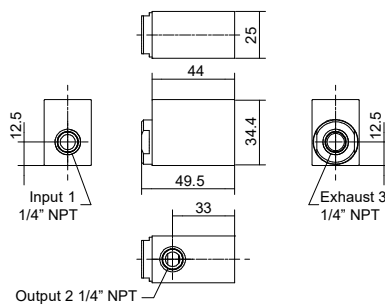
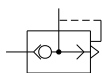


**Quick exhaust valve 1/4" NPT**



Ordering code

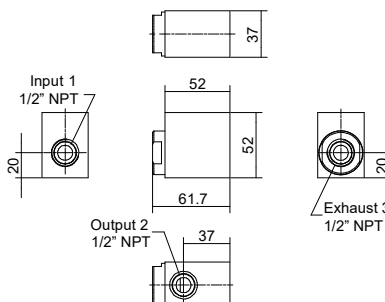
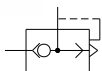
**SS1402SR**

TYPE

**T** L = Low temperature version  
H = High temperature version

Operational characteristics										
Maximum working pressure (bar)	Inlet flow rate at 6 bar with $\Delta p=1$ (NI/min)	Cv	kv	Flow rate from 2 to 3 at 6 bar on free exhaust (NI/min)	Cv	kv	Connections	Temperature °C		Weight (gr.)
12	700	0,71	10,60	2700	2,74	40,9	1/4" NPT	-50 ... +70 (version L)	-10 +150 (version H)	250

**Quick exhaust valve 1/2" NPT**



Ordering code

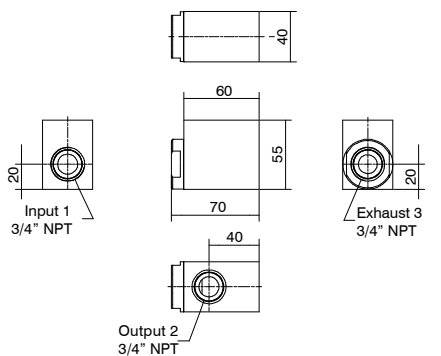
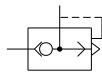
**SS1202SR**

TYPE

**T** L = Low temperature version  
H = High temperature version

Operational characteristics										
Maximum working pressure (bar)	Inlet flow rate at 6 bar with $\Delta p=1$ (NI/min)	Cv	kv	Flow rate from 2 to 3 at 6 bar on free exhaust (NI/min)	Cv	kv	Connections	Temperature °C		Weight (gr.)
12	2000	2,03	30,30	7150	7,26	108,33	1/2" NPT	-50 ... +70 (version L)	-10 +150 (version H)	617,5

**Quick exhaust valve 3/4" NPT**



Ordering code

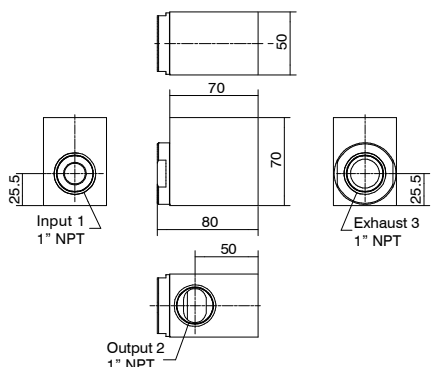
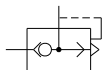
**SS3402SR**

TYPE

**T** L = Low temperature version  
H = High temperature version

Operational characteristics										
Maximum working pressure (bar)	Inlet flow rate at 6 bar with $\Delta p=1$ (NI/min)	Cv	kv	Flow rate from 2 to 3 at 6 bar on free exhaust (NI/min)	Cv	kv	Connections	Temperature °C		Weight (gr.)
12	3000	3,04	45,45	10000	10,16	151,51	3/4" NPT	-50 ... +70 (version L)	-10 +150 (version H)	745

**Quick exhaust valve 1" NPT**



Ordering code

**SS1102SR**

TYPE

**T** L = Low temperature version  
H = High temperature version

Operational characteristics										
Maximum working pressure (bar)	Inlet flow rate at 6 bar with $\Delta p=1$ (NI/min)	Cv	kv	Flow rate from 2 to 3 at 6 bar on free exhaust (NI/min)	Cv	kv	Connections	Temperature °C		Weight (gr.)
12	5000	5,08	75,75	18000	18,29	272,72	1" NPT	-50 ... +70 (version L)	-10 +150 (version H)	1365