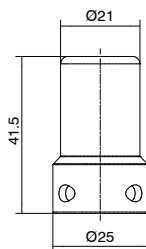


► **Flow regulator system 1/4" NPT tamper-proof system**

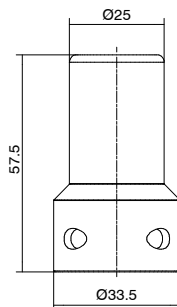
Ordering code
SS14RFK



Note: Available for 1/4" NPT flow regulator
We suggest using a long shackle padlock: Shackle diameter \leq 4mm
The padlock is not supplied with the product.
Weight gr. 40

► **Flow regulator system 1/2" NPT tamper-proof system**

Ordering code
SS12RFK



Note: Available for 1/2" NPT flow regulator
We suggest using a long shackle padlock: Shackle diameter \leq 5mm
The padlock is not supplied with the product.
Weight gr. 75