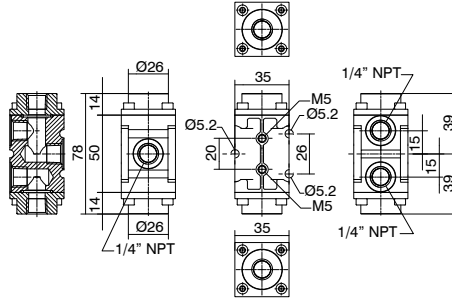


Flow divider, 2 outputs



Different types of dividers available on request.



Operational characteristics

Maximum working pressure (bar)	Flow rate at 6 bar with $\Delta p=1$ (Nl/min)	Connections	Weight (gr.)	Cv	kv
12	1700	1/4" NPT	390	1,73	25,75

Ordering code

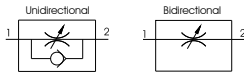
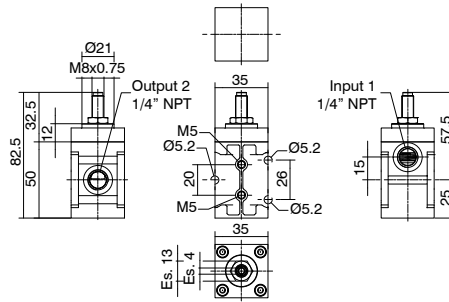
SS14T200T

TYPE

- T** L = Low temperature version
- H = High temperature version



Flow regulator 1/4" NPT



Operational characteristics

Maximum working pressure (bar)	Flow rate at 6 bar with $\Delta p=1$ (Nl/min)	Connections	Weight (gr.)	Cv	kv
12	1000	1/4" NPT	500	1,02	15,15

Ordering code

SS14RF6T

FUNCTION

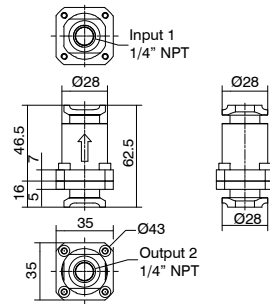
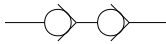
- F** U = Unidirectional
- B = Bidirectional

TYPE

- T** L = Low temperature version
- H = High temperature version



Non return valve



Operational characteristics

Maximum working pressure (bar)	Flow rate at 6 bar with $\Delta p=1$ (Nl/min)	Connections	Weight (gr.)	Cv	kv
12	1400	1/4" NPT	220	1,42	21,21

Ordering code

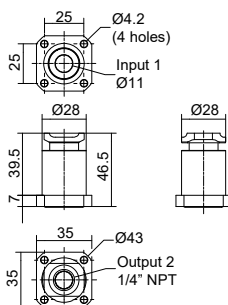
SS14VUS1

TYPE

- T** L = Low temperature version
- H = High temperature version



Non return valve for group



Operational characteristics

Maximum working pressure (bar)	Flow rate at 6 bar with $\Delta p=1$ (Nl/min)	Connections	Weight (gr.)	Cv	kv
12	1400	1/4" NPT	150	1,42	21,21

Ordering code

SS14VUG1

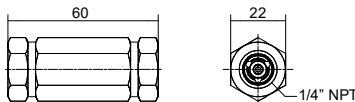
TYPE

- T** L = Low temperature version
- H = High temperature version





▶ Non return valve 1/4" NPT-F/F AISI 316L HT



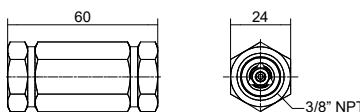
Weight gr. 107

Ordering code
SS14VU03SV4N

On request are available versions with temperature range: -55°C ... +150°C

Operational characteristics						
Maximum working pressure (bar)	Flow rate at 6 bar with $\Delta p=1$ (Nl/min)	Minimum operating pressure differential (bar)	Leak-tight with pressure differential (bar)	Temperature °C	Cv	kv
210	680	0,2	0,2	-25 ... +205	0,69	10,30

▶ Non return valve 3/8" NPT-F/F AISI 316L HT



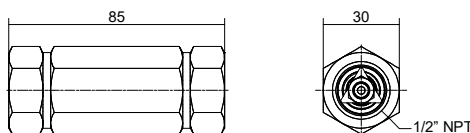
Weight gr. 253

Ordering code
SS38VU03SV6N

On request are available versions with temperature range: -55°C ... +150°C

Operational characteristics						
Maximum working pressure (bar)	Flow rate at 6 bar with $\Delta p=1$ (Nl/min)	Minimum operating pressure differential (bar)	Leak-tight with pressure differential (bar)	Temperature °C	Cv	kv
210	2020	0,2	0,2	-25 ... +205	2,05	30,60

▶ Non return valve 1/2" NPT-F/F AISI 316L HT



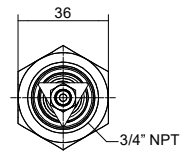
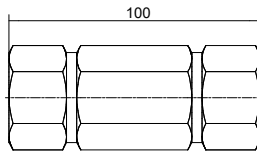
Weight gr. 380

Ordering code
SS12VU03SV8N

On request are available versions with temperature range: -55°C ... +150°C

Operational characteristics						
Maximum working pressure (bar)	Flow rate at 6 bar with $\Delta p=1$ (Nl/min)	Minimum operating pressure differential (bar)	Leak-tight with pressure differential (bar)	Temperature °C	Cv	kv
210	2650	0,2	0,2	-25 ... +205	2,69	40,15

▶ **Non return valve 3/4" NPT-F/F AISI 316L HT**



Weight gr. 577

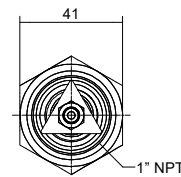
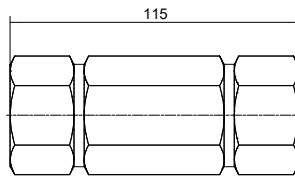
Operational characteristics

Maximum working pressure (bar)	Flow rate at 6 bar with $\Delta p=1$ (NI/min)	Minimum operating pressure differential (bar)	Leak-tight with pressure differential (bar)	Temperature °C	Cv	kv
210	4030	0,2	0,2	-25 ... +205	4,09	61,06

Ordering code
SS34VU03SV12N

On request are available versions with temperature range: -55°C ... +150°C

▶ **Non return valve 1" NPT-F/F AISI 316L HT**



Weight gr. 774

Operational characteristics

Maximum working pressure (bar)	Flow rate at 6 bar with $\Delta p=1$ (NI/min)	Minimum operating pressure differential (bar)	Leak-tight with pressure differential (bar)	Temperature °C	Cv	kv
210	5500	0,2	0,2	-25 ... +205	5,59	83,33

Ordering code
SS11VU03SV16N

On request are available versions with temperature range: -55°C ... +150°C