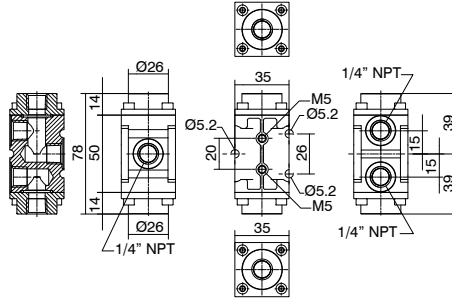


Flow divider, 2 outputs



Different types of dividers available on request.



Operational characteristics

Maximum working pressure (bar)	Flow rate at 6 bar with $\Delta p=1$ (NI/min)	Connections	Weight (gr.)	Cv	kv
12	1700	1/4" NPT	390	1,73	25,75

Ordering code

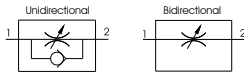
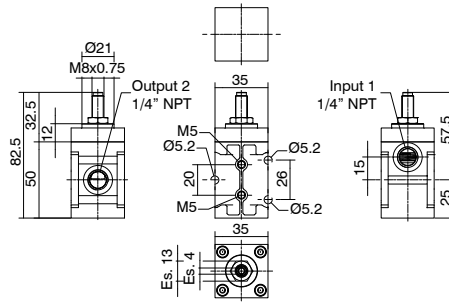
SS14T200T

TYPE

- T** L = Low temperature version
- H = High temperature version



Flow regulator 1/4" NPT



Operational characteristics

Maximum working pressure (bar)	Flow rate at 6 bar with $\Delta p=1$ (NI/min)	Connections	Weight (gr.)	Cv	kv
12	1000	1/4" NPT	500	1,02	15,15

Ordering code

SS14RF6T

FUNCTION

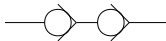
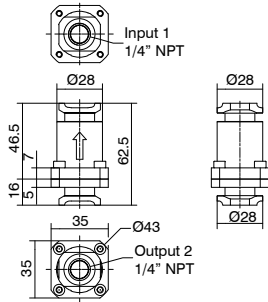
- F** U = Unidirectional
- B = Bidirectional

TYPE

- T** L = Low temperature version
- H = High temperature version



Non return valve



Operational characteristics

Maximum working pressure (bar)	Flow rate at 6 bar with $\Delta p=1$ (NI/min)	Connections	Weight (gr.)	Cv	kv
12	1400	1/4" NPT	220	1,42	21,21

Ordering code

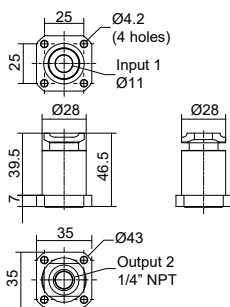
SS14VUS1

TYPE

- T** L = Low temperature version
- H = High temperature version



Non return valve for group



Operational characteristics

Maximum working pressure (bar)	Flow rate at 6 bar with $\Delta p=1$ (NI/min)	Connections	Weight (gr.)	Cv	kv
12	1400	1/4" NPT	150	1,42	21,21

Ordering code

SS14VUG1

TYPE

- T** L = Low temperature version
- H = High temperature version



