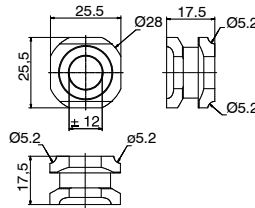




► Adapter for 90°



Ordering code

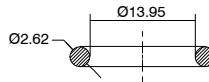
SS1490

Operational characteristics

Weight (gr.)

45

► Seal OR 2,62 x 13,95



Ordering code

SS14D^T

TYPE

- T** L = Low temperature version
- H = High temperature version

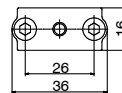
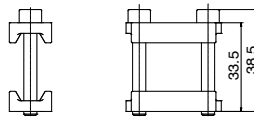
100-pieces pack.

Operational characteristics

Weight (gr.)

0,38

► Mounting kit "A"



Kit includes:
Nr. 1 Front flange
Nr. 1 Threaded rear flange
Nr. 2 Viti M5x35 AISI 316

Ordering code

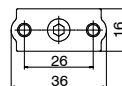
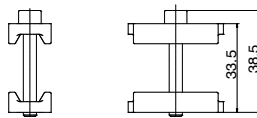
SS14A

Operational characteristics

Weight (gr.)

55

► Mounting kit "B"



Kit includes:
Nr. 1 Front flange
Nr. 1 Threaded rear flange
Nr. 1 Screw M5x35 AISI 316

Ordering code

SS14B

Operational characteristics

Weight (gr.)

48

Single deployment flange



Kit includes:
Nr. 1 Single deployment flange
Nr. 3 Screws M5x40 AISI 316
Nr. 2 Screws M5x8 AISI 316

Operational characteristics
Weight (gr.)
55



Ordering code

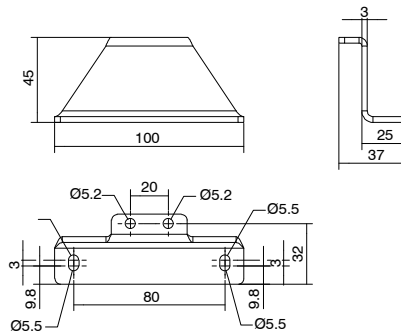
SS14C

Fixing bracket



Kit includes:
Nr. 2 Screws M5x8 AISI 316
Nr. 1 Flange

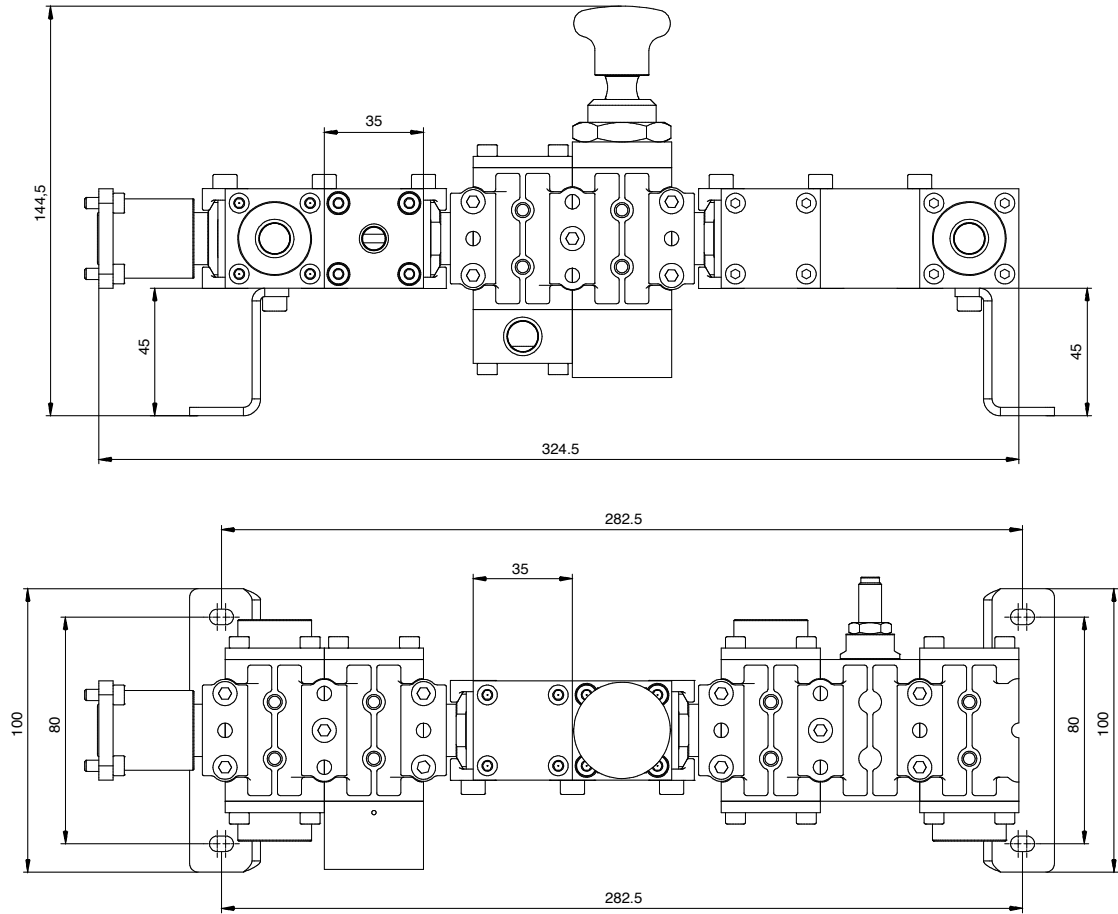
Operational characteristics
Weight (gr.)
125



Ordering code

SS14M5

Example: manifold system



Example: group assembly scheme

