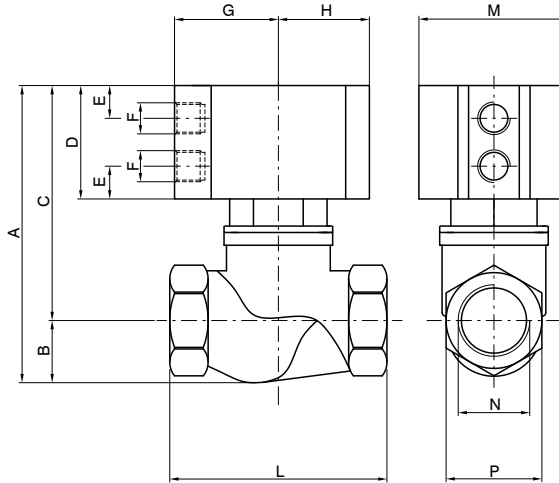




Series PVA

Brass body angle seat valves and pad valve.

▶ **"T" body version pad valve**



Ordering code	
PVA.B.A.P.T.C.M	
ACTING	
Ⓐ	DE= Double acting
	SC= Normally closed
	SA= Normally open
PISTON	
Ⓓ	N= Non magnetic
	M= Magnetic
CONNECTIONS	
A=	G1/4"
B=	G3/8"
C=	G1/2"
D=	G3/4"
E=	G1"
F=	G1 1/4"
G=	G1 1/2"
H=	G2"
SEALS	
Ⓜ	N= NBR
	V= FPM
	F= PTFE

Table of dimensions

Connection (N)	Non magnetic piston			Magnetic piston			B	E	F	G	H	L	M	P
	A	C	D	A	C	D								
G1/4"	93,5	77,5	41	97,5	81,5	45	16	10,25	G1/8"	32,5	28,5	64	47	25
G3/8"	93,5	77,5	41	97,5	81,5	45	16	10,25		32,5	28,5	64	47	25
G1/2"	93,5	78	41	99,5	82	45	17,5	10,25		32,5	28,5	68	47	30
G3/4"	105	83	41	113	90	48	22	11,25		44	40	79	70	36
G1"	117	89	41	125	101	53	28	11,25		44	40	94	70	44
G1 1/4"	131	103	48	136	108	53	28	11,25		44	40	110	70	55
G1 1/2"	154	118	57	166	130	69	36	13,75		56	49	120	90	60
G2"	169	124	57	181	136	69	45	13,75		56	49	140	90	73

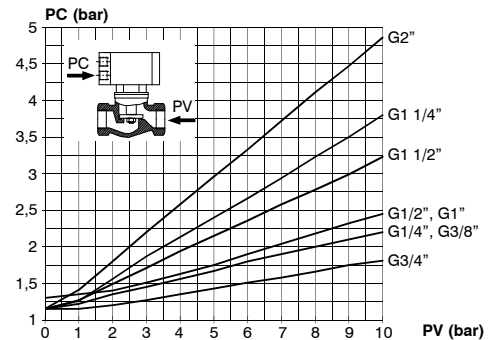
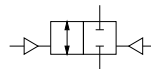
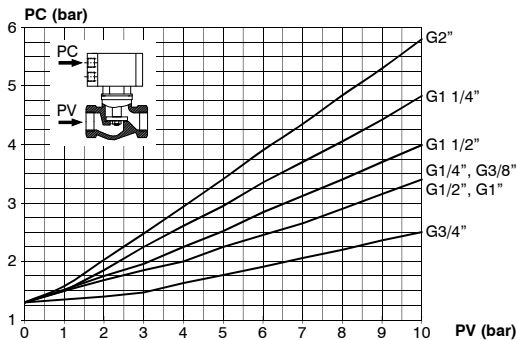
Technical data

Actuator (O)	Valve (O)	Weight (g)
40	13,5	350
40	13,5	350
40	15	400
63	20,5	850
63	25	1100
63	30	1400
80	38	2100
80	49,5	3000

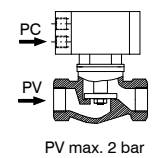
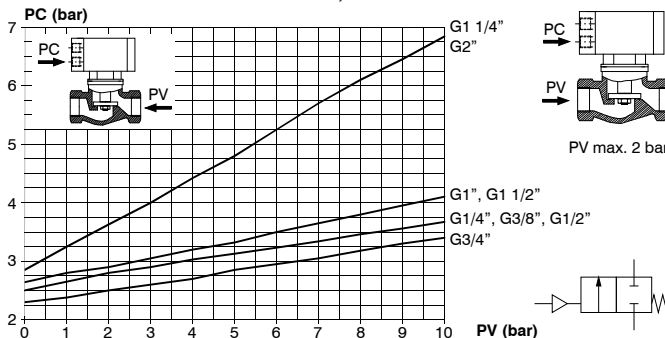
2-way valves, for interception of fluids, pneumatically actuated by a compact double or single acting cylinder with 360° swivel connections, NBR, FPM or PTFE seals in contact with the fluid. The barrel profile allows the use of magnetic sensors PNEUMAX code "1500_...", "RS_...", "RS_...", "HS_...", for sensor slot type "A" (see section 3, magnetic sensors series "SA" of the Pneumax General Catalogue).

Pressure curves

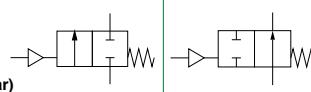
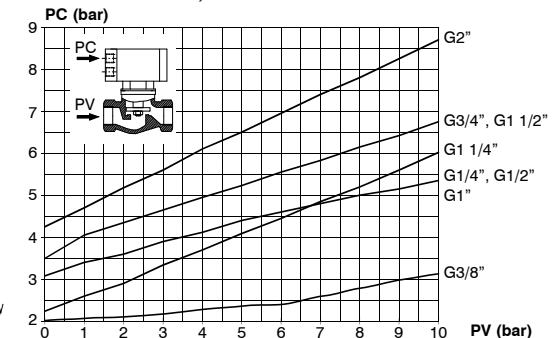
DOUBLE ACTING CYLINDER



SINGLE ACTING CYLINDER, NORMALLY CLOSED VALVE

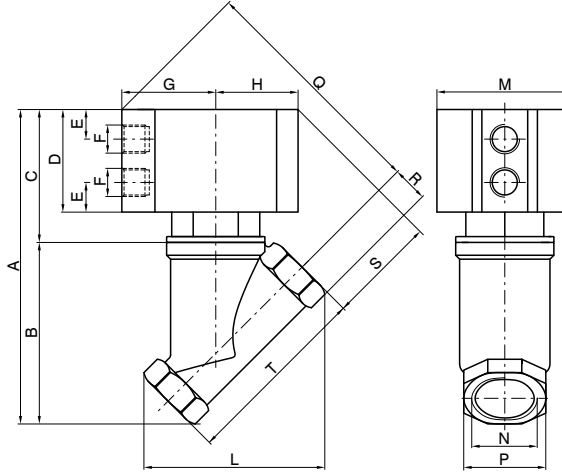


SINGLE ACTING CYLINDER, NORMALLY OPEN VALVE



Construction characteristics	Technical characteristics	
<ul style="list-style-type: none"> - Rear eye, piston and rod bushing: anodised aluminium - Cylinder: aluminium alloy anodised - Springs: zinc plated steel - Seals in contact with fluid: NBR, FPM, PTFE - Pneumatic cylinder seals: NBR, FPM, PTFE - Piston rod: chromed stainless steel - Bushing, bushing pad, nut pad: brass 	Pneumatic cylinder fluid	Filtered air. No lubrication needed, if applied it shall be continuous
	Valve fluid	Compatible fluid with seals compounds available
	Working pressure (Cylinder) (bar)	10
	Temperature °C (Non magnetic piston, NBR seals)	-10 ... +70
	Temperature °C (Non magnetic piston, FPM seals)	-10 ... +150
	Temperature °C (Non magnetic piston, PTFE seals)	-10 ... +150
	Temperature °C (Magnetic piston, NBR, FPM, PTFE seals)	-10 ... +70

“Y” body version pad valve



Ordering code	
PVA.B.A.ⓐ.Y.ⓐ.M	
ACTING	DE= Double acting
ⓐ	SC= Normally closed
	SA= Normally open
PISTON	
ⓑ	N= Non magnetic
	M= Magnetic
CONNECTIONS	
A=	G1/4"
B=	G3/8"
C=	G1/2"
ⓐ	D= G3/4"
	E= G1"
	F= G1 1/4"
	G= G1 1/2"
	H= G2"
SEALS	
ⓓ	N= NBR
	V= FPM
	F= PTFE

Table of dimensions

Connection (N)	Non magnetic piston					Magnetic piston					B	E	F	G	H	L	M	P	R	T
	A	C	D	Q	S	A	C	D	Q	S										
G1/4"	121	71	45	95	51	124	74	48	97	53	50	10,3	G1/8"	32,5	28,5	52	47	21	10,5	50
G3/8"	121	71	45	95	51	124	74	48	97	53	50	10,3		32,5	28,5	52	47	21	10,5	50
G1/2"	127	71	45	97	54	130	74	48	99	56	56	10,3		32,5	28,5	57	47	27	13,5	56
G3/4"	148	80	48	119	66	201	133	104	175	92	68	11,3		44	40	70	70	32	16	66
G1"	159	75	48	123	75	215	131	104	175	92	84	11,3		44	40	82	70	38	19	78
G1 1/4"	184	91	65	140	70	231	138	112	172	96	93	11,3		44	40	105	70	47	23,5	101
G1 1/2"	180	99	81	173	85	255	129	111	187	107	126	13,8		56	49	125	90	55	27,5	113
G2"	246	106	88	182	88	269	129	111	203	109	140	13,8		56	49	136	90	68	34	125

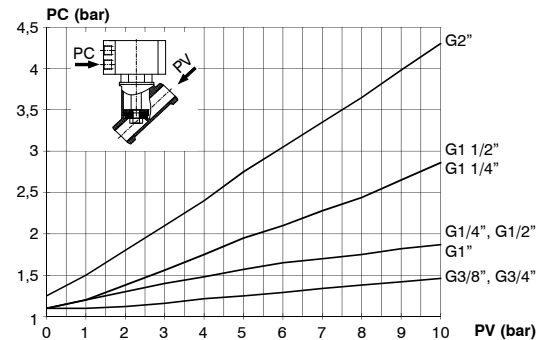
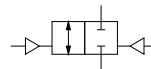
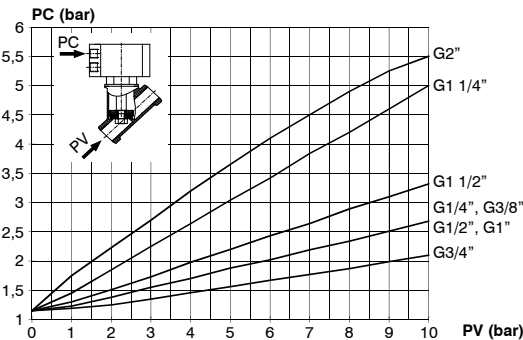
Technical data

Actuator (Ø)	Valve (Ø)	Weight (g)
40	13	350
40	13	350
40	13	400
63	18	850
63	21,5	850
63	30	1200
80	36	2000
80	46	2300

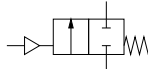
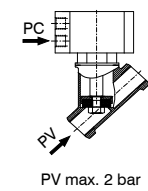
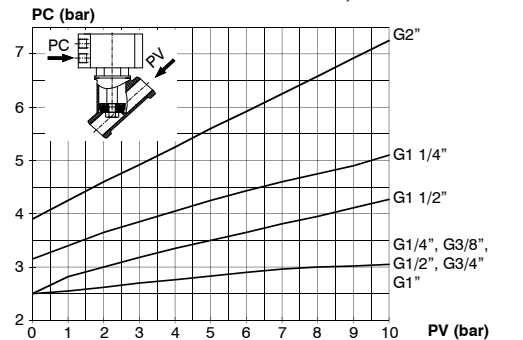
2-way valves, for interception of fluids, pneumatically actuated by a compact double or single acting cylinder with 360° swivel connections, NBR, FPM or PTFE seals in contact with the fluid. The barrel profile allows the use of magnetic sensors PNEUMAX code "1500_", "RS_...", "RS_...", "HS_...", for sensor slot type "A" (see section 3, magnetic sensors series "SA" of the Pneumax General Catalogue).

Pressure curves

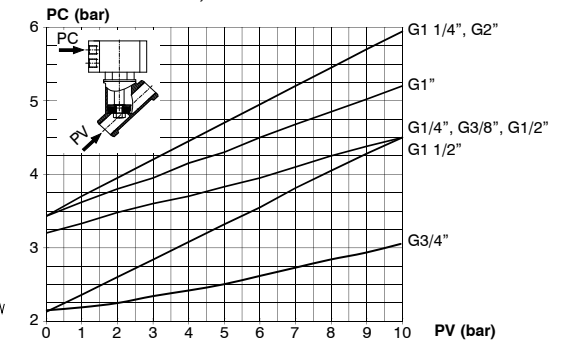
DOUBLE ACTING CYLINDER



SINGLE ACTING CYLINDER, NORMALLY CLOSED VALVE



SINGLE ACTING CYLINDER, NORMALLY OPEN VALVE



Construction characteristics	Technical characteristics
<ul style="list-style-type: none"> - Rear eye, piston and rod bushing: anodised aluminium - Cylinder: aluminium alloy anodised - Springs: zinc plated steel - Seals in contact with fluid: NBR, FPM, PTFE - Pneumatic cylinder seals: NBR, FPM, PTFE - Piston rod: chromed stainless steel - Bushing, bushing pad, nut pad: brass 	<p>Pneumatic cylinder fluid</p> <p>Filtered air. No lubrication needed, if applied it shall be continuous</p> <p>Valve fluid</p> <p>Compatible fluid with seals compounds available</p> <p>Working pressure (Cylinder) (bar)</p> <p>10</p> <p>Temperature °C (Non magnetic piston, NBR seals)</p> <p>-10 ... +70</p> <p>Temperature °C (Non magnetic piston, FPM seals)</p> <p>-10 ... +150</p> <p>Temperature °C (Non magnetic piston, PTFE seals)</p> <p>-10 ... +150</p> <p>Temperature °C (Magnetic piston, NBR, FPM, PTFE seals)</p> <p>-10 ... +70</p>