

## Valves 1/4" NPT series Steel line

**Pneumax** has wide experience and know-how to develop application-oriented solutions for the process industry, as well as a range of highperformance products aimed to improve the efficiency, productivity and quality of the process itself.

Each item passed thru internal long-ride severe test procedure and after validated through years of experience.

All certifications and relevant approvals are available.

Thanks to a global presence worldwide **Pneumax** can provide prompt assistance to any customer's specific needs. Our complete product range includes large number of products for day-by-day business.

At Pneumax the focus is always on customer satisfaction.

### General

Stainless steel brand series have been engineered and developed to meet process automation and Oil & Gas severe service requirements, where material performances, product reliability and health and safety issues are critical elements. As a result, Pneumax products are perfectly suitable to work with sweet gas media and corrosive / aggressive gases.

### Applications for actuation:

- ESDV – emergency shut-down valve.
- HIPPS - High-integrity pressure protection system.
- High pressure turbine control.
- Water service application.
- Control for gas/fluid.
- On-Off valve and control valve.

### Applications:

- Severe service operations.
- Low and high temperature application.
- Fire control system.
- Hazardous area.
- Offshore.
- Refineries.

**All external and internal parts are AISI316L stainless steel material in compliance with NACE standard MR0175/ISO 15156-1.**

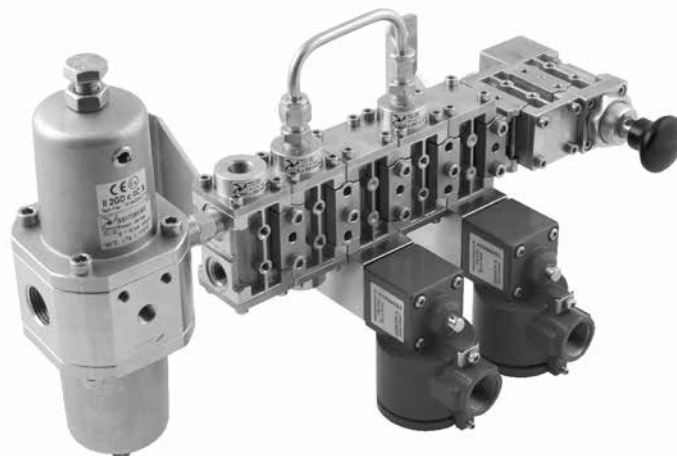
The range includes 3 and 5 way function valves, with the following functions available:

- Pneumatic-spring valve
- Pneumatic-pneumatic valve
- 2 position push-pull valve
- Push button-spring valve
- Push button-pneumatic return valve
- Tappet-spring valve
- Roller lever-spring valve
- Pneumatic valve with self-locking manual reset
- Pneumatic valve with self-locking manual reset inverted
- Key-spring valve
- Accessories which include: Non return valve, Uni/bidirectional flow regulator and Quick exhaust valve.
- Blocks dividers or shunts

### Modularity

1/4" size connection components minimum flow rate from 1000NI/min.

Thanks to customized body design configuration, Pneumax can provide pneumatic manifold solution, with compact design and easy installation operation.



Example: Module with redundants solenoids valves



### Construction characteristics

Body	AISI 316L stainless steel
Operators	AISI 316L stainless steel
Spool	AISI 316L stainless steel
Spring	AISI 316 stainless steel
Screws	AISI 316 stainless steel (A4-70 stainless steel)
Seals	FPM (Fluoroelastomer) NBR for low temperatures (-50°C) Standard

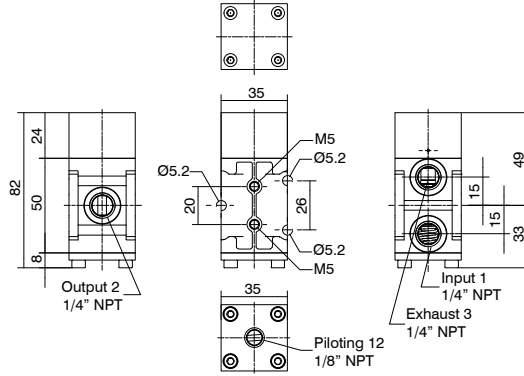
### Operating range

Fluid	Filtered air. No lubrication needed, if applied it shall be continuous. Inert Gas. Sweet gas (natural).
Operating temperature (for low temperature version L)	-50°C ... +70°C
Operating temperature (for low temperature version H)	-10°C ... +150°C
Maximum operating pressure	12 bar

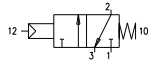
### Certifications available:



**Pneumatic-spring valve**



Minimum piloting pressure 2,5 bar  
Fluid:  
Filtered air. No lubrication needed, if applied it shall be continuous.  
Inert Gas.  
Sweet gas (natural).



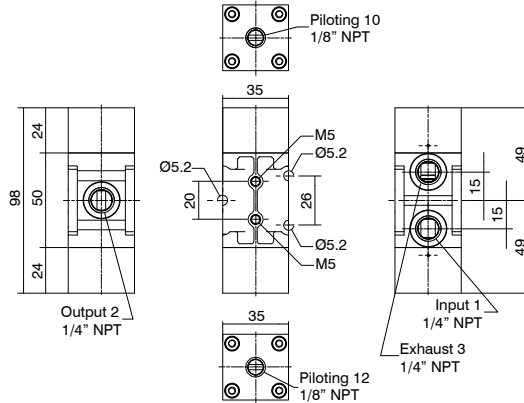
**Operational characteristics**

Maximum working pressure (bar)	Flow rate at 6 bar with $\Delta p=1$ (NI/min)	Connections	Pilot connections	Weight (gr.)	Cv	kv
12	1000	1/4" NPT	1/8" NPT	500	1,02	15,15

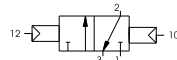
Ordering code  
**SS1432C1101**

TYPE  
**L** = Low temperature version  
**H** = High temperature version

**Pneumatic-pneumatic valve**



Minimum piloting pressure 2,5 bar  
Fluid:  
Filtered air. No lubrication needed, if applied it shall be continuous.  
Inert Gas.  
Sweet gas (natural).



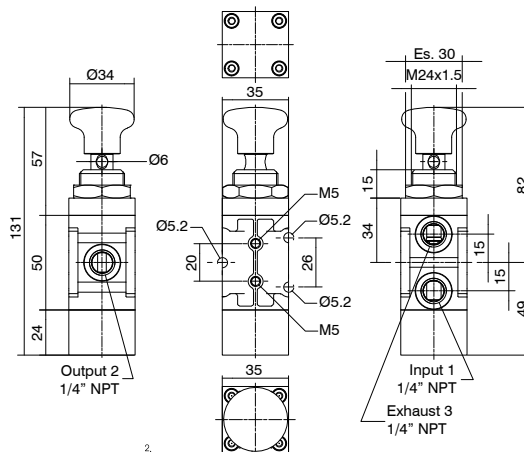
**Operational characteristics**

Maximum working pressure (bar)	Flow rate at 6 bar with $\Delta p=1$ (NI/min)	Connections	Pilot connections	Weight (gr.)	Cv	kv
12	1000	1/4" NPT	1/8" NPT	660	1,02	15,15

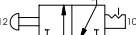
Ordering code  
**SS1432C1111**

TYPE  
**L** = Low temperature version  
**H** = High temperature version

**2 position push-pull valve**



Actuation force 55N.  
Fluid:  
Filtered air. No lubrication needed, if applied it shall be continuous.  
Inert Gas.  
Sweet gas (natural).



**Operational characteristics**

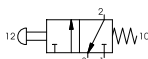
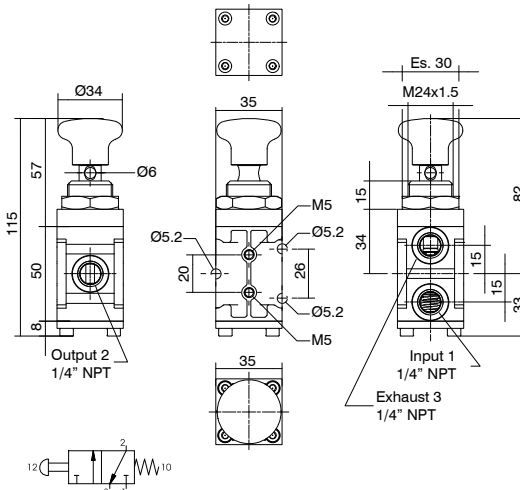
Maximum working pressure (bar)	Flow rate at 6 bar with $\Delta p=1$ (NI/min)	Connections	Weight (gr.)	Cv	kv
12	1000	1/4" NPT	620	1,02	15,15

Ordering code  
**SS1432C0802**

TYPE  
**L** = Low temperature version  
**H** = High temperature version



**Push button-spring valve**



Fluid:  
Filtered air. No lubrication needed, if applied it shall be continuous.  
Inert Gas.  
Sweet gas (natural).

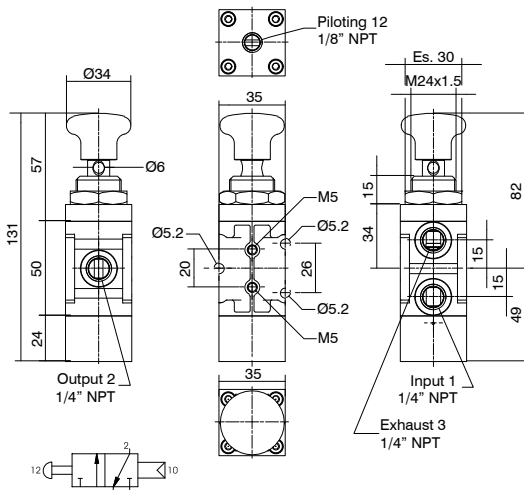
Ordering code  
**SS1432C0801**

TYPE  
L = Low temperature version  
H = High temperature version

Actuation force at 2 bar = 55N  
Actuation force at 12 bar = 105N

Operational characteristics					
Maximum working pressure (bar)	Flow rate at 6 bar with $\Delta p=1$ (NI/min)	Connections	Weight (gr.)	Cv	kv
12	1000	1/4" NPT	470	1,02	15,15

**Push button-pneumatic return valve**



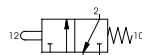
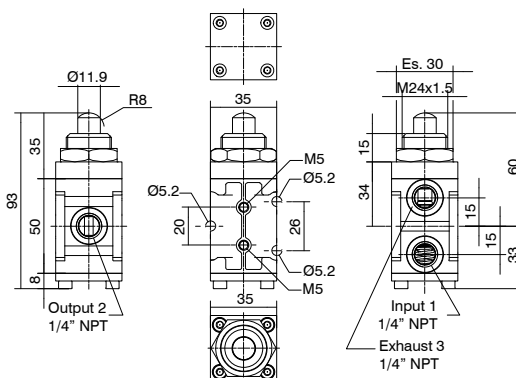
Minimum piloting pressure 2,5 bar  
Fluid:  
Filtered air. No lubrication needed, if applied it shall be continuous.  
Inert Gas.  
Sweet gas (natural).

Ordering code  
**SS1432C0811**

TYPE  
L = Low temperature version  
H = High temperature version

Operational characteristics						
Maximum working pressure (bar)	Flow rate at 6 bar with $\Delta p=1$ (NI/min)	Connections	Pilot connections	Weight (gr.)	Cv	kv
12	1000	1/4" NPT	1/8" NPT	600	1,02	15,15

**Tappet-spring valve**



Fluid:  
Filtered air. No lubrication needed, if applied it shall be continuous.  
Inert Gas.  
Sweet gas (natural).

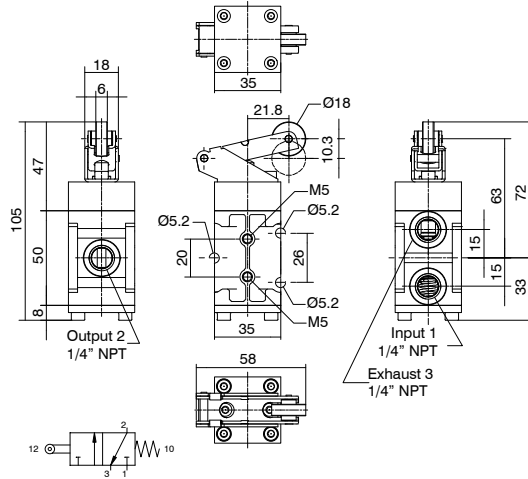
Ordering code  
**SS1432C0001**

TYPE  
L = Low temperature version  
H = High temperature version

Actuation force at 2 bar = 55N  
Actuation force at 12 bar = 105N

Operational characteristics					
Maximum working pressure (bar)	Flow rate at 6 bar with $\Delta p=1$ (NI/min)	Connections	Weight (gr.)	Cv	kv
12	1000	1/4" NPT	450	1,02	15,15

Roller lever-spring valve



Fluid:  
Filtered air. No lubrication needed, if applied it shall be continuous.  
Inert Gas.  
Sweet gas (natural).

Actuation force at 2 bar = 55N  
Actuation force at 12 bar = 105N

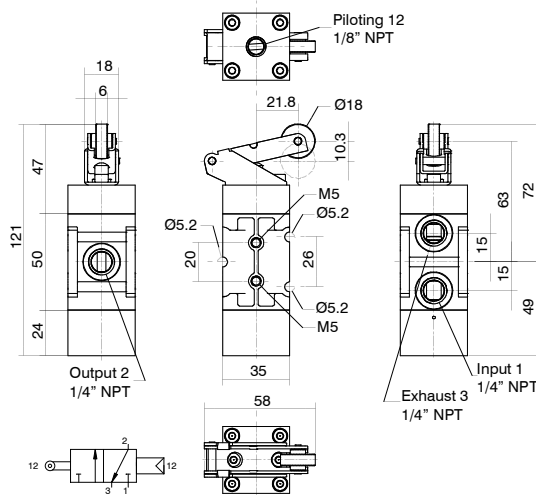
Operational characteristics

Maximum working pressure (bar)	Flow rate at 6 bar with $\Delta p=1$ (NI/min)	Connections	Weight (gr.)	Cv	kv
12	1000	1/4" NPT	480	1,02	15,15

Ordering code  
**SS1432C0401**

TYPE  
L = Low temperature version  
H = High temperature version

Roller lever-pneumatic valve



Fluid:  
Filtered air. No lubrication needed, if applied it shall be continuous.  
Inert Gas.  
Sweet gas (natural).

Minimum piloting pressure 2,5 bar

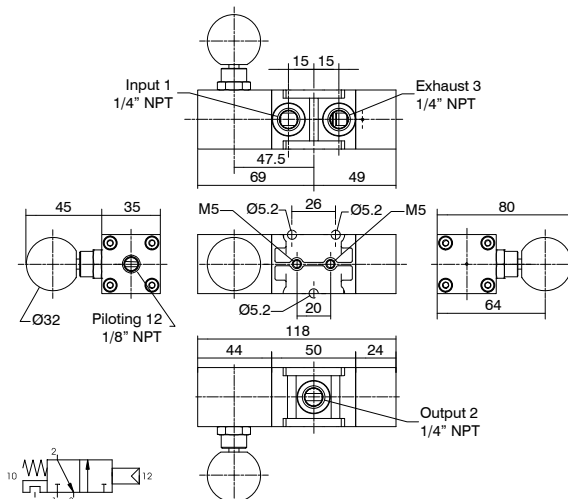
Operational characteristics

Maximum working pressure (bar)	Flow rate at 6 bar with $\Delta p=1$ (NI/min)	Connections	Weight (gr.)	Cv	kv
12	1000	1/4" NPT	480	1,02	15,15

Ordering code  
**SS1432C0411**

TYPE  
L = Low temperature version  
H = High temperature version

Pneumatic valve with self-locking manual reset



Minimum piloting pressure 2,5 bar  
Fluid:  
Filtered air. No lubrication needed, if applied it shall be continuous.  
Inert Gas.  
Sweet gas (natural).

Ordering code  
**SS1432C1114**

TYPE  
L = Low temperature version  
H = High temperature version

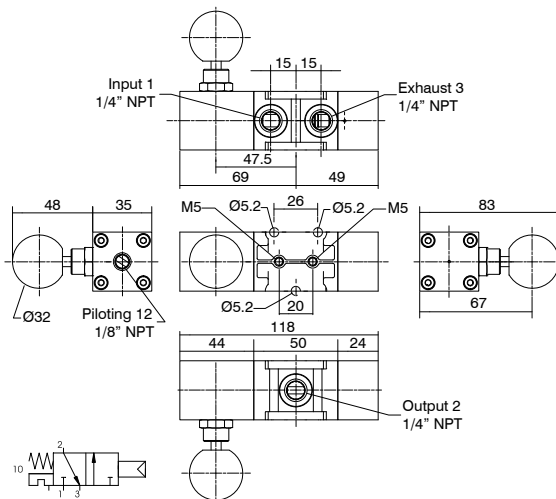
Operational characteristics

Maximum working pressure (bar)	Flow rate at 6 bar with $\Delta p=1$ (NI/min)	Connections	Pilot connections	Weight (gr.)	Cv	kv
12	1000	1/4" NPT	1/8" NPT	860	1,02	15,15

**Pneumatic valve with self-locking manual reset inverted**



Minimum piloting pressure 2,5 bar  
Fluid:  
Filtered air. No lubrication needed, if applied it shall be continuous.  
Inert Gas.  
Sweet gas (natural).

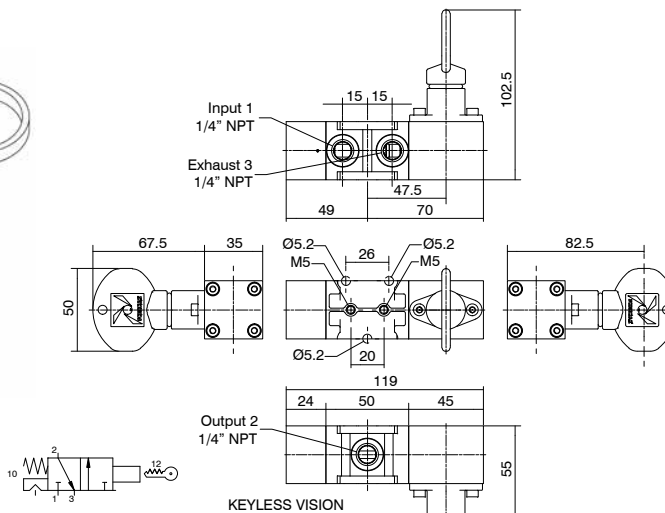


Ordering code  
**SS1432C1115**

TYPE  
**T** L = Low temperature version  
 H = High temperature version

Operational characteristics						
Maximum working pressure (bar)	Flow rate at 6 bar with $\Delta p=1$ (NI/min)	Connections	Pilot connections	Weight (gr.)	Cv	kv
12	1000	1/4" NPT	1/8" NPT	860	1,02	15,15

**Key-spring valve stable**

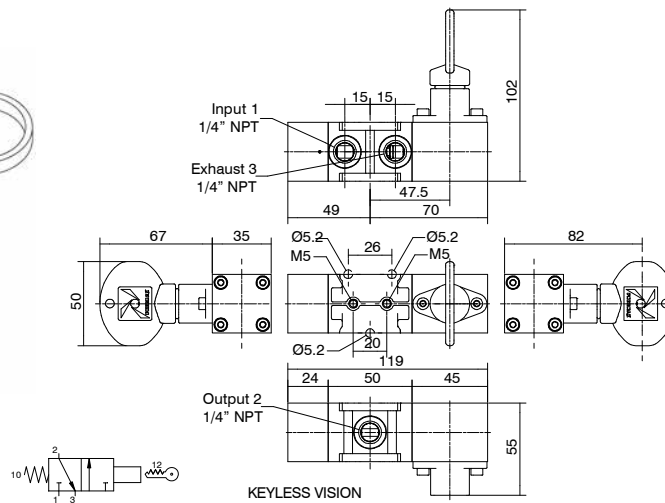


Ordering code  
**SS1432C1601**

TYPE  
**T** L = Low temperature version  
 H = High temperature version

Operational characteristics						
Maximum working pressure (bar)	Flow rate at 6 bar with $\Delta p=1$ (NI/min)	Connections	Weight (gr.)	Cv	kv	
12	1000	1/4" NPT	1020	1,02	15,15	

**Key-spring valve instable**



Ordering code  
**SS1432C2601**

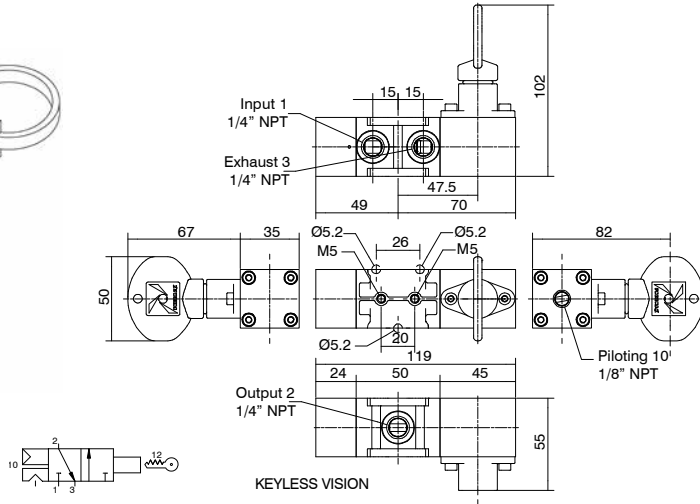
TYPE  
**T** L = Low temperature version  
 H = High temperature version

Operational characteristics						
Maximum working pressure (bar)	Flow rate at 6 bar with $\Delta p=1$ (NI/min)	Connections	Weight (gr.)	Cv	kv	
12	1000	1/4" NPT	1020	1,02	15,15	

**Pneumatic-key valve stable**



Minimum piloting pressure 2,5 bar, after the valve unlock.



Ordering code  
**SS1432C1611**

TYPE  
**L** = Low temperature version  
**H** = High temperature version

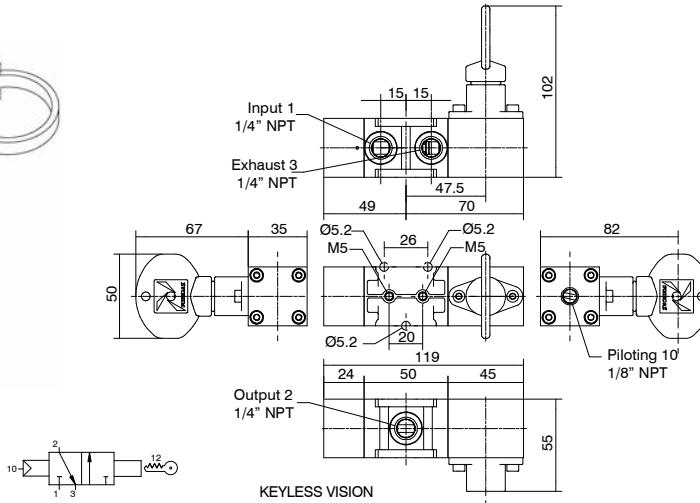
**Operational characteristics**

Maximum working pressure (bar)	Flow rate at 6 bar with $\Delta p=1$ (NI/min)	Connections	Weight (gr.)	Cv	kv
12	1000	1/4" NPT	1020	1,02	15,15

**Pneumatic-key valve instable**



Minimum piloting pressure 2,5 bar



Ordering code  
**SS1432C2611**

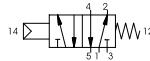
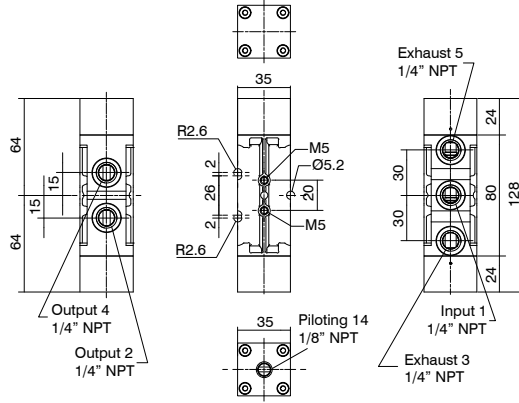
TYPE  
**L** = Low temperature version  
**H** = High temperature version

**Operational characteristics**

Maximum working pressure (bar)	Flow rate at 6 bar with $\Delta p=1$ (NI/min)	Connections	Weight (gr.)	Cv	kv
12	1000	1/4" NPT	1020	1,02	15,15



**Pneumatic-spring valve**



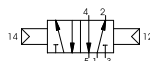
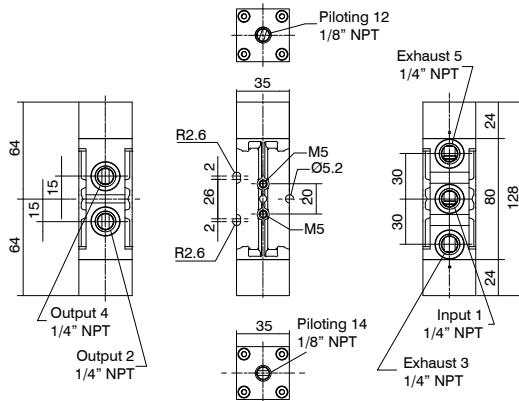
Minimum piloting pressure 2,5 bar  
Fluid:  
Filtered air. No lubrication needed, if applied it shall be continuous.  
Inert Gas.  
Sweet gas (natural).

Operational characteristics						
Maximum working pressure (bar)	Flow rate at 6 bar with $\Delta p=1$ (NI/min)	Connections	Pilot connections	Weight (gr.)	Cv	kv
12	1000	1/4" NPT	1/8" NPT	820	1,02	15,15

Ordering code  
**SS145201101**

TYPE  
L = Low temperature version  
H = High temperature version

**Pneumatic-pneumatic valve**



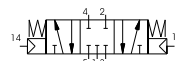
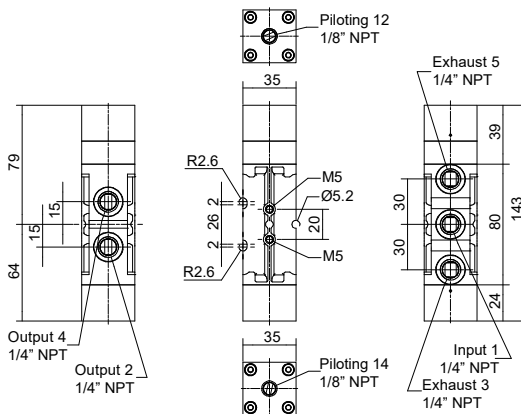
Minimum piloting pressure 2,5 bar  
Fluid:  
Filtered air. No lubrication needed, if applied it shall be continuous.  
Inert Gas.  
Sweet gas (natural).

Operational characteristics						
Maximum working pressure (bar)	Flow rate at 6 bar with $\Delta p=1$ (NI/min)	Connections	Pilot connections	Weight (gr.)	Cv	kv
12	1000	1/4" NPT	1/8" NPT	820	1,02	15,15

Ordering code  
**SS145201111**

TYPE  
L = Low temperature version  
H = High temperature version

**Pneumatic-pneumatic closed centers valve**



Minimum piloting pressure 2,5 bar  
Fluid:  
Filtered air. No lubrication needed, if applied it shall be continuous.  
Inert Gas.  
Sweet gas (natural).

Operational characteristics						
Maximum working pressure (bar)	Flow rate at 6 bar with $\Delta p=1$ (NI/min)	Connections	Pilot connections	Weight (gr.)	Cv	kv
12	1000	1/4" NPT	1/8" NPT	931	1,02	15,15

Ordering code  
**SS145311111**

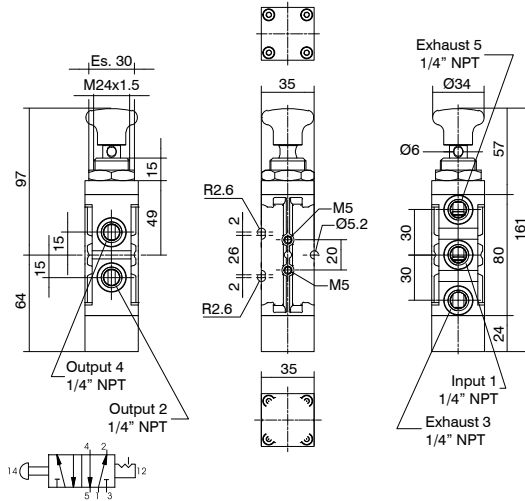
TYPE  
L = Low temperature version  
H = High temperature version



2 position push-pull valve



Actuation force 55N.  
Fluid:  
Filtered air. No lubrication needed, if applied it shall be continuous.  
Inert Gas.  
Sweet gas (natural).



Ordering code  
**SS145200802T**

TYPE  
**T** L = Low temperature version  
 H = High temperature version

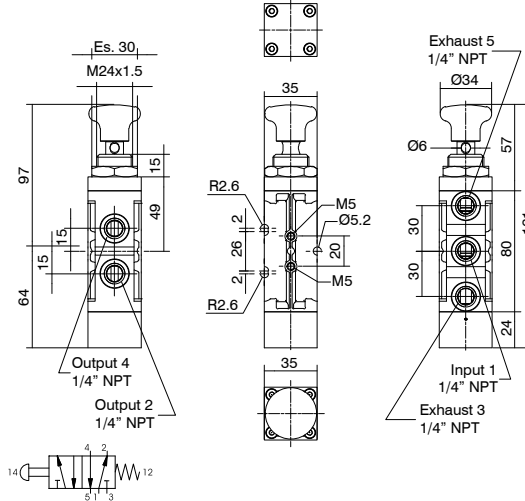
Operational characteristics

Maximum working pressure (bar)	Flow rate at 6 bar with $\Delta p=1$ (NI/min)	Connections	Weight (gr.)	Cv	kv
12	1000	1/4" NPT	770	1,02	15,15

Push button-spring valve



Actuation force 90N  
Fluid:  
Filtered air. No lubrication needed, if applied it shall be continuous.  
Inert Gas.  
Sweet gas (natural).



Ordering code  
**SS145200801T**

TYPE  
**T** L = Low temperature version  
 H = High temperature version

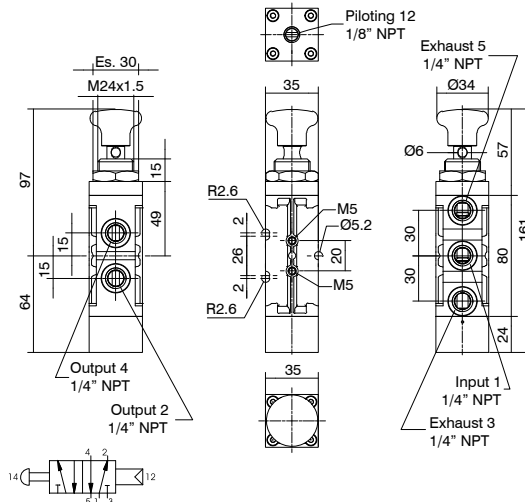
Operational characteristics

Maximum working pressure (bar)	Flow rate at 6 bar with $\Delta p=1$ (NI/min)	Connections	Weight (gr.)	Cv	kv
12	1000	1/4" NPT	780	1,02	15,15

Push button-pneumatic return valve



Minimum piloting pressure 2,5 bar  
Fluid:  
Filtered air. No lubrication needed, if applied it shall be continuous.  
Inert Gas.  
Sweet gas (natural).



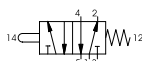
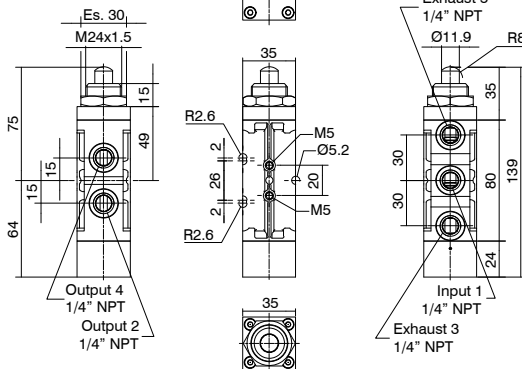
Ordering code  
**SS145200811T**

TYPE  
**T** L = Low temperature version  
 H = High temperature version

Operational characteristics

Maximum working pressure (bar)	Flow rate at 6 bar with $\Delta p=1$ (NI/min)	Connections	Pilot connections	Weight (gr.)	Cv	kv
12	1000	1/4" NPT	1/8" NPT	780	1,02	15,15

**Tappet-spring valve**



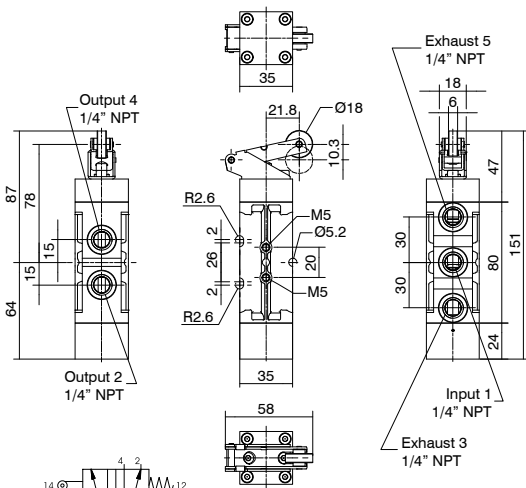
Actuation force 90N  
Fluid:  
Filtered air. No lubrication needed, if applied it shall be continuous.  
Inert Gas.  
Sweet gas (natural).

Ordering code  
**SS145200001**

TYPE  
L = Low temperature version  
H = High temperature version

Operational characteristics					
Maximum working pressure (bar)	Flow rate at 6 bar with $\Delta p=1$ (NI/min)	Connections	Weight (gr.)	Cv	kv
12	1000	1/4" NPT	770	1,02	15,15

**Roller lever-spring valve**



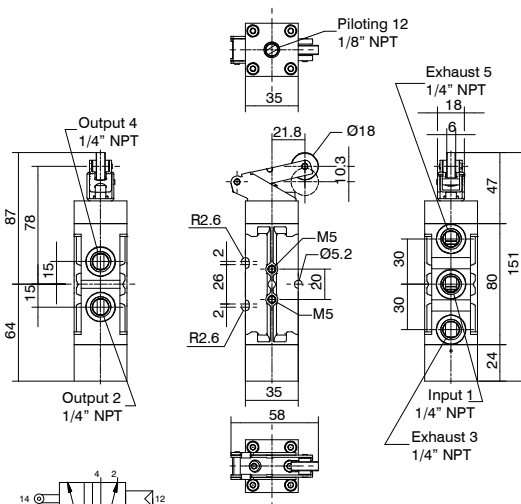
Actuation force 90N  
Fluid:  
Filtered air. No lubrication needed, if applied it shall be continuous.  
Inert Gas.  
Sweet gas (natural).

Ordering code  
**SS145200401**

TYPE  
L = Low temperature version  
H = High temperature version

Operational characteristics					
Maximum working pressure (bar)	Flow rate at 6 bar with $\Delta p=1$ (NI/min)	Connections	Weight (gr.)	Cv	kv
12	1000	1/4" NPT	800	1,02	15,15

**Roller lever-spring valve**



Minimum piloting pressure 2,5 bar  
Fluid:  
Filtered air. No lubrication needed, if applied it shall be continuous.  
Inert Gas.  
Sweet gas (natural).

Ordering code  
**SS145200411**

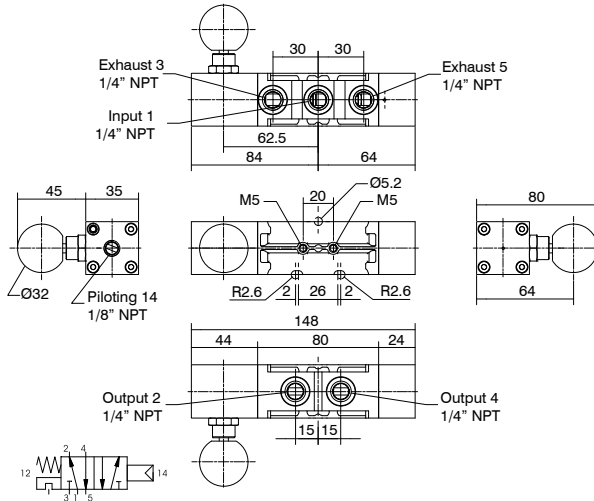
TYPE  
L = Low temperature version  
H = High temperature version

Operational characteristics					
Maximum working pressure (bar)	Flow rate at 6 bar with $\Delta p=1$ (NI/min)	Connections	Weight (gr.)	Cv	kv
12	1000	1/4" NPT	800	1,02	15,15

**Pneumatic valve with self-locking manual reset**



Minimum piloting pressure 2,5 bar  
Fluid:  
Filtered air. No lubrication needed, if applied it shall be continuous.  
Inert Gas.  
Sweet gas (natural).



Ordering code  
**SS145201114T**

TYPE  
**T** L = Low temperature version  
 H = High temperature version

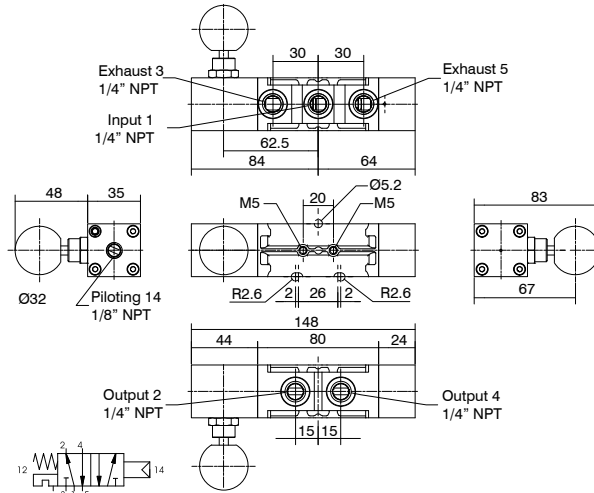
**Operational characteristics**

Maximum working pressure (bar)	Flow rate at 6 bar with $\Delta p=1$ (NI/min)	Connections	Pilot connections	Weight (gr.)	Cv	kv
12	1000	1/4" NPT	1/8" NPT	1020	1,02	15,15

**Pneumatic valve with self-locking manual reset inverted**



Minimum piloting pressure 2,5 bar  
Fluid:  
Filtered air. No lubrication needed, if applied it shall be continuous.  
Inert Gas.  
Sweet gas (natural).



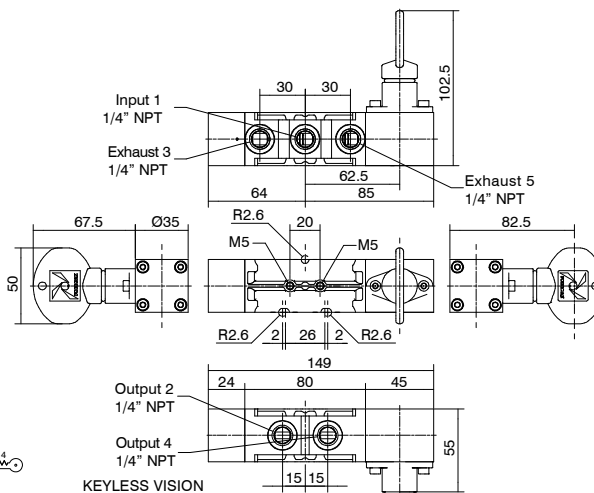
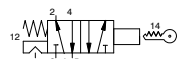
Ordering code  
**SS145201115T**

TYPE  
**T** L = Low temperature version  
 H = High temperature version

**Operational characteristics**

Maximum working pressure (bar)	Flow rate at 6 bar with $\Delta p=1$ (NI/min)	Connections	Pilot connections	Weight (gr.)	Cv	kv
12	1000	1/4" NPT	1/8" NPT	1020	1,02	15,15

**Key-spring valve stable**



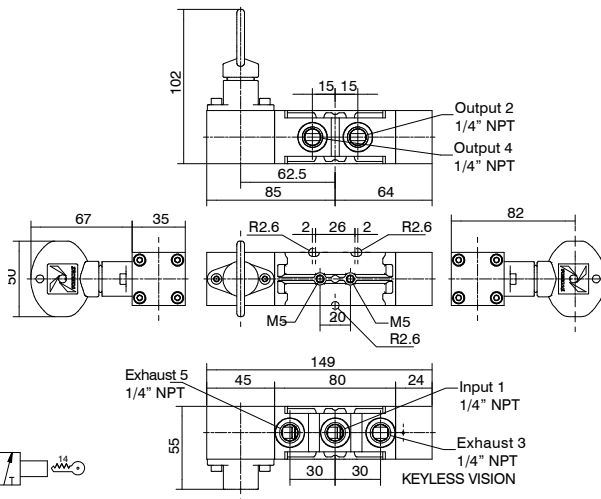
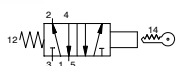
Ordering code  
**SS145201601T**

TYPE  
**T** L = Low temperature version  
 H = High temperature version

**Operational characteristics**

Maximum working pressure (bar)	Flow rate at 6 bar with $\Delta p=1$ (NI/min)	Connections	Weight (gr.)	Cv	kv
12	1000	1/4" NPT	1180	1,02	15,15

Key-spring valve instable



Ordering code

SS145202601

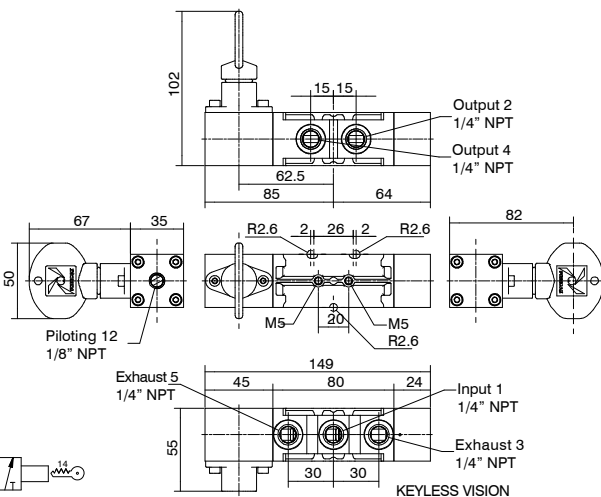
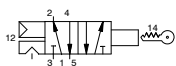
TYPE

- L = Low temperature version
- H = High temperature version



Operational characteristics					
Maximum working pressure (bar)	Flow rate at 6 bar with $\Delta p=1$ (NI/min)	Connections	Weight (gr.)	Cv	kv
12	1000	1/4" NPT	1180	1,02	15,15

Pneumatic-key valve stable



Ordering code

SS145201611

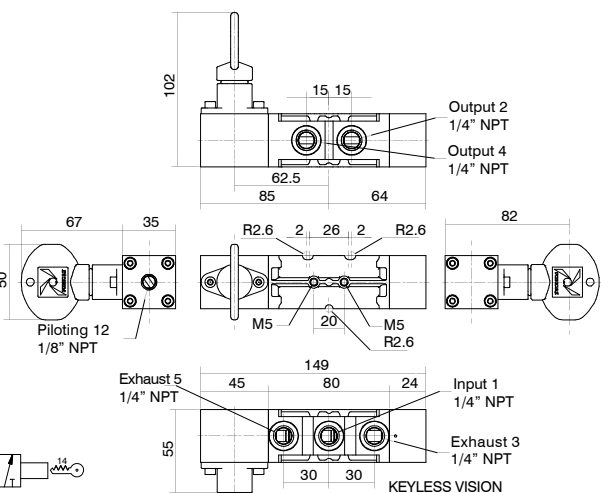
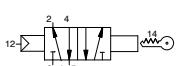
TYPE

- L = Low temperature version
- H = High temperature version



Operational characteristics					
Maximum working pressure (bar)	Flow rate at 6 bar with $\Delta p=1$ (NI/min)	Connections	Weight (gr.)	Cv	kv
12	1000	1/4" NPT	1180	1,02	15,15

Pneumatic-key valve instable



Ordering code

SS145202611

TYPE

- L = Low temperature version
- H = High temperature version



Operational characteristics					
Maximum working pressure (bar)	Flow rate at 6 bar with $\Delta p=1$ (NI/min)	Connections	Weight (gr.)	Cv	kv
12	1000	1/4" NPT	1180	1,02	15,15