

Valves 1/2" NPT series Steel line

Stainless steel brand series have been engineered and developed to meet process automation and Oil & Gas severe service requirements, where material performances, product reliability and health and safety issues are critical elements. As a result, Pneumax products are perfectly suitable to work with sweet gas media and corrosive / aggressive gases.

All external and internal parts are AISI316L stainless steel material in compliance with NACE standard MR0175/ISO 15156-1.

The range includes 3 and 5 ways valves, designed according to the following configuration:

- Pneumatic-spring valve
- Solenoid-solenoid valve
- 2 position push-pull valve
- Push button-spring valve
- Push button-pneumatic return valve
- Pneumatic valve with self-locking manual reset **(only in a 3 way function)**
- Pneumatic valve with self-locking manual reset inverted **(only in a 3 way function)**
- Accessories: Non return valve, Uni/bidirectional flow regulator and Quick exhaust valve.

Pneumax valves have 1/2" NPT connections with 3500NI/min maximum flow rate.

This version only provides single mounting.

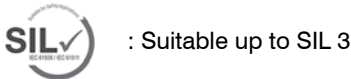
Construction characteristics

Body	AISI 316L stainless steel
Operators	AISI 316L stainless steel
Spool	AISI 316L stainless steel
Spring	AISI 316 stainless steel
Screws	AISI 316 stainless steel (A4-70 stainless steel)
Seals	FPM (Fluoroelastomer) NBR for low temperatures (-50°C) Standard

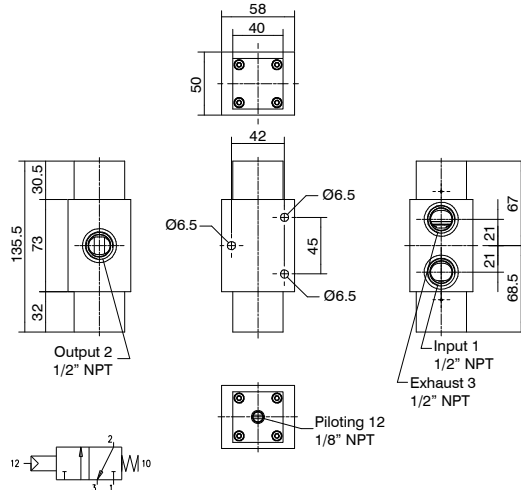
Operating range

Fluid	Filtered air. No lubrication needed, if applied it shall be continuous. Inert Gas. Sweet gas (natural).
Operating temperature (for low temperature version L)	-50°C ... +70°C
Operating temperature (for low temperature version H)	-10°C ... +150°C
Maximum operating pressure	12 bar

Certifications available:



Pneumatic-spring valve



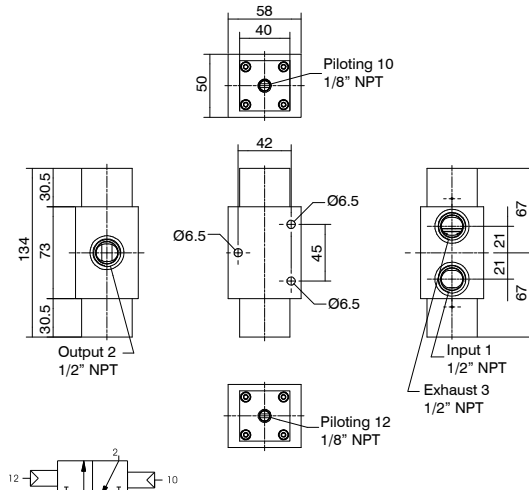
Minimum piloting pressure 3 bar
Fluid:
Filtered air. No lubrication needed, if applied it shall be continuous.
Inert Gas.
Sweet gas (natural).

Ordering code
SS1232C1101T

TYPE
T L = Low temperature version
H = High temperature version

Operational characteristics						
Maximum working pressure (bar)	Flow rate at 6 bar with $\Delta p=1$ (NI/min)	Connections	Pilot connections	Weight (gr.)	Cv	kv
12	3500	1/2" NPT	1/8" NPT	1992	3,55	53,03

Pneumatic-pneumatic valve



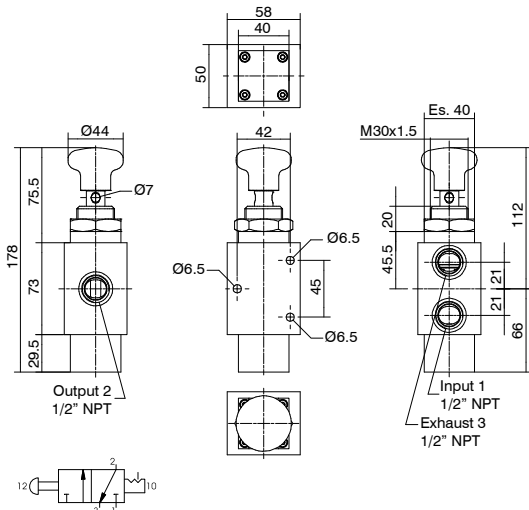
Minimum piloting pressure 3 bar
Fluid:
Filtered air. No lubrication needed, if applied it shall be continuous.
Inert Gas.
Sweet gas (natural).

Ordering code
SS1232C1111T

TYPE
T L = Low temperature version
H = High temperature version

Operational characteristics						
Maximum working pressure (bar)	Flow rate at 6 bar with $\Delta p=1$ (NI/min)	Connections	Pilot connections	Weight (gr.)	Cv	kv
12	3500	1/2" NPT	1/8" NPT	2001	3,55	53,03

2 position push-pull valve



Actuation force 55N.
Fluid:
Filtered air. No lubrication needed, if applied it shall be continuous.
Inert Gas.
Sweet gas (natural).

Ordering code
SS1232C0802T

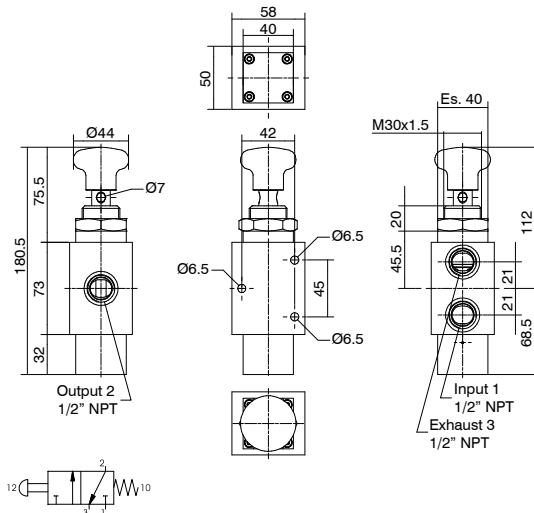
TYPE
T L = Low temperature version
H = High temperature version

Operational characteristics						
Maximum working pressure (bar)	Flow rate at 6 bar with $\Delta p=1$ (NI/min)	Connections	Weight (gr.)	Cv	kv	
12	3500	1/2" NPT	2027	3,55	53,03	

Push button-spring valve



Actuation force 200N
Fluid:
Filtered air. No lubrication needed, if applied it shall be continuous.
Inert Gas.
Sweet gas (natural).



Ordering code
SS1232C0801

TYPE
L = Low temperature version
H = High temperature version

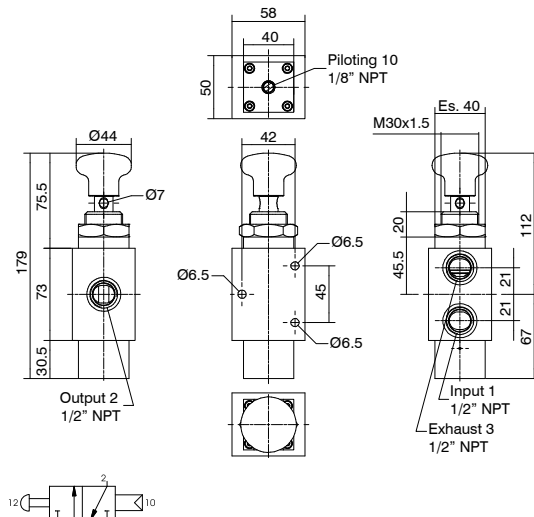
Operational characteristics

Maximum working pressure (bar)	Flow rate at 6 bar with $\Delta p=1$ (Nl/min)	Connections	Weight (gr.)	Cv	kv
12	3500	1/2" NPT	2000	3,55	53,03

Push button-pneumatic return valve



Fluid:
Filtered air. No lubrication needed, if applied it shall be continuous.
Inert Gas.
Sweet gas (natural).



Ordering code
SS1232C0811

TYPE
L = Low temperature version
H = High temperature version

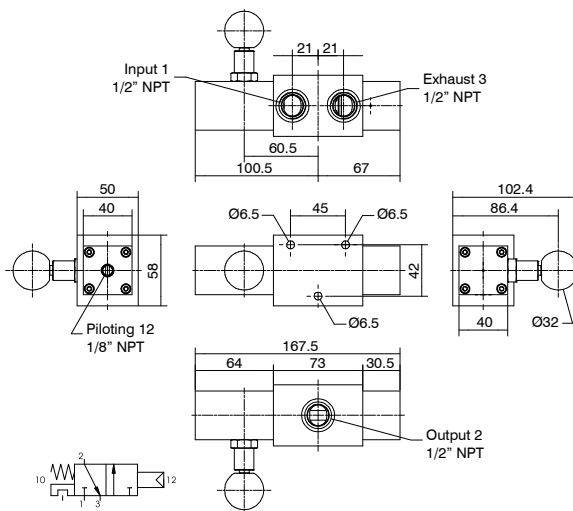
Operational characteristics

Maximum working pressure (bar)	Flow rate at 6 bar with $\Delta p=1$ (Nl/min)	Connections	Pilot connections	Weight (gr.)	Cv	kv
12	3500	1/2" NPT	1/8" NPT	2012	3,55	53,03

Pneumatic valve with self-locking manual reset



Minimum piloting pressure 3 bar
Fluid:
Filtered air. No lubrication needed, if applied it shall be continuous.
Inert Gas.
Sweet gas (natural).



Ordering code
SS1232C1114

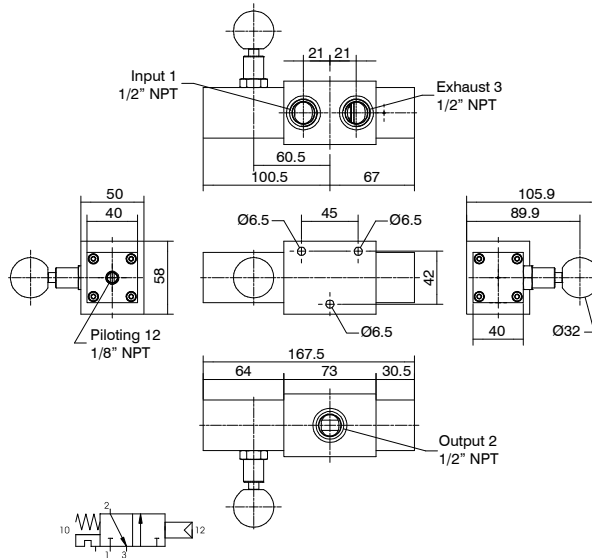
TYPE
L = Low temperature version
H = High temperature version

Operational characteristics

Maximum working pressure (bar)	Flow rate at 6 bar with $\Delta p=1$ (Nl/min)	Connections	Pilot connections	Weight (gr.)	Cv	kv
12	3500	1/2" NPT	1/8" NPT	2409	3,55	53,03



Pneumatic valve with self-locking manual reset inverted



Ordering code

SS1232C1115^T

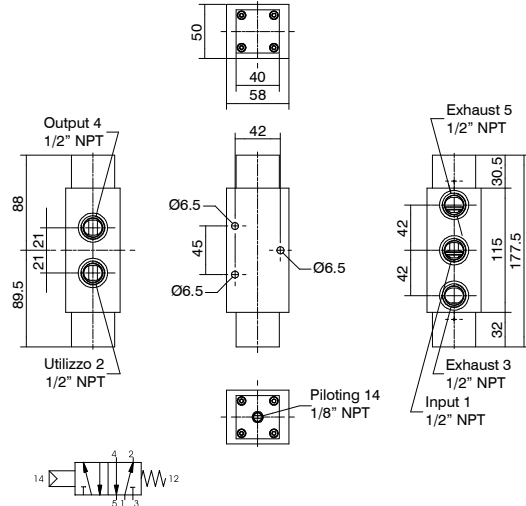
TYPE

^T L = Low temperature version
H = High temperature version

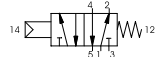
Minimum piloting pressure 3 bar
Fluid:
Filtered air. No lubrication needed, if applied it shall be continuous.
Inert Gas.
Sweet gas (natural).

Operational characteristics						
Maximum working pressure (bar)	Flow rate at 6 bar with $\Delta p=1$ (NL/min)	Connections	Pilot connections	Weight (gr.)	Cv	kv
12	3500	1/2" NPT	1/8" NPT	2408	3,55	53,03

Pneumatic-spring valve



Minimum piloting pressure 3 bar
Fluid: Filtered air. No lubrication needed, if applied it shall be continuous.
Inert Gas.
Sweet gas (natural).



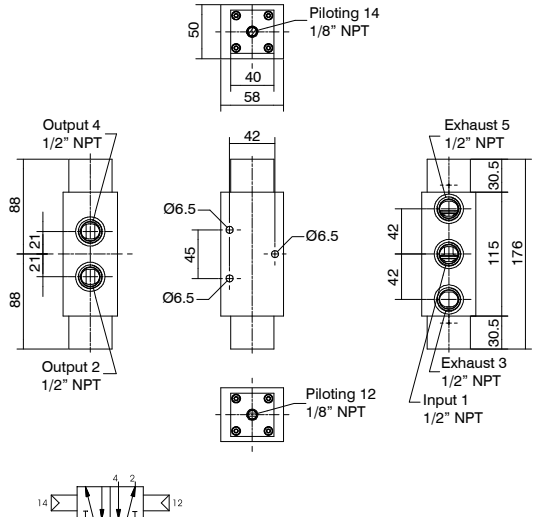
Operational characteristics

Maximum working pressure (bar)	Flow rate at 6 bar with $\Delta p=1$ (Nl/min)	Connections	Weight (gr.)	Cv	kv
12	3500	1/2" NPT	2744	3,55	53,03

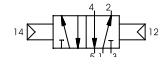
Ordering code
SS125201101T

TYPE
T L = Low temperature version
H = High temperature version

Pneumatic-pneumatic valve



Minimum piloting pressure 3 bar
Fluid: Filtered air. No lubrication needed, if applied it shall be continuous.
Inert Gas.
Sweet gas (natural).



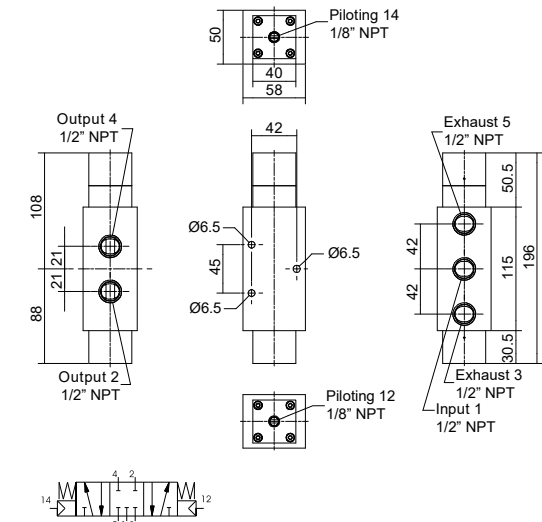
Operational characteristics

Maximum working pressure (bar)	Flow rate at 6 bar with $\Delta p=1$ (Nl/min)	Connections	Pilot connections	Weight (gr.)	Cv	kv
12	3500	1/2" NPT	1/8" NPT	2790	3,55	53,03

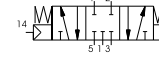
Ordering code
SS125201111T

TYPE
T L = Low temperature version
H = High temperature version

Pneumatic-pneumatic closed centers valve



Minimum piloting pressure 3 bar
Fluid: Filtered air. No lubrication needed, if applied it shall be continuous.
Inert Gas.
Sweet gas (natural).



Operational characteristics

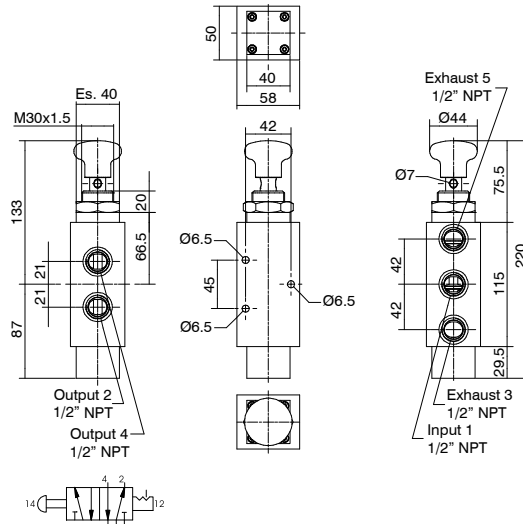
Maximum working pressure (bar)	Flow rate at 6 bar with $\Delta p=1$ (Nl/min)	Connections	Pilot connections	Weight (gr.)	Cv	kv
12	3500	1/2" NPT	1/8" NPT	3019	3,55	53,03

Ordering code
SS125311111T

TYPE
T L = Low temperature version
H = High temperature version



2 position push-pull valve



Ordering code
SS125200802

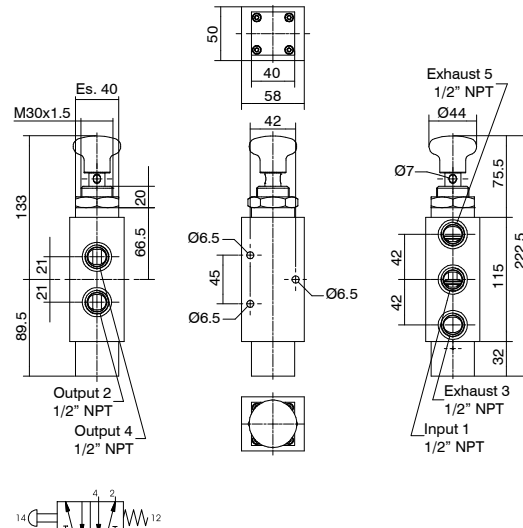
TYPE
L = Low temperature version
H = High temperature version

Ex
EAC Ex

Actuation force 55N.
Fluid: Filtered air. No lubrication needed, if applied it shall be continuous.
Inert Gas.
Sweet gas (natural).

Operational characteristics					
Maximum working pressure (bar)	Flow rate at 6 bar with $\Delta p=1$ (NI/min)	Connections	Weight (gr.)	Cv	kv
12	3500	1/2" NPT	2757	3,55	53,03

Push button-spring valve



Ordering code
SS125200801

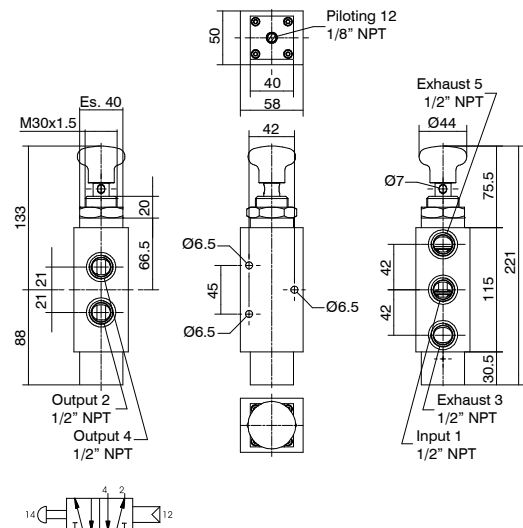
TYPE
L = Low temperature version
H = High temperature version

Ex
EAC Ex

Actuation force 200N
Fluid: Filtered air. No lubrication needed, if applied it shall be continuous.
Inert Gas.
Sweet gas (natural).

Operational characteristics					
Maximum working pressure (bar)	Flow rate at 6 bar with $\Delta p=1$ (NI/min)	Connections	Weight (gr.)	Cv	kv
12	3500	1/2" NPT	2730	3,55	53,03

Push button-pneumatic return valve



Ordering code
SS125200811

TYPE
L = Low temperature version
H = High temperature version

Ex
EAC Ex

Minimum piloting pressure 3 bar
Fluid: Filtered air. No lubrication needed, if applied it shall be continuous.
Inert Gas.
Sweet gas (natural).

Operational characteristics						
Maximum working pressure (bar)	Flow rate at 6 bar with $\Delta p=1$ (NI/min)	Connections	Pilot connections	Weight (gr.)	Cv	kv
12	3500	1/2" NPT	1/8" NPT	2780	3,55	53,03