



Solenoid valves 1/2" NPT series Steel line - For safe area with IP66 stainless steel housing

Stainless steel solenoid valves, complete with IP66 rated solenoid coil in a stainless steel housing and **CE** marked have been engineered and developed to meet process automation and Oil & Gas severe service requirements, where material performances, product reliability and health and safety issues are critical elements. As a result, Pneumax products are perfectly suitable to work with sweet gas media and corrosive / aggressive gases.

All external and internal parts are AISI316L stainless steel material in compliance with NACE standard MR0175/ISO 15156-1.

The range includes solenoid valves with 3 and 5 ways functions, complete with self feeding solenoids, designed according to the following configuration:

- Solenoid-spring valve
- Solenoid-solenoid valve
- Solenoid valve with self-locking manual reset (**only in a 3 way function**).
- Solenoid valve with self-locking manual reset inverted (**only in a 3 way function**).

Pneumax solenoid valves have 1/2" NPT connections with 3500NI/min maximum flow rate.

Construction characteristics

Body	AISI 316L stainless steel
Operators	AISI 316L stainless steel
Spool	AISI 316L stainless steel
Spring	AISI 316 stainless steel
Screws	AISI 316 stainless steel (A4-70 stainless steel)
Seals	NBR for low temperatures FPM (Fluoroelastomer) (available on request)

Operating range

Fluid	Filtered air. No lubrication needed, if applied it shall be continuous. Inert Gas. Sweet gas (natural).
Operating temperature	-20°C ... +70°C
Note: The suitable operating temperature is limited by the most restrictive component, which is the pilot, regardless of the type of seals used in the valve spool.	
Maximum operating pressure	10 bar

Electrical (Electropilot) construction characteristics

Housing	304 stainless steel with epoxy paint
Armour / Cores	Ferromagnetic stainless steel
Springs	Stainless steel
Seals	FPM (Fluoroelastomer)
Incorporation	PTB 30% glass load
Wire insulation	H
Nominal voltage	24 V DC 24, 110, 220 V AC
Power consumption DC	2,4W
Power consumption AC	10VA (Inrush), 5VA (Running)
Connection for cable entry	M20x1.5 (1/2" NPT available on request)
Electrical connection	Screw terminals 2 Poles 2.5 mm
IP Rating	IP66
Tolerance on voltage supply	±10%
ED continuous service	100%

Certifications available:

Non ATEX marked product

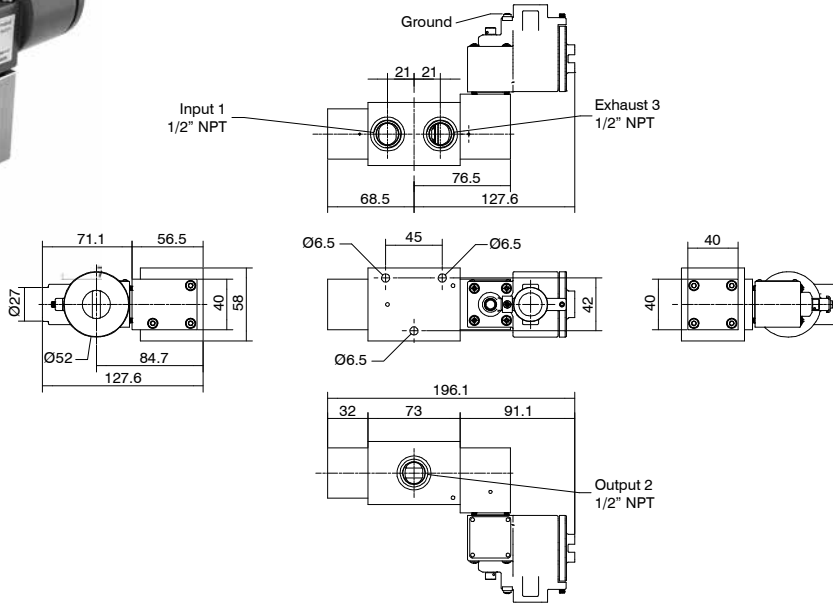


: Suitable up to SIL 3





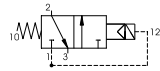
Solenoid-spring valve



Ordering code
SS1232CA01L

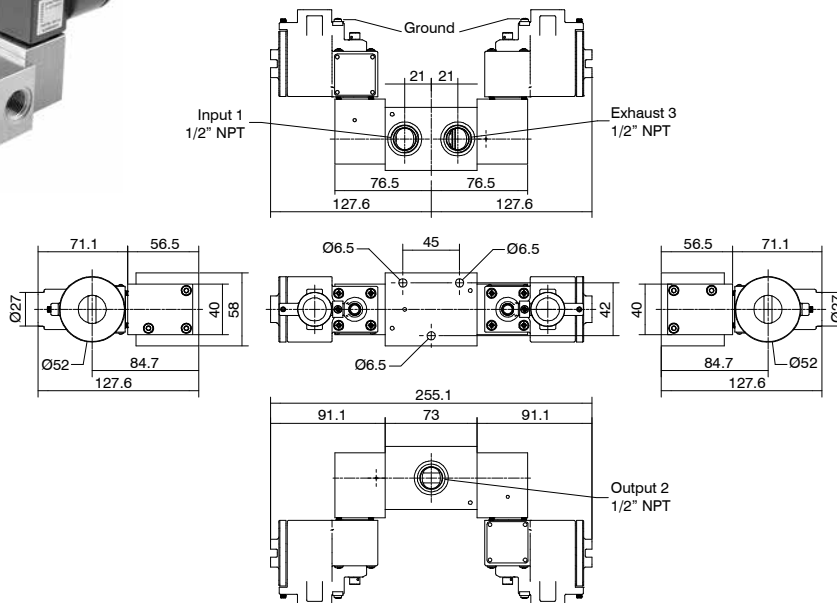
TENSION
1 = 24 V DC
2 = 24 V AC (50/60 Hz)
3 = 110 V AC (50/60 Hz)
4 = 220 V AC (50/60 Hz)

Minimum piloting pressure 3 bar
Fluid:
Filtered air. No lubrication needed, if applied it shall be continuous.
Inert Gas.
Sweet gas (natural).



Operational characteristics					
Maximum working pressure (bar)	Flow rate at 6 bar with $\Delta p=1$ (NI/min)	Connections	Weight (gr.)	Cv	kv
10	3500	1/2" NPT	2776	3,55	53,03

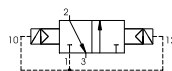
Solenoid-solenoid valve



Ordering code
SS1232CA0A0L

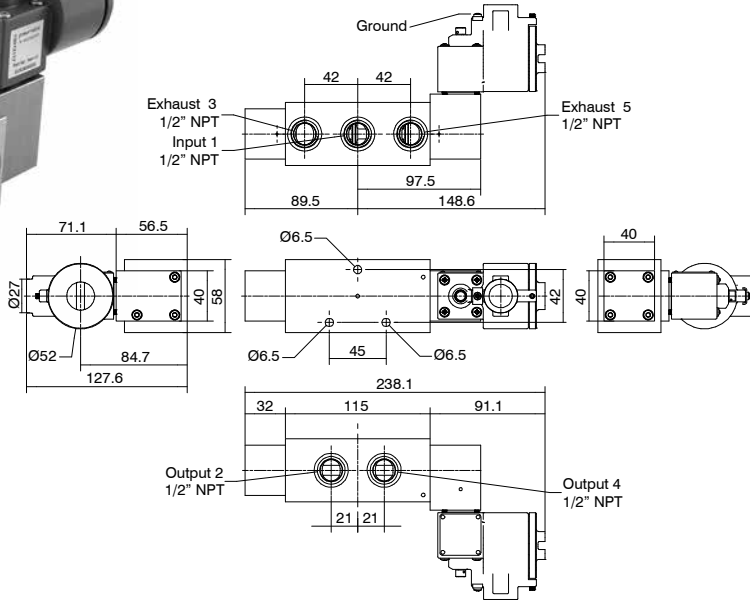
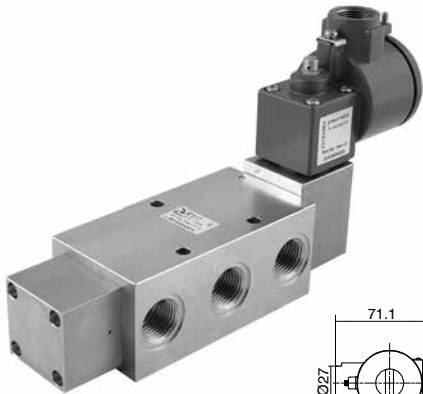
TENSION
1 = 24 V DC
2 = 24 V AC (50/60 Hz)
3 = 110 V AC (50/60 Hz)
4 = 220 V AC (50/60 Hz)

Minimum piloting pressure 3 bar
Fluid:
Filtered air. No lubrication needed, if applied it shall be continuous.
Inert Gas.
Sweet gas (natural).

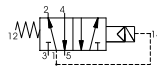


Operational characteristics					
Maximum working pressure (bar)	Flow rate at 6 bar with $\Delta p=1$ (NI/min)	Connections	Weight (gr.)	Cv	kv
10	3500	1/2" NPT	3909	3,55	53,03

Solenoid-spring valve



Minimum piloting pressure 3 bar
Fluid:
Filtered air. No lubrication needed, if applied it shall be continuous.
Inert Gas.
Sweet gas (natural).



Operational characteristics

Maximum working pressure (bar)	Flow rate at 6 bar with $\Delta p=1$ (Nl/min)	Connections	Weight (gr.)	Cv	kv
10	3500	1/2" NPT	3679	3,55	53,03

Ordering code

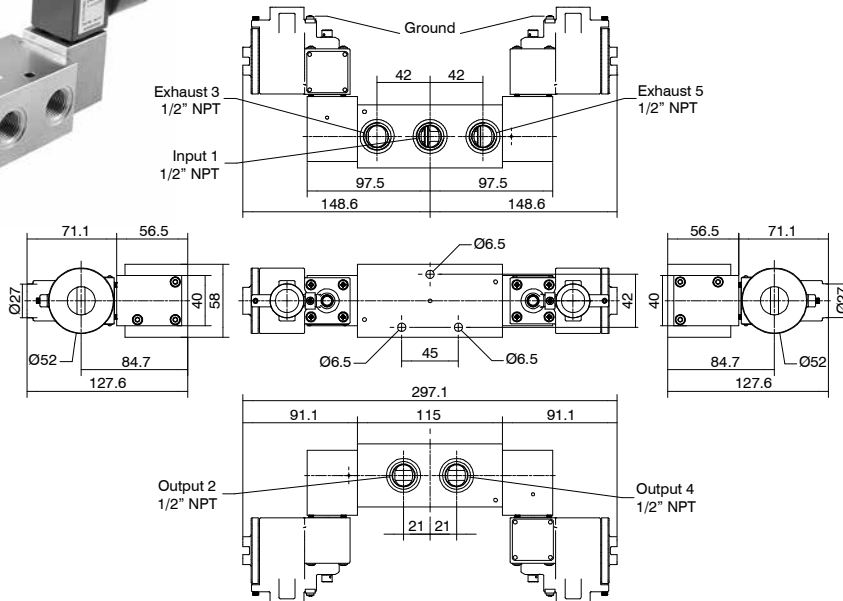
SS12520A**1**01L

TENSION

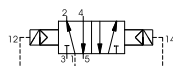
- 1 = 24 V DC
- 2** = 24 V AC (50/60 Hz)
- 3 = 110 V AC (50/60 Hz)
- 4 = 220 V AC (50/60 Hz)



Solenoid-solenoid valve



Minimum piloting pressure 3 bar
Fluid:
Filtered air. No lubrication needed, if applied it shall be continuous.
Inert Gas.
Sweet gas (natural).



Operational characteristics

Maximum working pressure (bar)	Flow rate at 6 bar with $\Delta p=1$ (Nl/min)	Connections	Weight (gr.)	Cv	kv
10	3500	1/2" NPT	4678	3,55	53,03

Ordering code

SS12520A**1**0**1**0**1**L

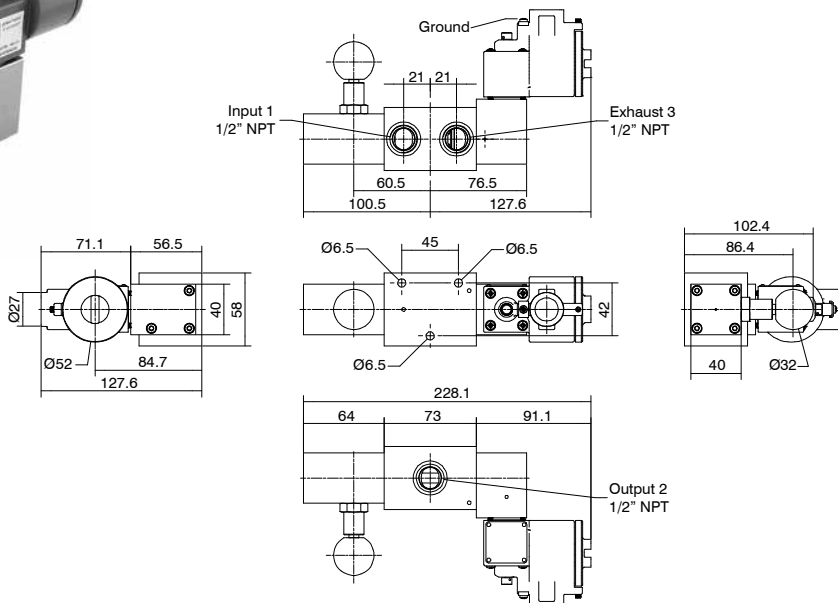
TENSION

- 1 = 24 V DC
- 2** = 24 V AC (50/60 Hz)
- 3 = 110 V AC (50/60 Hz)
- 4 = 220 V AC (50/60 Hz)

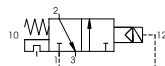




Solenoid valve with self-locking manual reset



Minimum piloting pressure 3 bar
Fluid:
Filtered air. No lubrication needed, if applied it shall be continuous.
Inert Gas.
Sweet gas (natural).



Operational characteristics

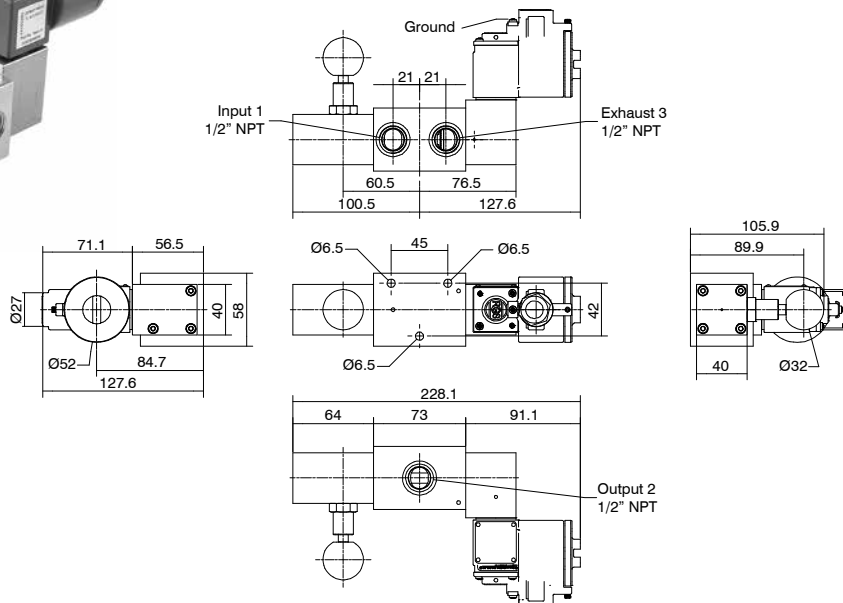
Maximum working pressure (bar)	Flow rate at 6 bar with $\Delta p=1$ (NI/min)	Connections	Weight (gr.)	Cv	kv
10	3500	1/2" NPT	3358	3,55	53,03

Ordering code
SS1232CA14L

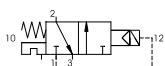
TENSION
1 = 24 V DC
2 = 24 V AC (50/60 Hz)
3 = 110 V AC (50/60 Hz)
4 = 220 V AC (50/60 Hz)

PROCESS AUTOMATION TECHNOLOGY

Solenoid valve with self-locking manual reset inverted



Minimum piloting pressure 3 bar
Fluid:
Filtered air. No lubrication needed, if applied it shall be continuous.
Inert Gas.
Sweet gas (natural).



Operational characteristics

Maximum working pressure (bar)	Flow rate at 6 bar with $\Delta p=1$ (NI/min)	Connections	Weight (gr.)	Cv	kv
10	3500	1/2" NPT	3360	3,55	53,03

Ordering code
SS1232CA15L

TENSION
1 = 24 V DC
2 = 24 V AC (50/60 Hz)
3 = 110 V AC (50/60 Hz)
4 = 220 V AC (50/60 Hz)

Solenoid valves 1/2" NPT series Steel line - IP66 Exd Explosion protection

Stainless steel solenoid valves, complete with IP66 Exd Explosion protection rated solenoid coil in a stainless steel housing andz **CE** marked have been engineered and developed to meet process automation and Oil & Gas severe service requirements, where material performances, product reliability and health and safety issues are critical elements. As a result, Pneumax products are perfectly suitable to work with sweet gas media and corrosive / aggressive gases.

All external and internal parts are AISI316L stainless steel material in compliance with NACE standard MR0175/ISO 15156-1.

The range includes solenoid valves with 3 and 5 ways functions, complete with self feeding solenoids, designed according to the following configuration:

- Solenoid-spring valve
- Solenoid-solenoid valve
- Solenoid valve with self-locking manual reset **(only in a 3 way function)**.
- Solenoid valve with self-locking manual reset inverted **(only in a 3 way function)**.

Pneumax solenoid valves have 1/2" NPT connections with 3500NI/min maximum flow rate.

This version only provides single mounting.

Construction characteristics

Body	AISI 316L stainless steel
Operators	AISI 316L stainless steel
Spool	AISI 316L stainless steel
Spring	AISI 316 stainless steel
Screws	AISI 316 stainless steel (A4-70 stainless steel)
Seals	NBR for low temperatures FPM (Fluoroelastomer) (available on request)

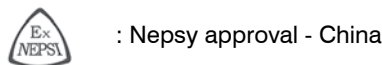
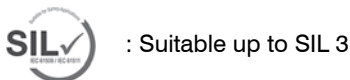
Operating range

Fluid	Filtered air. No lubrication needed, if applied it shall be continuous. Inert Gas. Sweet gas (natural).
Operating temperature for DC version	-50°C ... +70°C
Operating temperature for AC version	-50°C ... +55°C
Maximum operating pressure	10 bar

Electrical (Electropilot) construction characteristics

Housing	304 stainless steel with epoxy paint
Armour / Cores	Ferromagnetic stainless steel
Springs	Stainless steel
Seals	FPM (Fluoroelastomer)
Incorporation	PTB 30% glass load
Wire insulation	H
Nominal voltage	24 V DC 24, 110, 220/230 V AC
Power consumption DC	3W
Power consumption AC	10VA (Inrush), 5VA (Running)
Connection for cable entry	M20x1.5 (1/2" NPT) available on request
Electrical connection	Screw terminals 2 Poles 2.5 mm
IP Rating	IP66
Tolerance on voltage supply	±10%
ED continuous service	100%

Certifications available:

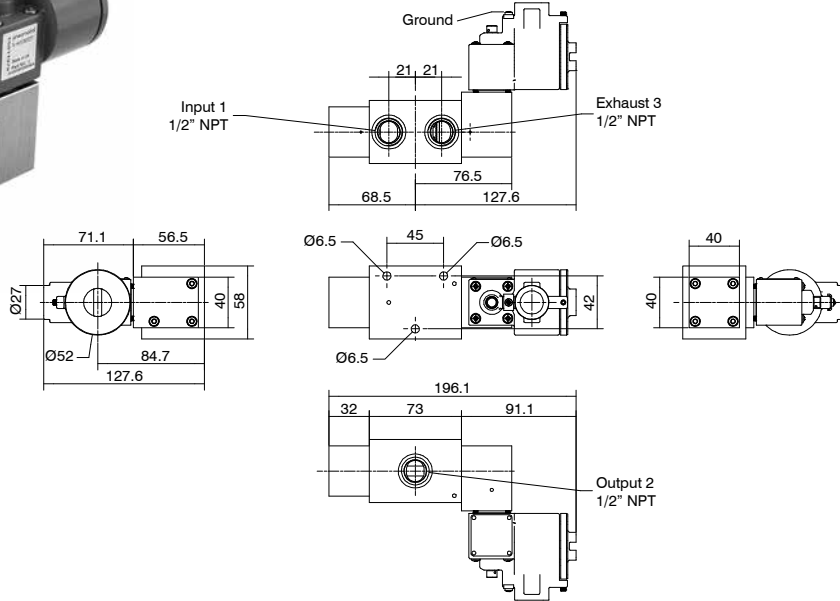


ATEX, SIL and EAC Ex: refer to products in the various sections to the catalogues.

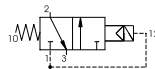
IECEx and NEPSI: refer to Pneumatrol pilots installed upon each valve.



Solenoid-spring valve



Minimum piloting pressure 3 bar
Fluid:
Filtered air. No lubrication needed, if applied it shall be continuous.
Inert Gas.
Sweet gas (natural).



Operational characteristics

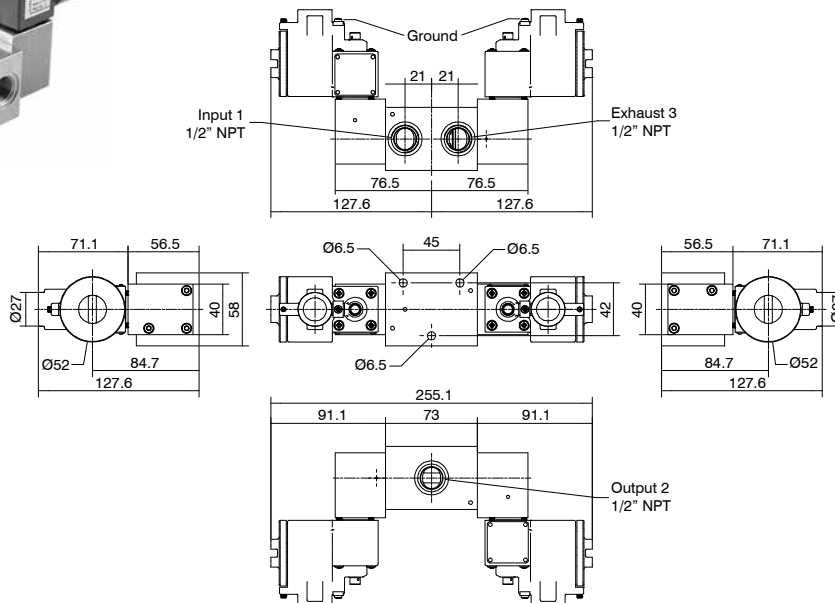
Maximum working pressure (bar)	Flow rate at 6 bar with $\Delta p=1$ (NI/min)	Connections	Weight (gr.)	Cv	kv
10	3500	1/2" NPT	2776	3,55	53,03

Ordering code
SS1232CB01L

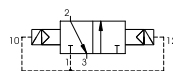
TENSION
1 = 24 V DC
2 = 24 V AC (50/60 Hz)
3 = 110 V AC (50/60 Hz)
4 = 220 V AC (50/60 Hz)

PROCESS AUTOMATION TECHNOLOGY

Solenoid-solenoid valve



Minimum piloting pressure 3 bar
Fluid:
Filtered air. No lubrication needed, if applied it shall be continuous.
Inert Gas.
Sweet gas (natural).



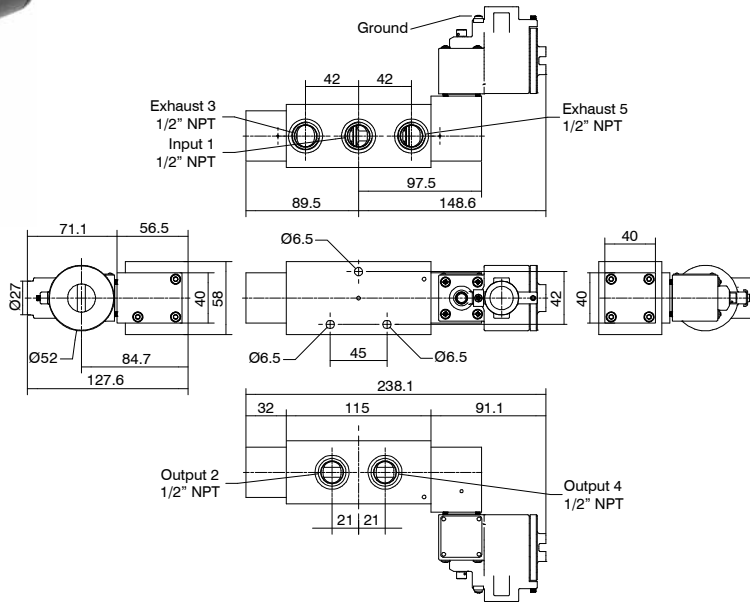
Operational characteristics

Maximum working pressure (bar)	Flow rate at 6 bar with $\Delta p=1$ (NI/min)	Connections	Weight (gr.)	Cv	kv
10	3500	1/2" NPT	3909	3,55	53,03

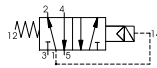
Ordering code
SS1232CB01L

TENSION
1 = 24 V DC
2 = 24 V AC (50/60 Hz)
3 = 110 V AC (50/60 Hz)
4 = 220 V AC (50/60 Hz)

Solenoid-spring valve



Minimum piloting pressure 3 bar
Fluid:
Filtered air. No lubrication needed, if applied it shall be continuous.
Inert Gas.
Sweet gas (natural).



Operational characteristics

Maximum working pressure (bar)	Flow rate at 6 bar with $\Delta p=1$ (l/min)	Connections	Weight (gr.)	Cv	kv
10	3500	1/2" NPT	3679	3,55	53,03

Ordering code

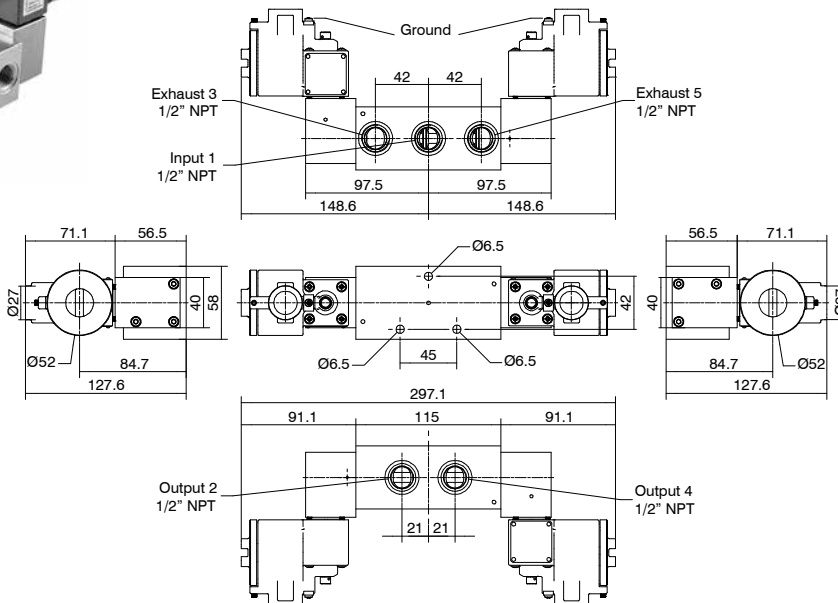
SS12520B**T**01L

TENSION

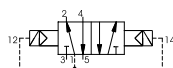
- 1 = 24 V DC
- 2 = 24 V AC (50/60 Hz)
- 3 = 110 V AC (50/60 Hz)
- 4 = 220 V AC (50/60 Hz)



Solenoid-solenoid valve



Minimum piloting pressure 3 bar
Fluid:
Filtered air. No lubrication needed, if applied it shall be continuous.
Inert Gas.
Sweet gas (natural).



Operational characteristics

Maximum working pressure (bar)	Flow rate at 6 bar with $\Delta p=1$ (l/min)	Connections	Weight (gr.)	Cv	kv
10	3500	1/2" NPT	4678	3,55	53,03

Ordering code

SS12520B**T**01L

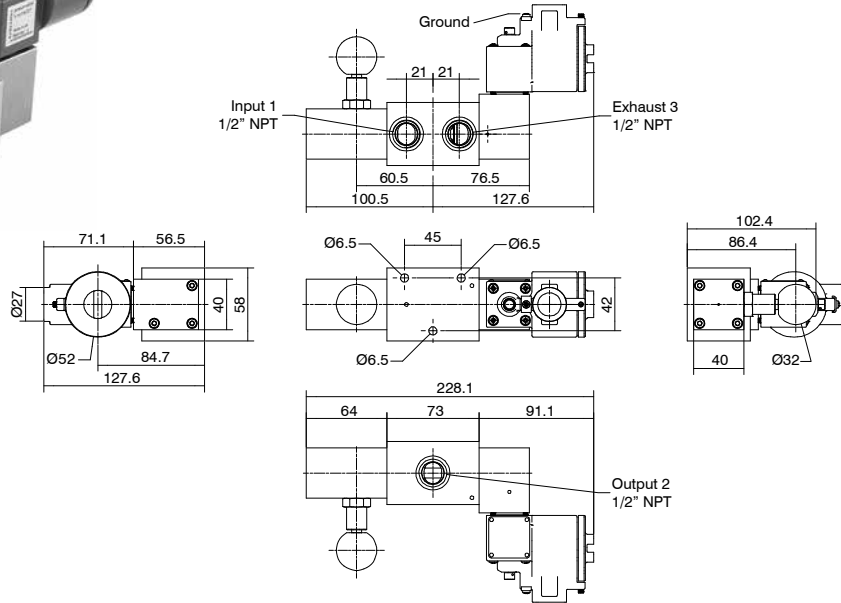
TENSION

- 1 = 24 V DC
- 2 = 24 V AC (50/60 Hz)
- 3 = 110 V AC (50/60 Hz)
- 4 = 220 V AC (50/60 Hz)





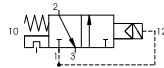
Solenoid valve with self-locking manual reset



Ordering code
SS1232CB^T14L

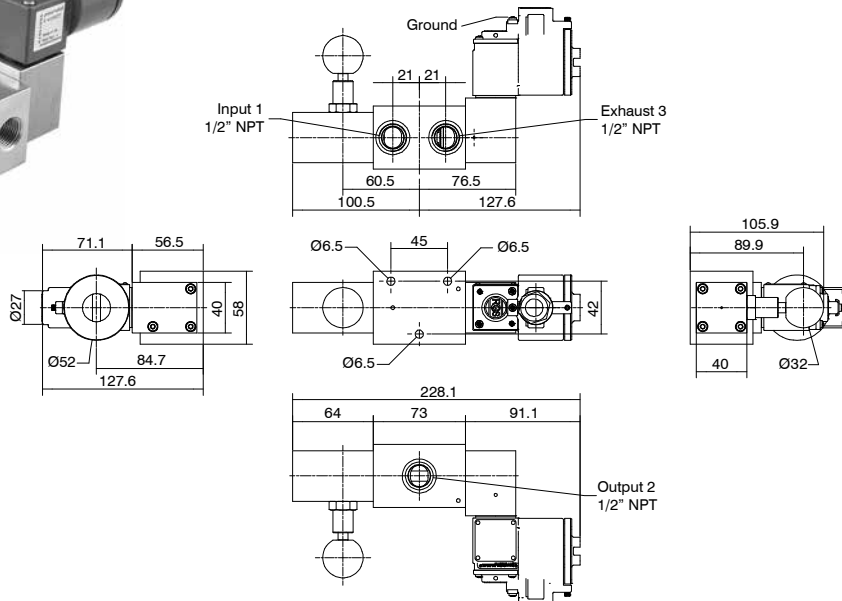
TENSION
1 = 24 V DC
T 2 = 24 V AC (50/60 Hz)
3 = 110 V AC (50/60 Hz)
4 = 220 V AC (50/60 Hz)

Minimum piloting pressure 3 bar
Fluid:
Filtered air. No lubrication needed, if applied it shall be continuous.
Inert Gas.
Sweet gas (natural).



Operational characteristics					
Maximum working pressure (bar)	Flow rate at 6 bar with $\Delta p=1$ (NI/min)	Connections	Weight (gr.)	Cv	kv
10	3500	1/2" NPT	3358	3,55	53,03

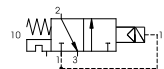
Solenoid valve with self-locking manual reset inverted



Ordering code
SS1232CB^T15L

TENSION
1 = 24 V DC
T 2 = 24 V AC (50/60 Hz)
3 = 110 V AC (50/60 Hz)
4 = 220 V AC (50/60 Hz)

Minimum piloting pressure 3 bar
Fluid:
Filtered air. No lubrication needed, if applied it shall be continuous.
Inert Gas.
Sweet gas (natural).



Operational characteristics					
Maximum working pressure (bar)	Flow rate at 6 bar with $\Delta p=1$ (NI/min)	Connections	Weight (gr.)	Cv	kv
10	3500	1/2" NPT	3360	3,55	53,03

Solenoid valves 1/2" NPT series Steel line - Intrinsically safe Exia

Stainless steel solenoid valves, complete with intrinsically safe Exia rated solenoid coil in and **CE** marked have been engineered and developed to meet process automation and Oil & Gas severe service requirements, where material performances, product reliability and health and safety issues are critical elements. As a result, Pneumax products are perfectly suitable to work with sweet gas media and corrosive / aggressive gases.

All external and internal parts are AISI316L stainless steel material in compliance with NACE standard MR0175/ISO 15156-1.

The range includes solenoid valves with 3 and 5 ways functions, complete with self feeding solenoids, designed according to the following configuration:

- Solenoid-spring valve
- Solenoid-solenoid valve
- Solenoid valve with self-locking manual reset
- Solenoid valve with self-locking manual reset inverted.

Pneumax solenoid valves have 1/2" NPT connections with 3500NI/min maximum flow rate.

This version only provides single mounting.

Construction characteristics

Body	AISI 316L stainless steel
Operators	AISI 316L stainless steel
Spool	AISI 316L stainless steel
Spring	AISI 316 stainless steel
Screws	AISI 316 stainless steel (A4-70 stainless steel)
Seals	NBR for low temperatures FPM (Fluoroelastomer) (available on request)

Operating range

Fluid	Filtered air. No lubrication needed, if applied it shall be continuous. Inert Gas. Sweet gas (natural).
Operating temperature	-40°C ... +65°C

Note: The suitable operating temperature is limited by the most restrictive component, which is the pilot, regardless of the type of seals used in the valve spool.

Maximum operating pressure	10 bar
----------------------------	--------

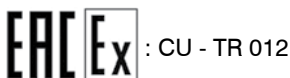
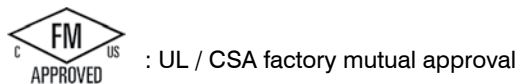
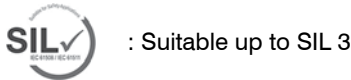
Electrical (Electropilot) construction characteristics

Housing	Zinc alloy with epoxy paint
Armour / Cores	Ferromagnetic stainless steel
Springs	Stainless steel
Seals	FPM (Fluoroelastomer)
Incorporation	PTB 30% glass load
Wire insulation	H
Guide tube	Stainless steel
Resistance	370 Ohms
Nominal voltage	24 V DC
Power consumption DC	0,4 W (Running)
Connection for cable entry	M20x1.5
Electrical connection	Screw terminals 2 Poles 2.5 mm
IP Rating	IP66
Tolerance on voltage supply	±10%
ED continuous service	100%

Electrical specifications for intrinsically safe

U _{max} : in	31 V DC
I _{max} :	0,67 A
W _{max} : in	2,98 W

Certifications available:

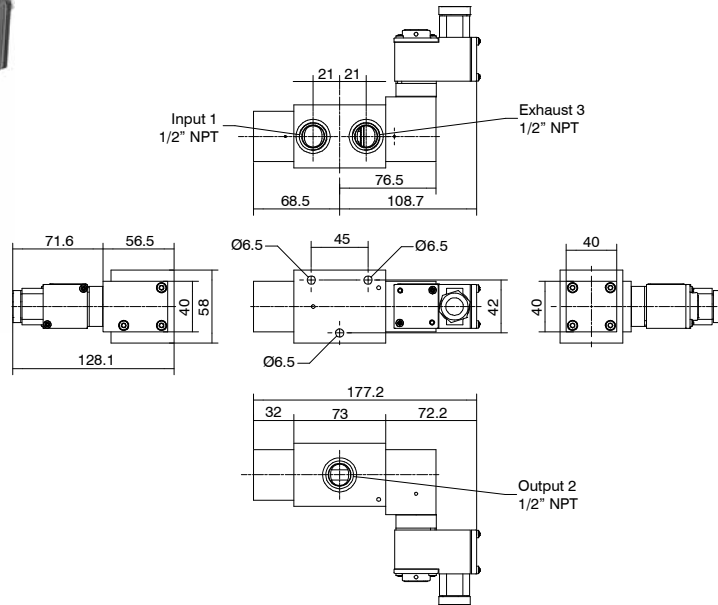


ATEX, SIL and EAC Ex: refer to products in the various sections to the catalogues.

IECEx and FM: refer to Pneumatrol pilots installed upon each valve.



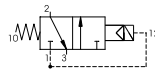
Solenoid-spring valve



Ordering code
SS1232CC001L

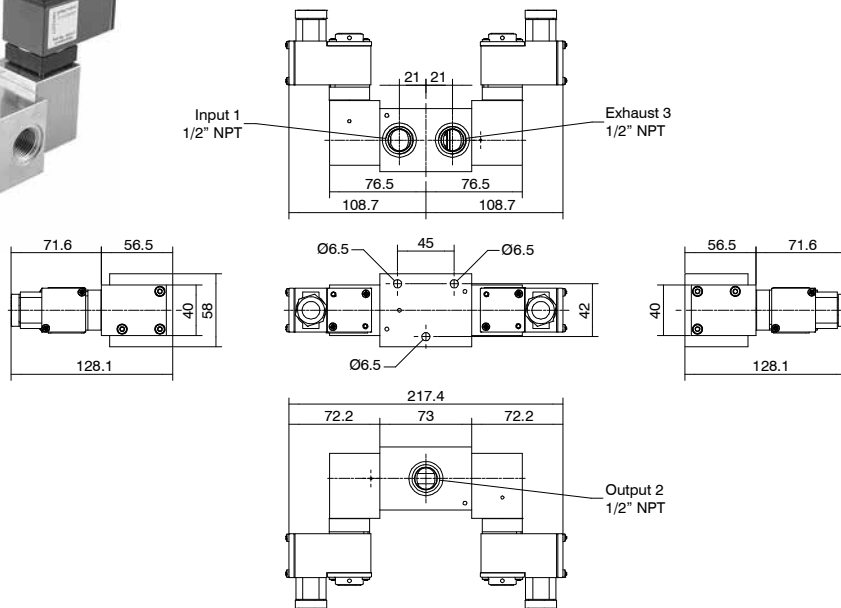
TENSION
1 = 24 V DC 33 mA

Minimum piloting pressure 3 bar
Fluid:
Filtered air. No lubrication needed, if applied it shall be continuous.
Inert Gas.
Sweet gas (natural).



Operational characteristics					
Maximum working pressure (bar)	Flow rate at 6 bar with $\Delta p=1$ (NI/min)	Connections	Weight (gr.)	Cv	kv
10	3500	1/2" NPT	2437	3,55	53,03

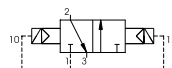
Solenoid-solenoid valve



Ordering code
SS1232CC001L

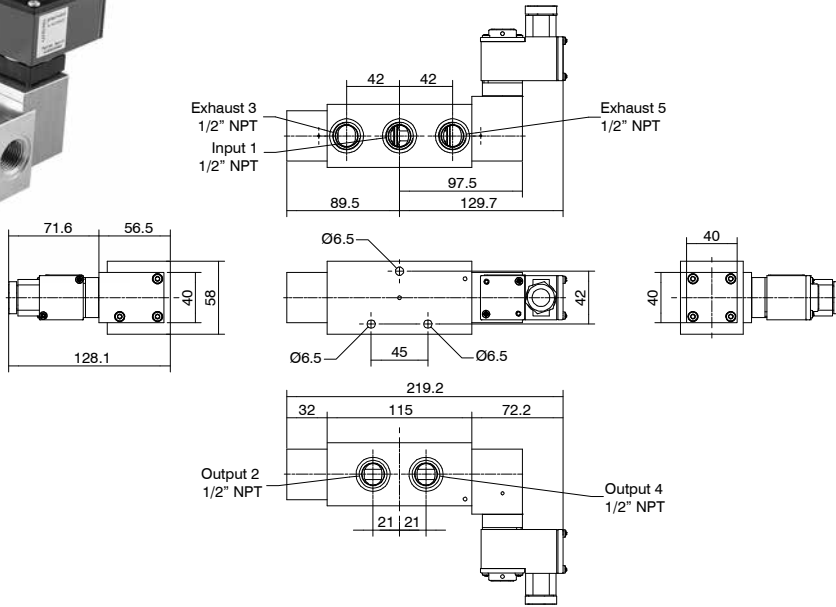
TENSION
1 = 24 V DC 33 mA

Minimum piloting pressure 3 bar
Fluid:
Filtered air. No lubrication needed, if applied it shall be continuous.
Inert Gas.
Sweet gas (natural).



Operational characteristics					
Maximum working pressure (bar)	Flow rate at 6 bar with $\Delta p=1$ (NI/min)	Connections	Weight (gr.)	Cv	kv
10	3500	1/2" NPT	3228	3,55	53,03

Solenoid-spring valve



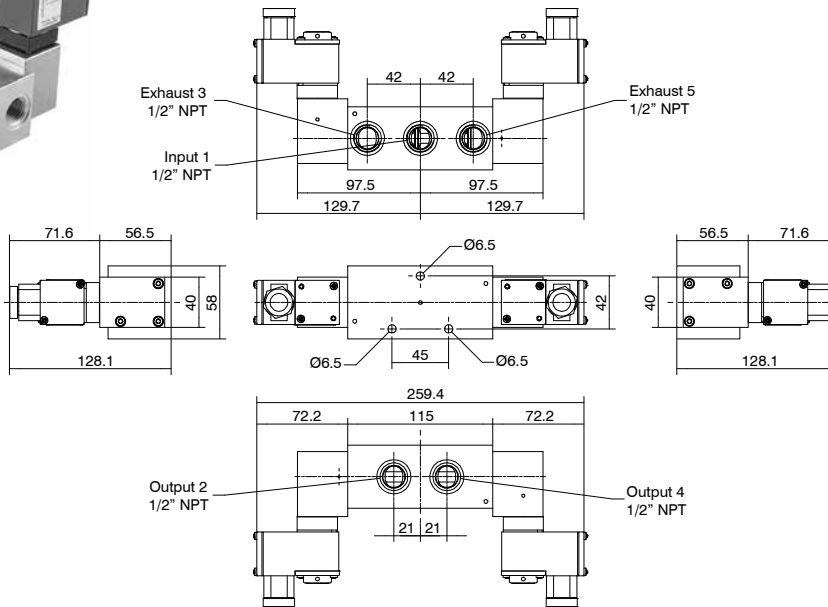
Minimum piloting pressure 3 bar
Fluid:
Filtered air. No lubrication needed, if applied it shall be continuous.
Inert Gas.
Sweet gas (natural).



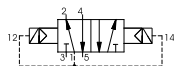
Operational characteristics

Maximum working pressure (bar)	Flow rate at 6 bar with $\Delta p=1$ (Nl/min)	Connections	Weight (gr.)	Cv	kv
10	3500	1/2" NPT	3349	3,55	53,03

Solenoid-solenoid valve



Minimum piloting pressure 3 bar
Fluid:
Filtered air. No lubrication needed, if applied it shall be continuous.
Inert Gas.
Sweet gas (natural).



Operational characteristics

Maximum working pressure (bar)	Flow rate at 6 bar with $\Delta p=1$ (Nl/min)	Connections	Weight (gr.)	Cv	kv
10	3500	1/2" NPT	3749	3,55	53,03

Ordering code

SS12520C01L

TENSION

1 = 24 V DC 33 mA



Ordering code

SS12520C01L

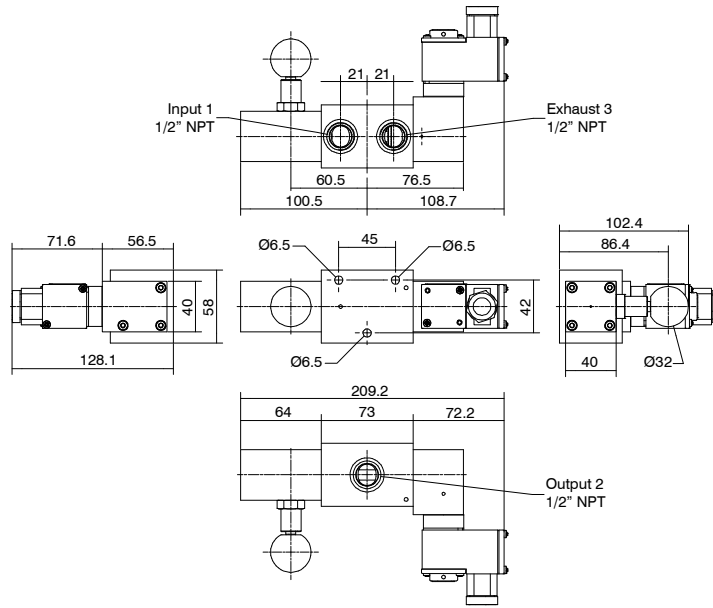
TENSION

1 = 24 V DC 33 mA





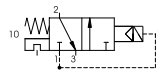
Solenoid valve with self-locking manual reset



Ordering code
SS1232CC014L

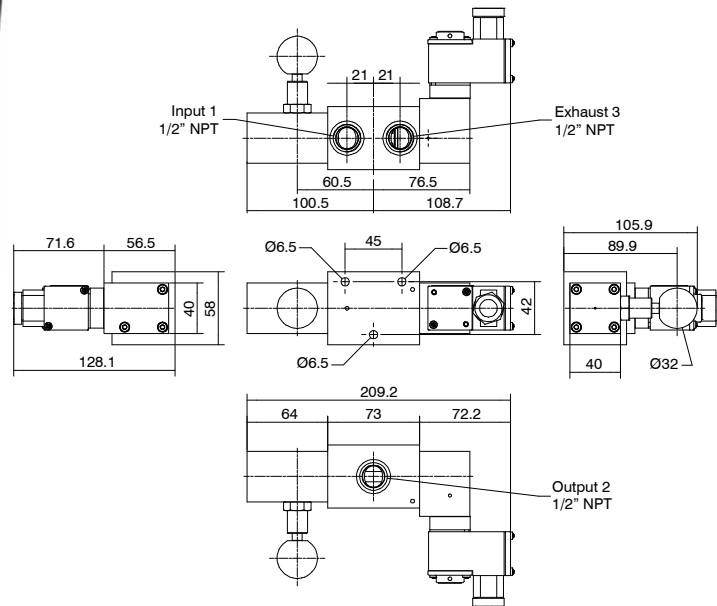
TENSION
1 = 24 V DC 33 mA

Minimum piloting pressure 3 bar
Fluid:
Filtered air. No lubrication needed, if applied it shall be continuous.
Inert Gas.
Sweet gas (natural).



Operational characteristics					
Maximum working pressure (bar)	Flow rate at 6 bar with $\Delta p=1$ (NI/min)	Connections	Weight (gr.)	Cv	kv
10	3500	1/2" NPT	3020	3,55	53,03

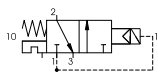
Solenoid valve with self-locking manual reset inverted



Ordering code
SS1232CC015L

TENSION
1 = 24 V DC 33 mA

Minimum piloting pressure 3 bar
Fluid:
Filtered air. No lubrication needed, if applied it shall be continuous.
Inert Gas.
Sweet gas (natural).



Operational characteristics					
Maximum working pressure (bar)	Flow rate at 6 bar with $\Delta p=1$ (NI/min)	Connections	Weight (gr.)	Cv	kv
10	3500	1/2" NPT	3015	3,55	53,03