

J-Series



Pneumatic gripper clamps

Technical features

Manual release button to open the linkage when air pressure is removed during setup. **Pneumatic ports on both sides** of the cylinder.

Operating features

Operating pressure	from 2 to 8 bar / from 30 to 115 psi
Lubrication	all the devices are lubricated for life at the factory. Inline air lubrication isn't required

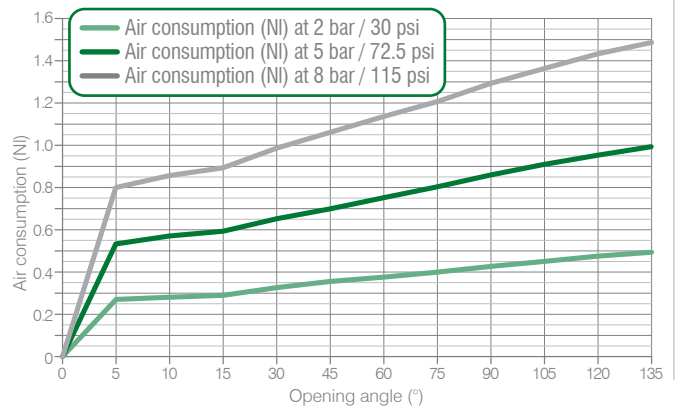
Functional charts

Size 40 mm

- **Cycle time for max opening angle**
< 0.8 s NO flow valve required
- **Clamping moment (at 5 bar / 72.5 psi)**
50 N m / 36,87 lb-ft
- **Holding moment**
75 N m / 55,31 lb-ft

The above data are meant for correct working conditions of the clamp with the same performance level during its life time. For applications which exceed the above data, please contact our sales representatives.

- **Air consumption / Complete cycle (opening and closing)**
REV. 00 - 17/06/2015



Ordering string

J-Series

J P 40 E G 1 2 A

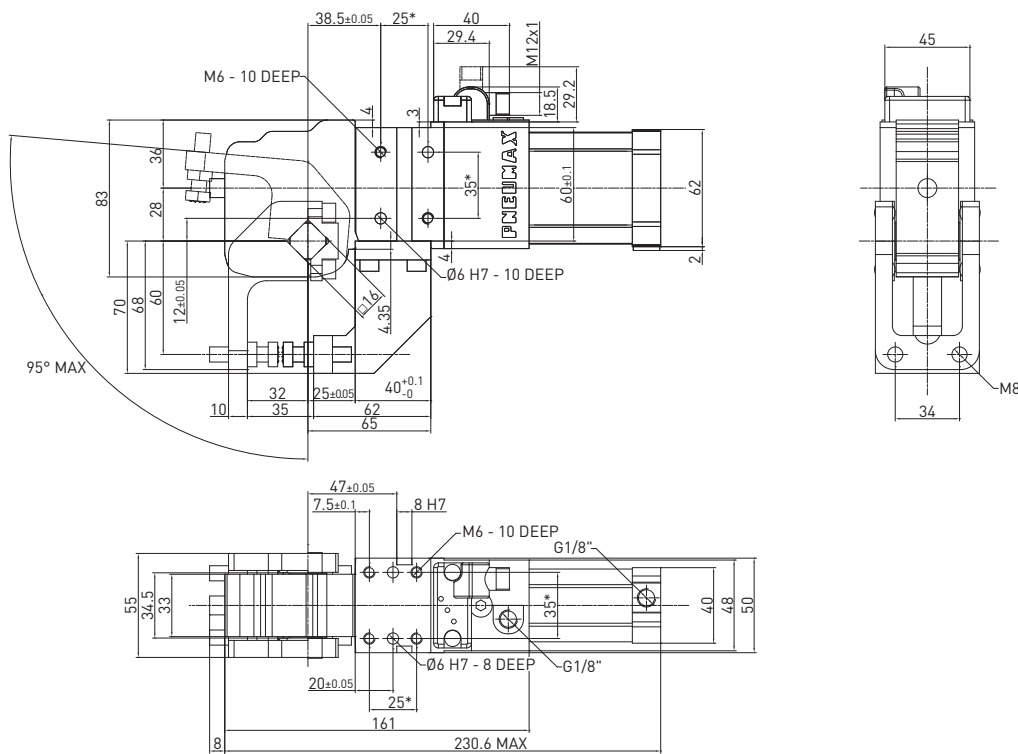
J	VERSION	J = Retractable locating pin package with dual rod
P	OPERATION	P = pneumatic D = pneumatic with manual operation
40	SIZE	40 = Ø 40 mm
E	SENSOR	E = electronic sensor with M12 swivel connector - PNP A = electronic sensor with M12 swivel connector - NPN N = no sensor B = electronic sensor with M8 swivel connector - PNP
G	PORTS	G = G thread – BSPP
1	ARM MOVEMENT	1 = upper jaw
2	CLAMP ARM TYPE	2 = 2 pairs of knurled tips (not included in the scope of the supply)
A	ARM MATERIAL	A = aluminum S = steel





JP40E / Gripper clamp - Size 40 mm

WEIGHT 1.9 kg



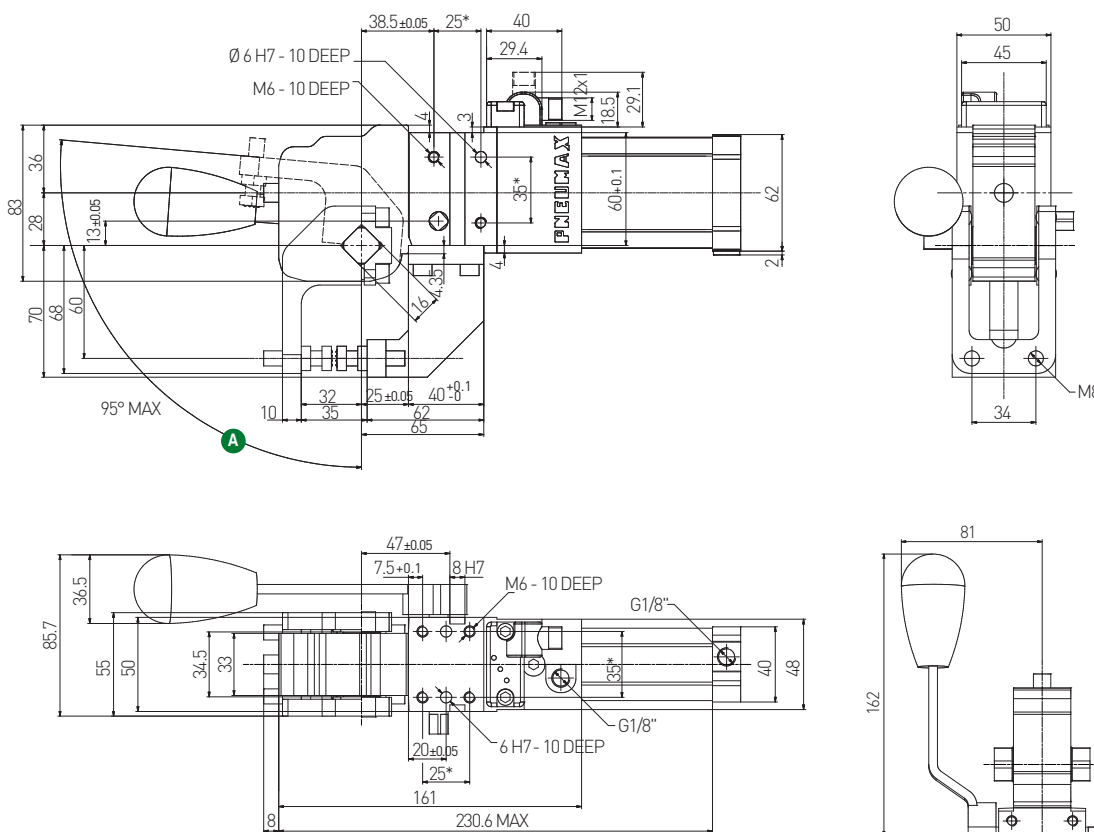
* DIMENSIONAL TOLERANCE FOR DOWEL HOLES: ±0.02
DIMENSIONAL TOLERANCE FOR THREADED HOLES: ±0.1

REV. 00 31/03/2015

HANDLING

JD_40E / Gripper clamp - Size 40 mm - Manual operation

WEIGHT 2.2 kg
D1 handle included



Handle swivel angle

Arm opening angle	Handle swivel angle A
0°	4.12°
15°	22.65°
30°	38.2°
45°	58.4°
60°	83.6°
75°	107.6°
90°	123.6°
105°	132.75°
120°	137.7°
135°	140°

D1 Version

D2 Version

* DIMENSIONAL TOLERANCE FOR DOWEL HOLES: ±0.02
DIMENSIONAL TOLERANCE FOR THREADED HOLES: ±0.1

REV. 00 - 17/06/2015

M5x16 screws
Tightening torque: 5 Nm / 3.68 Lb ft