

RT-Series



Retractable locating pin packages with toggle linkage

- Fully encapsulated toggle mechanism: in case of air loss, the working position remains secure
- Manual unlock mechanism to disengage the linkage in emergency situations
- Position repeatability ± 0.05 mm
- Clear design with user-friendly surfaces and no dirt or welding deposit traps

LOCATING

Technical features

Pneumatic ports on both sides of the cylinder.

Operating features

Operating pressure from 2 to 8 bar / from 30 to 115 psi

Lubrication all the devices are lubricated for life at the factory. Inline air lubrication isn't required

Functional charts

Size 40 mm

• Max deflection

40 mm	0.5	0.004	0.009	0.004
	1	0.009	0.02	0.009
	1.5	0.013	0.032	0.013
	2	0.018	0.047	0.018
	2.5	0.022	0.66	0.022
	3	0.026	0.075	0.026

• Functional data (at 5 bar / 72.5 psi)

Thrust force at end stroke	2700 N
----------------------------	--------

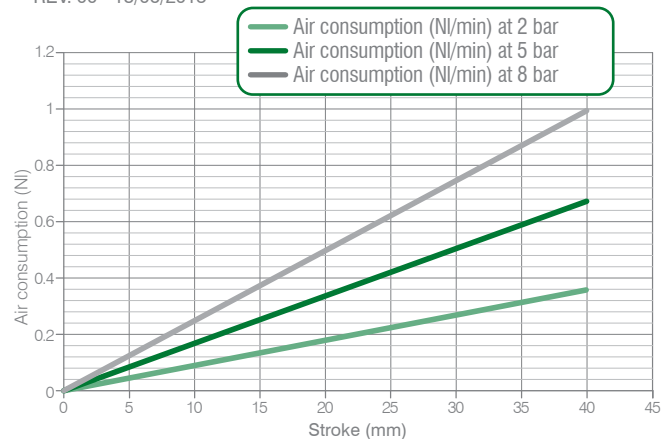
• Cycle time for max stroke

< 0.8 s NO flow valve required

• Air consumption

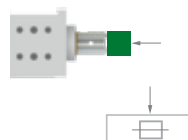
Air consumption for complete cycle

REV. 00 - 18/06/2015



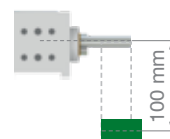
Load position **A**

Horizontal mounting position of the retractable locating pin/load centre on the rod



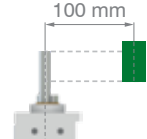
Load position **B**

Horizontal mounting position of the retractable locating pin/load centre at 100 mm from the rod axis



Load position **C**

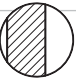
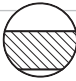

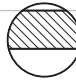
Vertical mounting position of the retractable locating pin/load centre at 100 mm from the rod axis

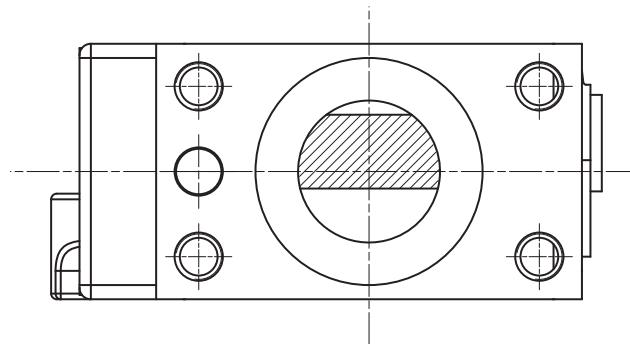


RT-Series / Ordering string

RT_40-series

R **T** **40** **E** **40** **G** **3** **1**

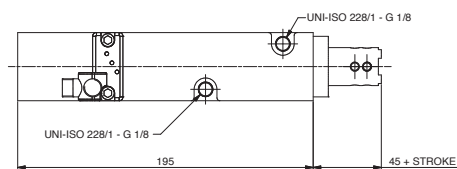
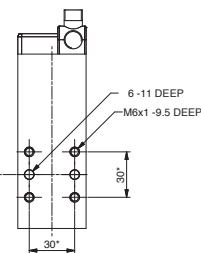
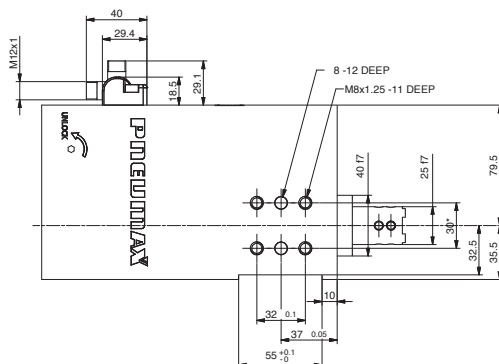
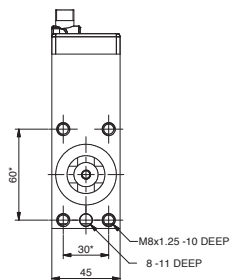
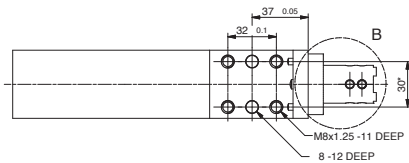
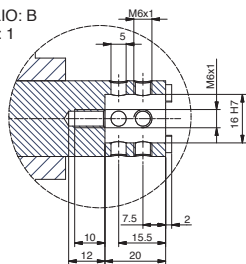
R	VERSION	R = retractable locating pin package with toggle lock
T	OPERATION	T = pneumatic with toggle lock TD = pneumatic with manual operation and toggle lock
40	SIZE	40 = Ø 40 mm
E	SENSOR	E = electronic sensor with M12 swivel connector -PNP
40	STROKE	40 = 40 mm
G	PORTS	G = G thread – BSPP
3	ROD TERMINATION	1 = iØ 16 mm cross-cut key rod termination 3 = rod termination for offset pins
1	ROD ORIENTATION (for termination type 3)	1 =  2 =  3 =  4 = 



RT40E40G1 / Retractable locating pin package with toggle lock - Size 40 mm - iØ 16 mm cross-cut key rod termination

WEIGHT 3,33 kg

DETTAGLIO: B
SCALA 1 : 1



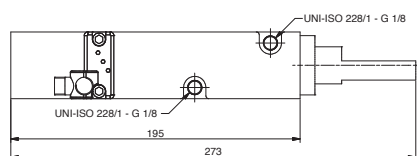
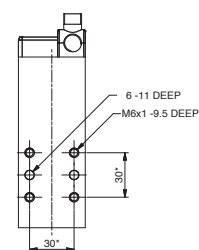
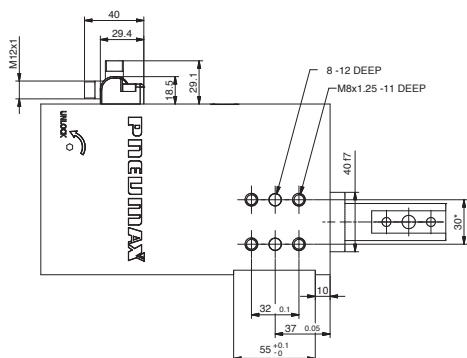
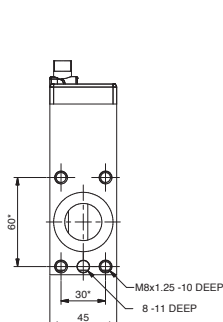
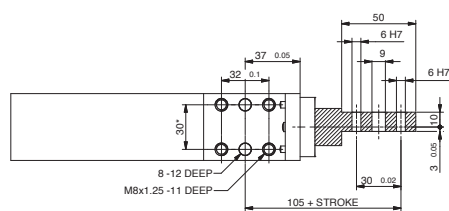
* DIMENSIONAL
TOLERANCE FOR
DOWEL HOLES: ±0.02

DIMENSIONAL
TOLERANCE FOR
THREADED HOLES: ±0.1

REV. 00 - 23/07/2021

RT40E40G3_ / Retractable locating pin package with toggle lock and manual operation - Size 40 mm rod termination for offset pins

WEIGHT 3,9 kg



* DIMENSIONAL
TOLERANCE FOR
DOWEL HOLES: ±0.02

DIMENSIONAL
TOLERANCE FOR
THREADED HOLES: ±0.1

REV. 01 - 30/06/2022

