

HP-Series



High Performance retractable locating pin package

Technical features

Pneumatic ports on both sides of the cylinder.

Operating features

Operating pressure	from 2 to 8 bar / from 30 to 115 psi
Lubrication	all the devices are lubricated for life at the factory. Inline air lubrication isn't required

Functional charts

Size 50 mm

• Max deflection

Stroke	Load (kg)	Load position A deviation (mm)	Load position B deviation (mm)	Load position C deviation (mm)
60 mm	0.5	0.007	0.012	0.01
	1	0.013	0.025	0.023
	1.5	0.02	0.04	0.036
	2	0.03	0.053	0.049
	2.5	0.038	0.067	0.064
	3	0.045	0.082	0.075
50 mm	0.5	0.006	0.009	0.007
	1	0.013	0.02	0.018
	1.5	0.021	0.032	0.028
	2	0.026	0.047	0.043
	2.5	0.032	0.66	0.057
	3	0.037	0.075	0.068
40 mm	0.5	0.004	0.009	0.004
	1	0.009	0.02	0.009
	1.5	0.013	0.032	0.013
	2	0.018	0.047	0.018
	2.5	0.022	0.66	0.022
	3	0.026	0.075	0.026
25 mm	0.5	0	0.005	0
	1	0.005	0.015	0.005
	1.5	0.007	0.032	0.007
	2	0.011	0.047	0.011
	2.5	0.012	0.66	0.012
	3	0.014	0.075	0.014
15 mm	0.5	0	0.005	0
	1	0.002	0.018	0
	1.5	0.004	0.025	0.002
	2	0.007	0.033	0.006
	2.5	0.012	0.043	0.009
	3	0.014	0.052	0.013

• Functional data (at 5 bar / 72.5 psi)

Thrust force	825 N
Pull force	1.960 N
Max bending moment	3 N m / 2.21 lb-ft
Max distance from the load centre to the rod	200 mm

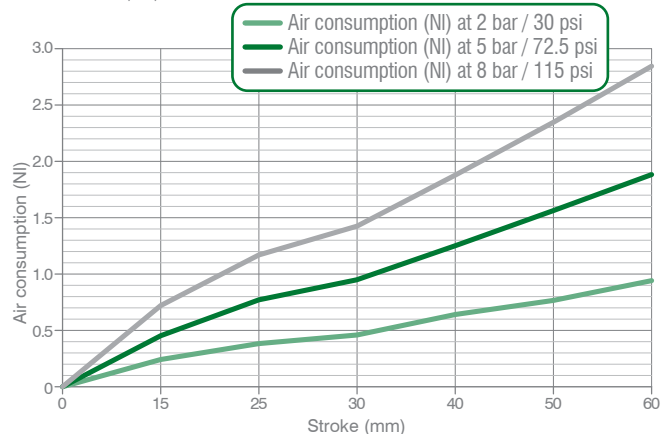
• Cycle time for max stroke

< 0.8 s NO flow valve required

• Air consumption

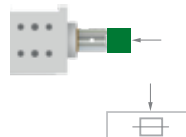
Air consumption for complete cycle

REV. 00 - 18/06/2015



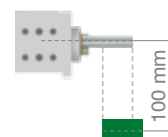
Load position **A**

Horizontal mounting position of the retractable locating pin/load centre on the rod



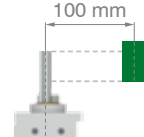
Load position **B**

Horizontal mounting position of the retractable locating pin/load centre at 100 mm from the rod axis



Load position **C**

Vertical mounting position of the retractable locating pin/load centre at 100 mm from the rod axis



Ordering string

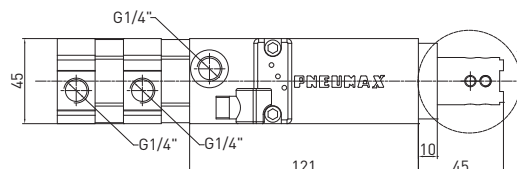
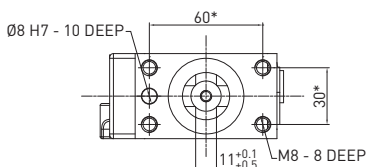
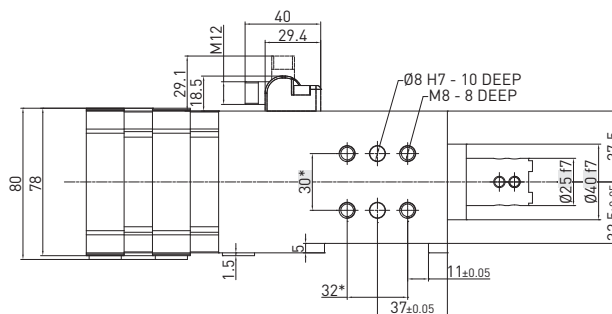
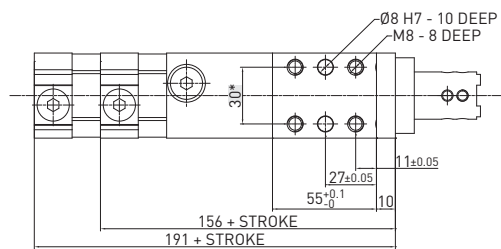
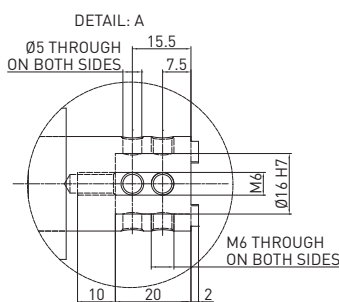
HP-Series

HP **50** **E** **40** **3** **G** **1**

HP	VERSION	HP = High Performance retractable locating pin package
50	SIZE	50 = Ø 50 mm
E	SENSOR	E = electronic sensor with M12 swivel connector - PNP A = electronic sensor with M12 swivel connector - NPN N = no sensor B = electronic sensor with M8 swivel connector - PNP
40	STROKE	15 = 15 mm 25 = 25 mm 40 = 40 mm 50 = 50 mm 60 = 60 mm
3	ROD TERMINATION	1 = iØ 16 mm cross-cut key rod termination 2 = iØ 10 mm cross-cut key rod termination 3 = rod termination for offset pins 4 = rod termination with key 5 = iØ 10 mm flat termination 6 = iØ 12 mm flat termination
G	PORTS	G = G thread – BSPP
1	ROD ORIENTATION (for termination type 3)	

LOCATING

HP50E_1 / High Performance retractable locating pin package - Size 50 mm - iØ 16 mm cross-cut key rod termination



WEIGHT 2.2 kg
min. stroke version

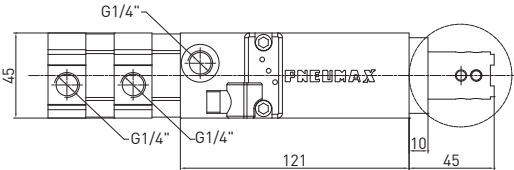
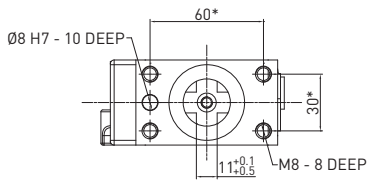
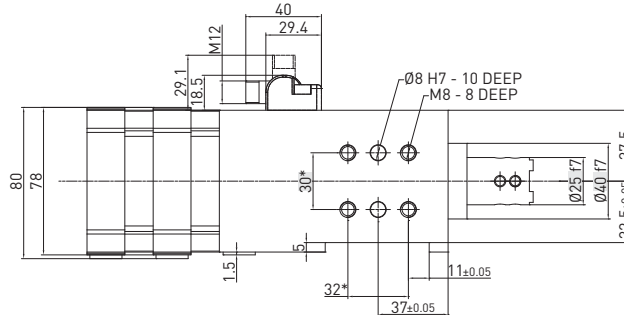
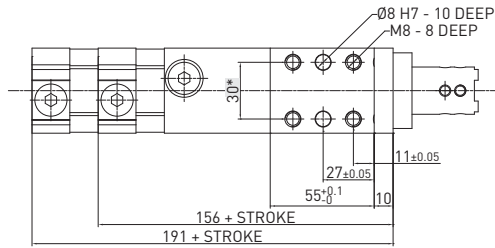
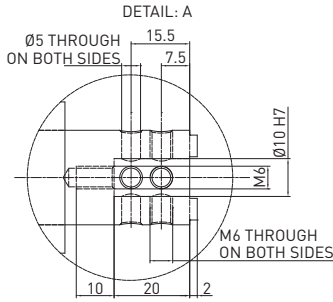
WEIGHT 2.5 kg
max. stroke version

REV. 01 - 26/02/2016

HP50E_2 / High Performance retractable locating pin package - Size 50 mm - iØ 10 mm cross-cut key rod termination

WEIGHT 2.2 kg
min. stroke version

WEIGHT 2.5 kg
max. stroke version

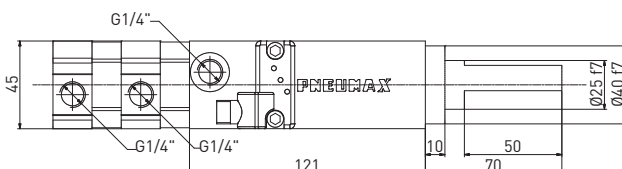
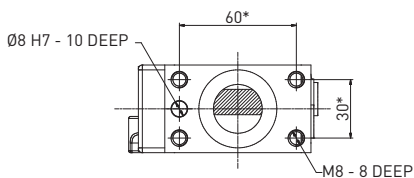
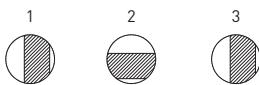
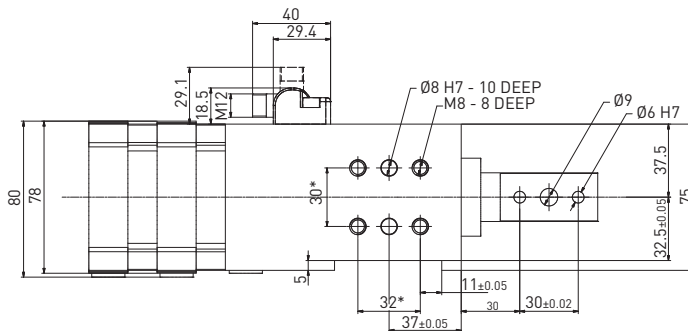
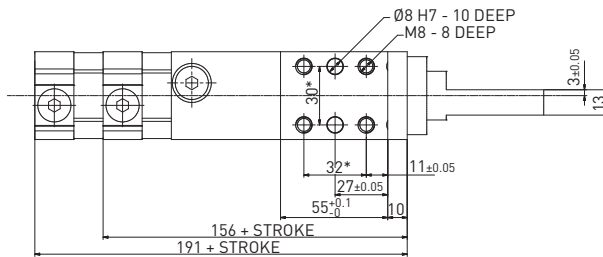


REV. 01 - 26/02/2016

HP50E_3 / High Performance retractable locating pin package - Size 50 mm - Rod termination for offset pins

WEIGHT 2.2 kg
min. stroke version

WEIGHT 2.5 kg
max. stroke version



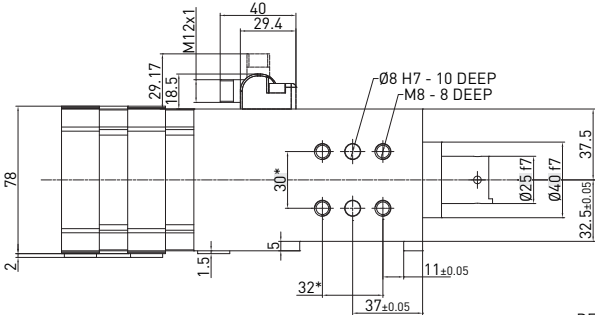
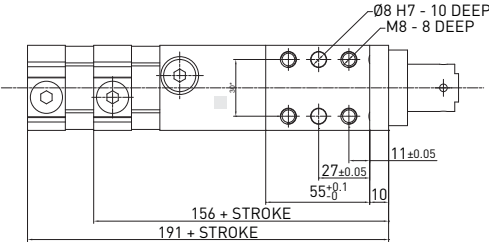
REV. 00 - 12/05/2015



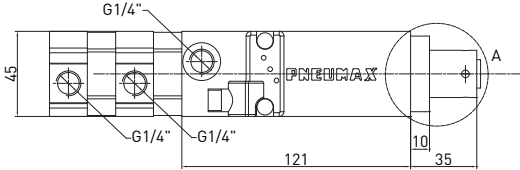
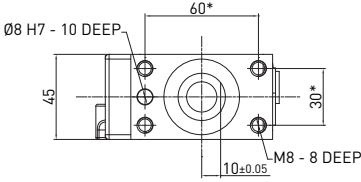
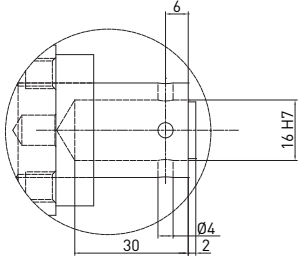
HP50E_4 / High Performance retractable locating pin package - Size 50 mm - Rod termination with key

WEIGHT 2.2 kg
min. stroke version

WEIGHT 2.5 kg
max. stroke version



DETAIL: A



REV. 00 - 31/03/2015

LOCATING