

FT-Series



Retractable locating pin packages with dual rods and toggle linkage

- Fully encapsulated toggle mechanism: in case of air loss, the working position remains secure
- Manual unlock mechanism to disengage the linkage in emergency situations
- Position repeatability ± 0.05 mm
- Clear design with user-friendly surfaces and no dirt or welding deposit traps

LOCATING

Technical features

Pneumatic ports on both sides of the cylinder.

Operating features

Operating pressure from 2 to 8 bar / from 30 to 115 psi

Lubrication all the devices are lubricated for life at the factory. Inline air lubrication isn't required

Functional charts

Size 50 mm

• Max deflection

| Stroke | Load (kg) | Load position B deviation (mm) | Load position C deviation (mm) |
|--------|-----------|---------------------------------------|---------------------------------------|
| 40 mm | 0.5 | 0.001 | 0.002 |
| | 1 | 0.001 | 0.002 |
| | 1.5 | 0.001 | 0.002 |
| | 2 | 0.001 | 0.002 |
| | 2.5 | 0.001 | 0.004 |
| | 3 | 0.001 | 0.004 |
| | 3.5 | 0.002 | 0.004 |
| | 4 | 0.002 | 0.004 |

• Functional data (at 5 bar / 72.5 psi)

| | |
|--|--------|
| Thrust force | 4900 N |
| Max distance from the load centre to the rod | 200 mm |

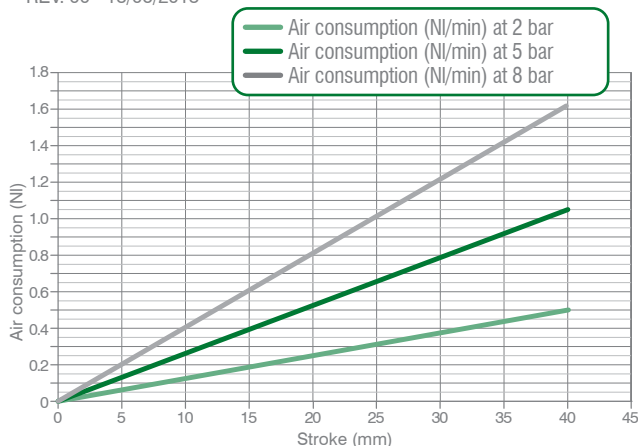
• Cycle time for max stroke

< 0.8 s NO flow valve required

• Air consumption

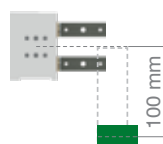
Air consumption for complete cycle

REV. 00 - 18/06/2015



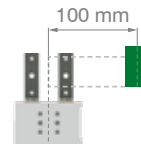
Load position **B**

Horizontal mounting position of the retractable locating pin/load centre at 100 mm from the rod axis



Load position **C**

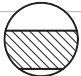
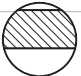
Vertical mounting position of the retractable locating pin/load centre at 100 mm from the rod axis

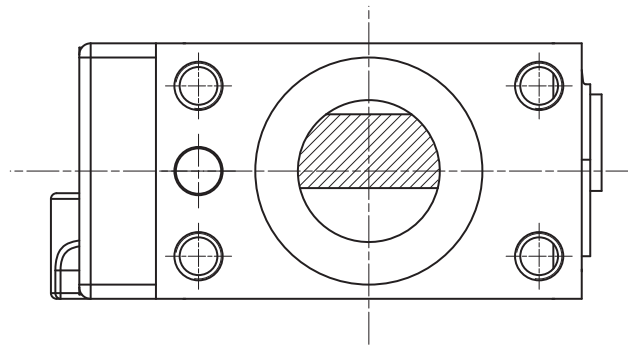


FT-Series / Ordering string

FT_50-series

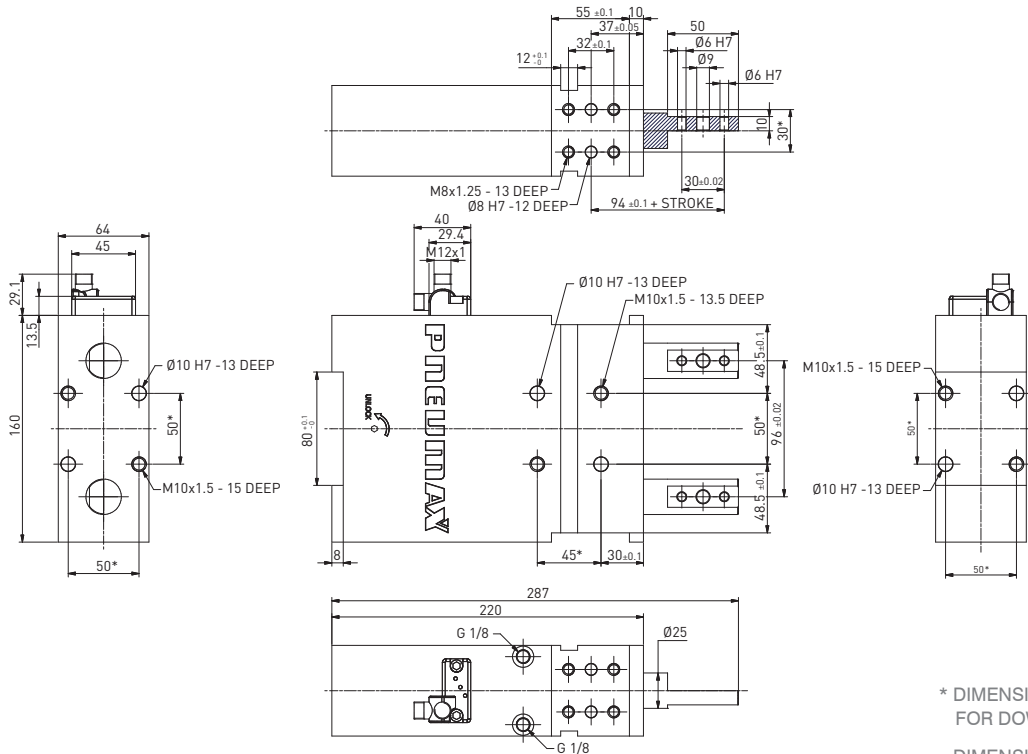
F **T** **50** **E** **40** **G** **5** **2**

| | | |
|-----------|------------------------|---|
| F | VERSION | F = Retractable locating pin packages with dual rods |
| T | OPERATION | T = pneumatic with toggle lock TD = pneumatic with manual operation and toggle lock |
| 50 | SIZE | 50 = Ø 50 mm |
| E | SENSOR | E = electronic sensor with M12 swivel connector - PNP |
| 40 | STROKE | 40 = 40 mm |
| G | PORTS | G = G thread – BSPP |
| 3 | ROD TERMINATION | 3 = Mounting surface on the rods corresponds to the pin package axis 5 = 2.5 mm out of the axis mounting surface |
| 2 | ROD ORIENTATION | 2 =  4 =  |



FT50E40G3_ / Retractable locating pin package with dual rods and toggle linkage - Size 50 mm
Rod termination 3 – in line to the pin package axis

WEIGHT 7 kg

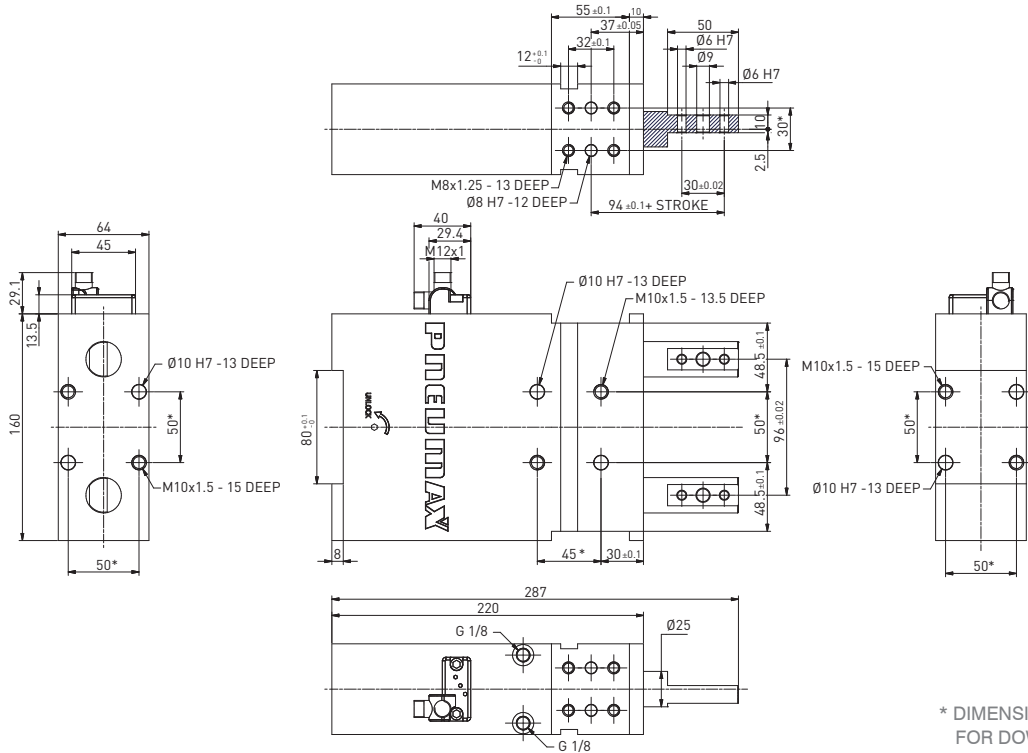


* DIMENSIONAL TOLERANCE FOR DOWEL HOLES: ±0.02
DIMENSIONAL TOLERANCE FOR THREADED HOLES: ±0.1

REV. 01 - 27/04/2021

FT50E40G5_ / Retractable locating pin package with dual rods and toggle linkage - Size 50 mm
Rod termination 5 – 2.5 mm out of axis mounting surface

WEIGHT 7 kg



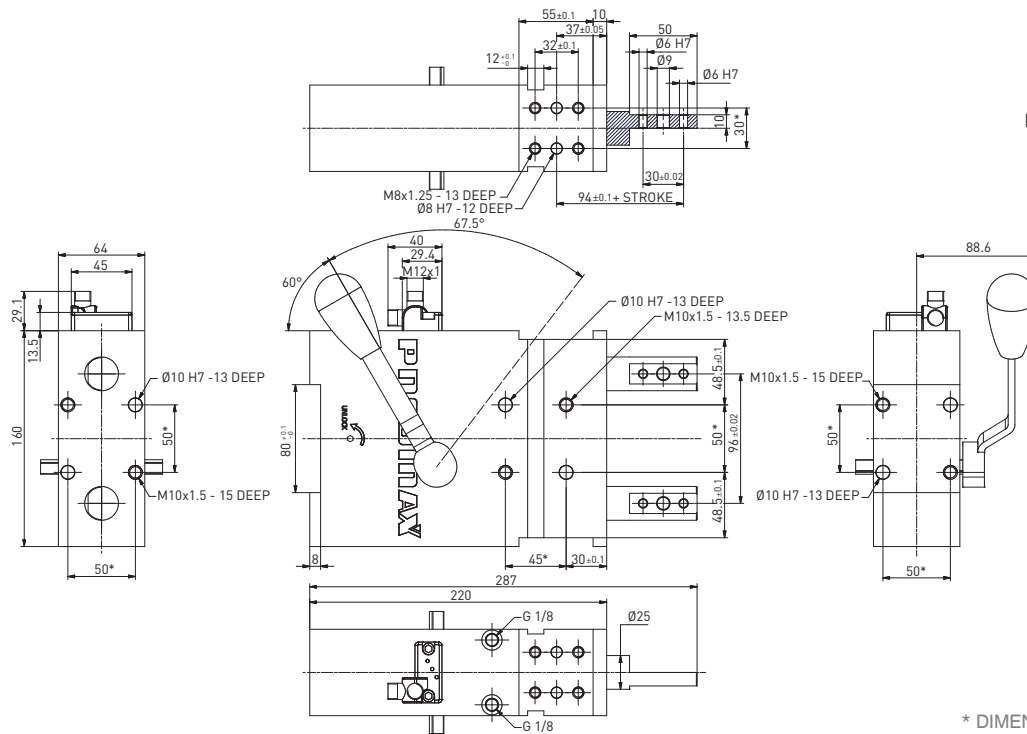
* DIMENSIONAL TOLERANCE FOR DOWEL HOLES: ±0.02
DIMENSIONAL TOLERANCE FOR THREADED HOLES: ±0.1

REV. 01 - 27/04/2021

FTD50E40G3 / Retractable locating pin package with dual rods and toggle linkage and manual operation - Size 50 mm
Rod termination 3 – in line to the pin package axis

WEIGHT 7,5 KG
Handle included

Max Hand Force: 200 N



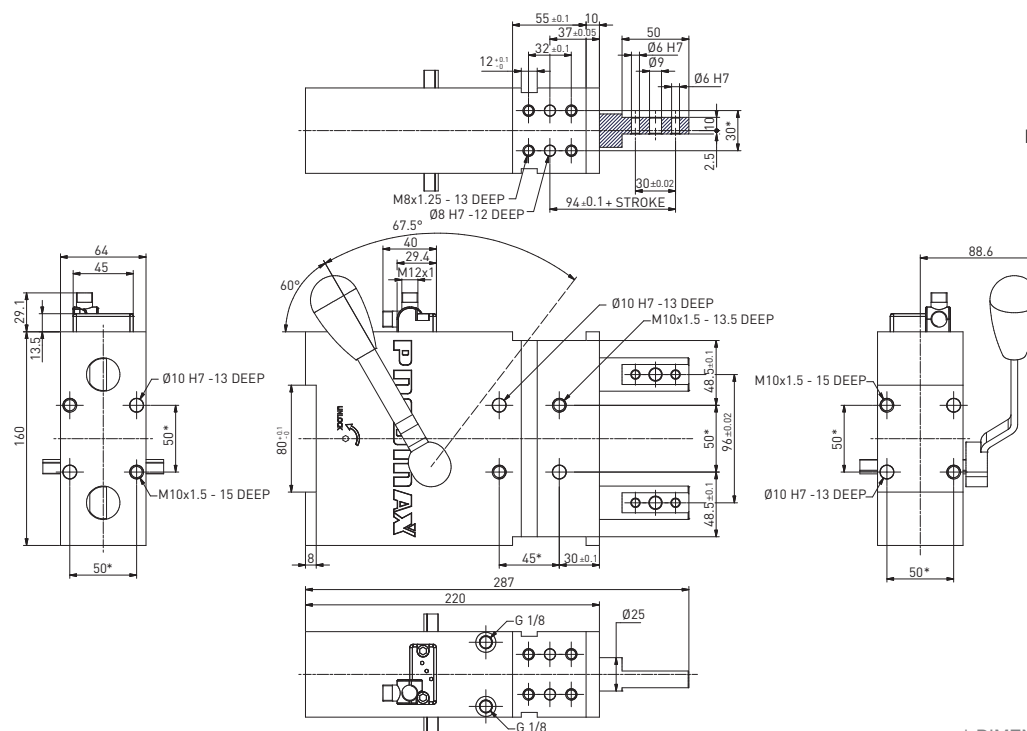
* DIMENSIONAL TOLERANCE
FOR DOWEL HOLES: ± 0.02
DIMENSIONAL TOLERANCE
FOR THREADED HOLES: ± 0.1

REV. 01 - 27/04/2021

FTD50E40G5 / Retractable locating pin package with dual rods and toggle linkage and manual operation - Size 50 mm
Rod termination 5 – 2.5 mm out of axis mounting surface

WEIGHT 7,5 KG
Handle included

Max Hand Force: 200 N



* DIMENSIONAL TOLERANCE
FOR DOWEL HOLES: ± 0.02
DIMENSIONAL TOLERANCE
FOR THREADED HOLES: ± 0.1

REV. 01 - 27/04/2021