

# CB-Series



## Power clamp with double arm

- Stepless adjustable opening angle
- Toggle lock mechanism
- Unlock manual override > in case of air loss the clamp can be opened manually
- Pneumatic ports on both sides of the cylinder
- Extremely compact dimensions
- 4-sided mounting pattern

CLAMPING

### Technical features

**Manual release button** to open the linkage when air pressure is removed during setup. **Pneumatic ports on both sides** of the cylinder.

#### Operating features

**Operating pressure** from 2 to 8 bar / from 30 to 115 psi

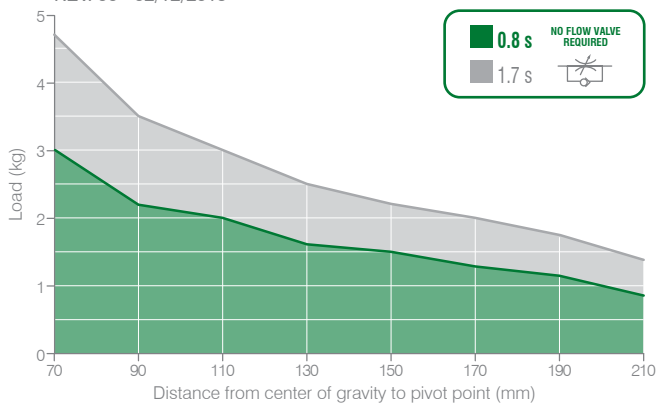
**Lubrication** all the devices are lubricated for life at the factory. Inline air lubrication isn't required

### Functional charts

#### Size 40 mm

##### • Tooling weight chart

5 bar operating pressure – 135° opening angle  
REV. 00 - 02/12/2019



##### • Clamping moment (at 5 bar / 72.5 psi)

**85 N m / 62,69 lb-ft**

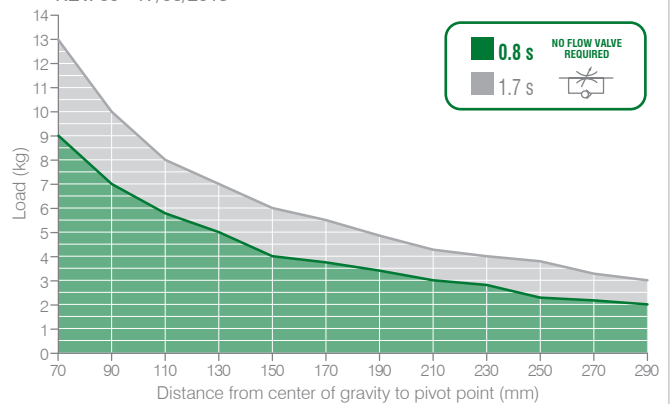
##### • Cycle time

**0.8 s at 90°**

#### Size 63 mm

##### • Tooling weight chart

5 bar operating pressure – 135° opening angle  
REV. 00 - 17/06/2015



##### • Clamping moment (at 5 bar / 72.5 psi)

**170 N m / 125,39 lb-ft**

##### • Cycle time

**0.8 s at 90°**

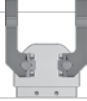

The above data are meant for correct working conditions of the clamp with the same performance level during its life time. For applications which exceed the above data, please contact our sales representatives.

**Ordering string**

**CB-Series**

**CB 40 E G 5 A 01**

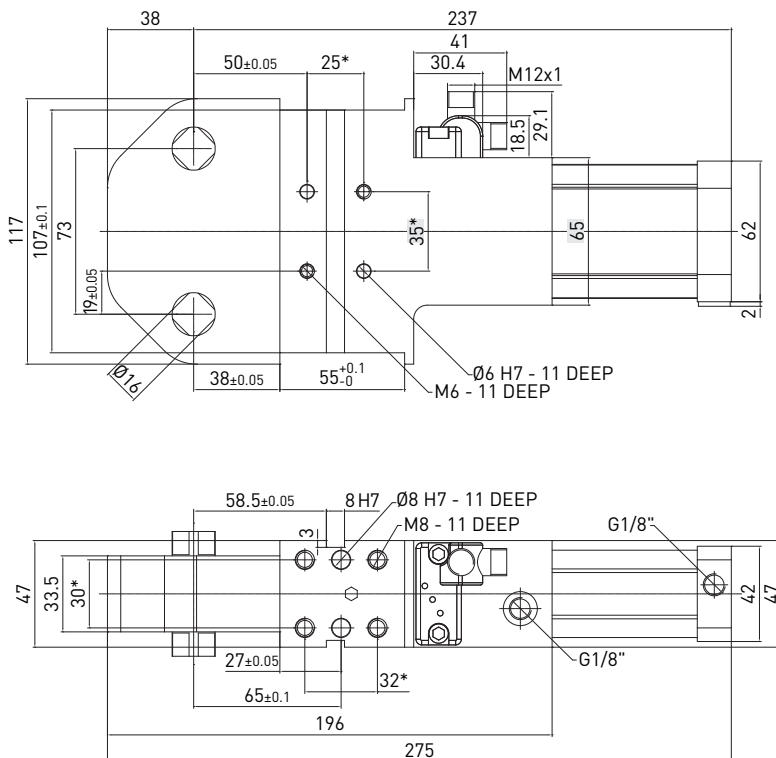
CLAMPING

|           |                       |  |
|-----------|-----------------------|--|
| <b>CB</b> | <b>VERSION</b>        | <b>CB</b> = double arm clamp   |
| <b>40</b> | <b>SIZE</b>           | <b>40</b> = Ø 40 mm<br><b>63</b> = Ø 63 mm   |
| <b>E</b>  | <b>SENSOR</b>         | <b>E</b> = electronic sensor with M12 swivel connector - PNP   |
| <b>G</b>  | <b>PORTS</b>          | <b>G</b> = G thread – BSPP   |
| <b>5</b>  | <b>ARM MOUNT</b>      | <b>5</b> =  <b>6</b> =           |
| <b>A</b>  | <b>ARM MATERIAL</b>   | <b>A</b> = aluminum  |
| <b>01</b> | <b>CLAMP ARM TYPE</b> | <b>01</b> = wishbone, central, 15 mm offset<br><b>02</b> = wishbone, right, 15 mm offset<br><b>03</b> = wishbone, left, 15 mm offset<br><b>61</b> = wishbone, 10 mm offset specific for CB40 clamp |

Stepless adjustment from 13° to 180° for size 40 mm  
Stepless adjustment from 8° to 180° for size 63 mm

**CB40EG / Power clamp with double arm - 40 mm bore**

**WEIGHT 2.5 kg**

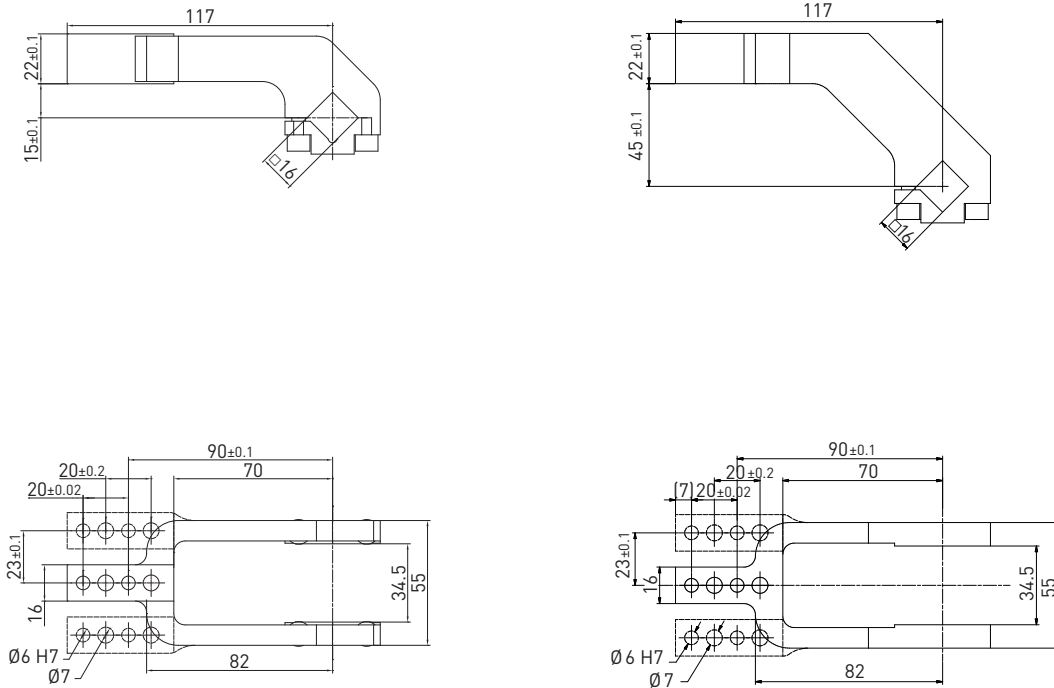


\* DIMENSIONAL TOLERANCE FOR DOWEL HOLES: ±0.02  
DIMENSIONAL TOLERANCE FOR THREADED HOLES: ±0.1

REV. 00 - 20/09/2018

## Clamping arms / 16 mm shaft

REV. 00 - 31/03/2015



CLAMPING

### 16 mm shaft – 15 mm offset



| Part no. | Material | Version | Weight (kg) | Max op. angle pos. 5 |
|----------|----------|---------|-------------|----------------------|
| B1601    | Aluminum | Central | 0.24        | 90°                  |
| Q1601    | Steel    | Central | 0.44        | 90°                  |
| B1602    | Aluminum | Right   | 0.24        | 90°                  |
| Q1602    | Steel    | Right   | 0.46        | 90°                  |
| B1603    | Aluminum | Left    | 0.24        | 90°                  |
| Q1603    | Steel    | Left    | 0.46        | 90°                  |

Screws: M6x20 Tightening torque: 10 N m / 7.37 lb ft

### 16 mm shaft – 45 mm offset

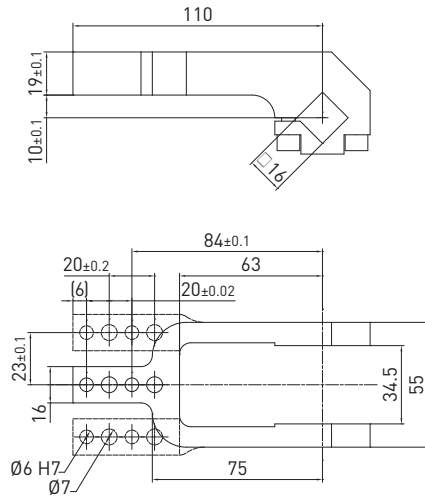


| Part no. | Material | Version | Weight (kg) | Max op. angle pos. 5 |
|----------|----------|---------|-------------|----------------------|
| B1604    | Aluminum | Central | 0.3         | 90°                  |
| Q1604    | Steel    | Central | 0.55        | 90°                  |
| B1605    | Aluminum | Right   | 0.3         | 90°                  |
| Q1605    | Steel    | Right   | 0.57        | 90°                  |
| B1606    | Aluminum | Left    | 0.3         | 90°                  |
| Q1606    | Steel    | Left    | 0.57        | 90°                  |

Screws: M6x20 Tightening torque: 10 N m / 7.37 lb ft

## Clamping arms / 16 mm shaft - 10 mm offset - Specific for CB40 clamps

REV. 00 - 24/09/2019



### 16 mm shaft - 10 mm offset

| Part no.     | Material        | Version        | Weight (kg) | Max op. angle pos. 5 | Max op. angle pos. 6 |
|--------------|-----------------|----------------|-------------|----------------------|----------------------|
| <b>B1661</b> | <b>Aluminum</b> | <b>Central</b> | <b>0.24</b> | <b>90°</b>           | <b>90°</b>           |

Screws: M6x25 Tightening torque: 10 N m / 7.37 lb-ft

### 16 mm shaft - 0 mm offset

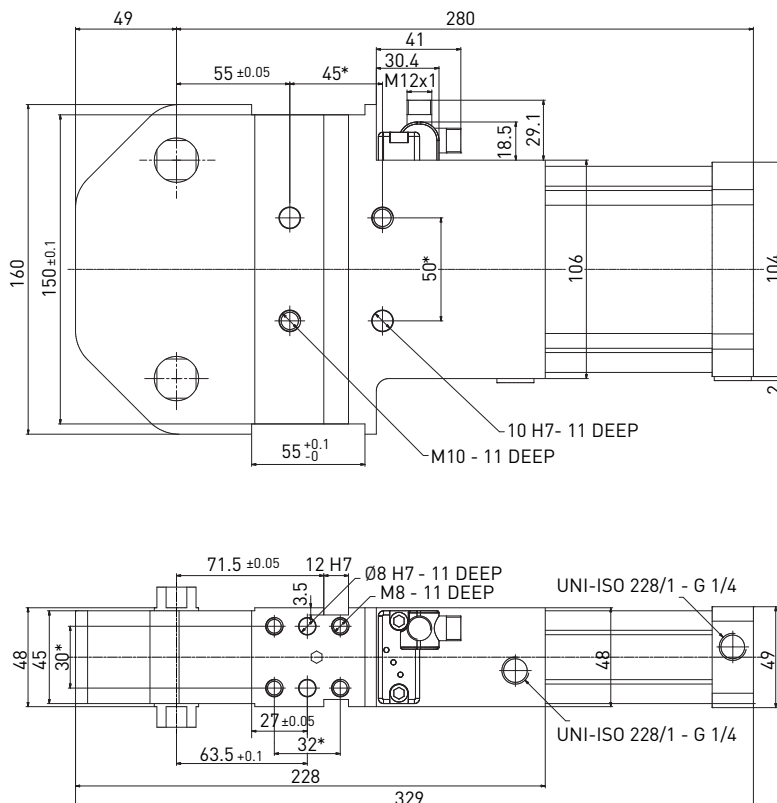
| Part no.     | Material        | Version        | Weight (kg) | Max op. angle pos. 5 | Max op. angle pos. 6 |
|--------------|-----------------|----------------|-------------|----------------------|----------------------|
| <b>B1618</b> | <b>Aluminum</b> | <b>Central</b> | <b>0.22</b> | <b>90°</b>           | <b>90°</b>           |

Screws: M6x25 Tightening torque: 10 N m / 7.37 lb-ft

**WEIGHT 2.5 kg**

## CB63EG / Power clamp with double arm - 63 mm bore

**WEIGHT 6 kg**

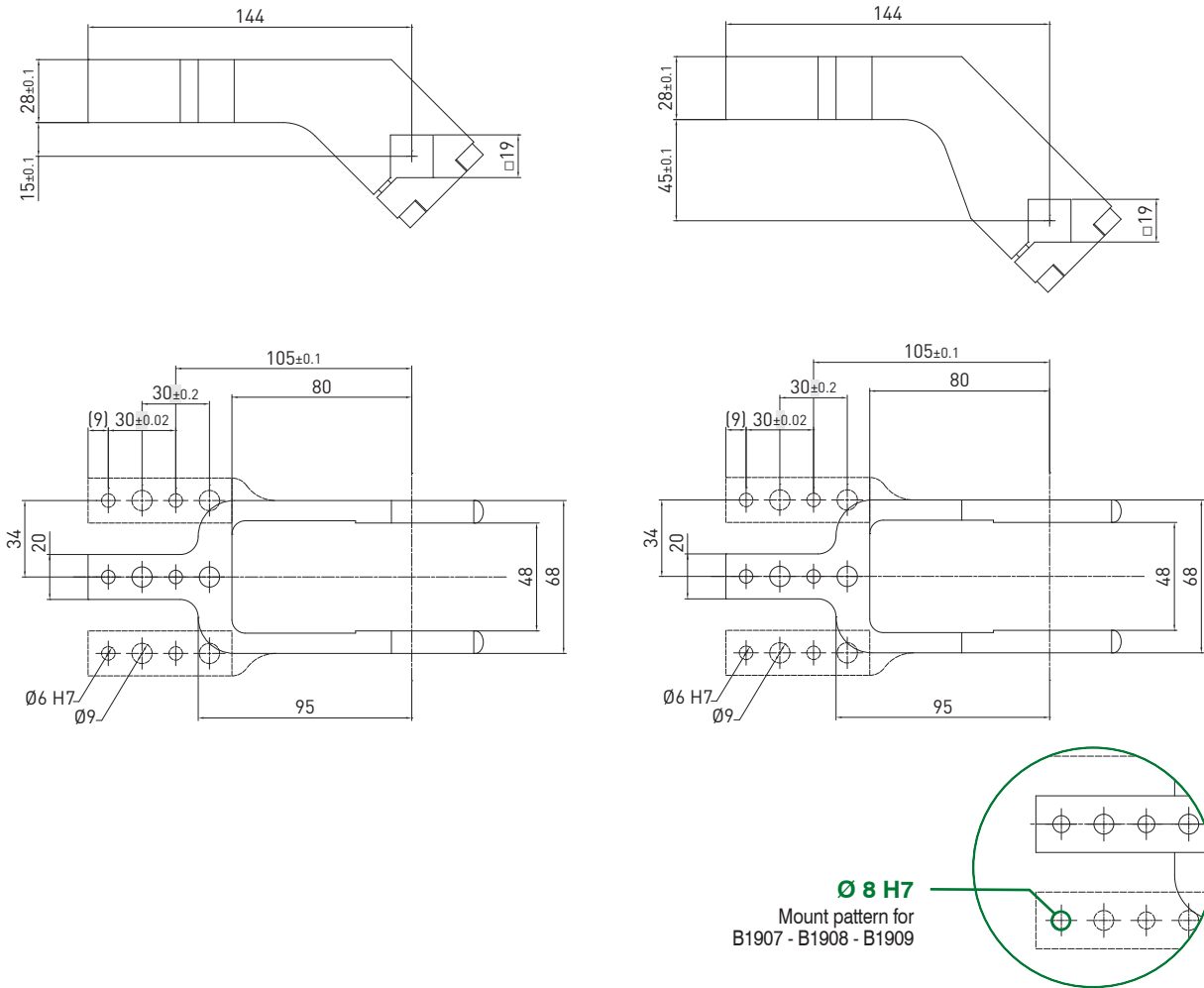


\* DIMENSIONAL TOLERANCE  
FOR DOWEL HOLES:  $\pm 0.02$   
DIMENSIONAL TOLERANCE  
FOR THREADED HOLES:  $\pm 0.1$

REV. 00 - 24/09/2019

## Clamping arms / 19 mm shaft

REV. 01 - 08/02/2019



CLAMPING

### 19 mm shaft – 15 mm offset

| Part no. | Material | Version | Weight (kg) | Max op. angle pos. |     |
|----------|----------|---------|-------------|--------------------|-----|
|          |          |         |             | 5                  | 6   |
| B1901    | Aluminum | Central | 0.41        | 90°                | 90° |
| Q1901    | Steel    | Central | 0.71        | 90°                | 90° |
| B1902    | Aluminum | Right   | 0.43        | 90°                | 90° |
| Q1902    | Steel    | Right   | 0.79        | 90°                | 90° |
| B1903    | Aluminum | Left    | 0.43        | 90°                | 90° |
| Q1903    | Steel    | Left    | 0.79        | 90°                | 90° |
| B1907    | Aluminum | Central | 0.41        | 90°                | 90° |
| B1908    | Aluminum | Right   | 0.43        | 90°                | 90° |
| B1909    | Aluminum | Left    | 0.43        | 90°                | 90° |

Screws: M6x25 Tightening torque: 10 N m / 7.37 lb ft

### 19 mm shaft – 45 mm offset

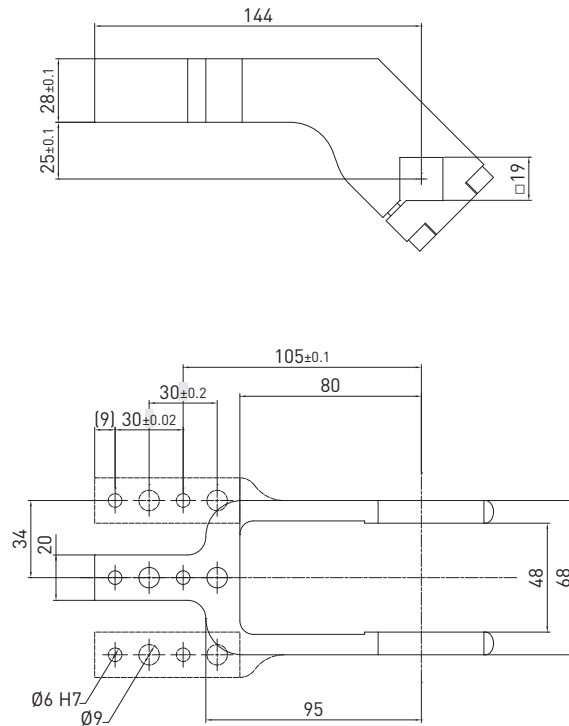
| Part no. | Material | Version | Weight (kg) | Max op. angle pos. |     |
|----------|----------|---------|-------------|--------------------|-----|
|          |          |         |             | 5                  | 6   |
| B1904    | Aluminum | Central | 0.45        | 90°                | 90° |
| Q1904    | Steel    | Central | 0.77        | 90°                | 90° |
| B1905    | Aluminum | Right   | 0.46        | 90°                | 90° |
| Q1905    | Steel    | Right   | 0.81        | 90°                | 90° |
| B1906    | Aluminum | Left    | 0.46        | 90°                | 90° |
| Q1906    | Steel    | Left    | 0.81        | 90°                | 90° |

Screws: M6x25 Tightening torque: 10 N m / 7.37 lb ft

## Clamping arms / 19 mm shaft

REV. 01 - 08/02/2019

CLAMPING



### 19 mm shaft – 25 mm offset

| Part no.     | Material        | Version        | Weight (kg) | Max op. angle pos. 5 | Max op. angle pos. 6 |
|--------------|-----------------|----------------|-------------|----------------------|----------------------|
| <b>B1921</b> | <b>Aluminum</b> | <b>Central</b> | <b>0.43</b> | <b>90°</b>           | <b>90°</b>           |
| <b>B1922</b> | <b>Aluminum</b> | <b>Central</b> | <b>0.44</b> | <b>90°</b>           | <b>90°</b>           |
| <b>B1923</b> | <b>Aluminum</b> | <b>Central</b> | <b>0.44</b> | <b>90°</b>           | <b>90°</b>           |

Screws: M6x25 Tightening torque: 10 N m / 7.37 lb ft