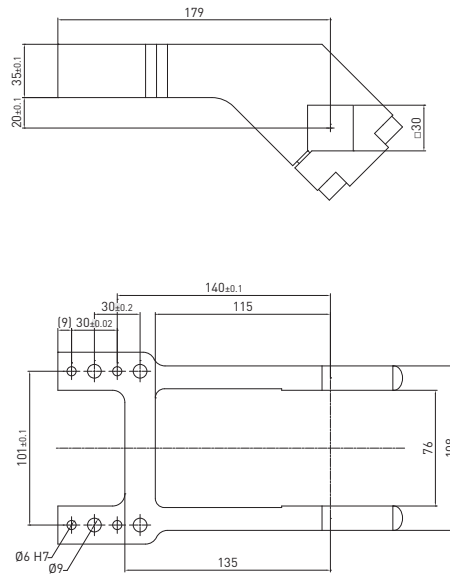


Clamping arms / 30 mm shaft

REV. 00 - 28/11/2019



30 mm shaft – 20 mm offset

| Part no. | Material | Version | Weight (kg) | Max op. angle pos. 1 | Max op. angle pos. 2 | Max op. angle pos. 3 | Max op. angle pos. 4 |
|--------------|-----------------|----------|-------------|----------------------|----------------------|----------------------|----------------------|
| B3016 | Aluminum | H | 1.4 | 135° | 110° | 135° | 75° |

Screws: M10x40 Tightening torque: 35 N m / 25.81 lb ft

C2-Series

Pneumatic power clamps conforming to the NAAMS Standard



Pneumax clamps' series have all been developed with a modern and compact design which goes towards **enhancing the operational performances**, such as the cycle time, combined with a very limited total weight without compromising their **strength** and **resistance**.

CLAMPING

Technical features

Manual release button to open the linkage when air pressure is removed during setup. **Pneumatic ports on both sides** of the cylinder.

Operating features

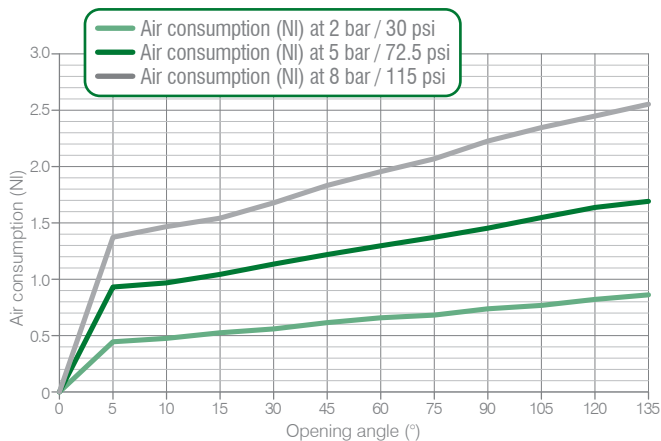
| | |
|---------------------------|---|
| Operating pressure | from 2 to 8 bar / from 30 to 115 psi |
| Lubrication | all the devices are lubricated for life at the factory. Inline air lubrication isn't required |

Functional charts

Size 50 mm

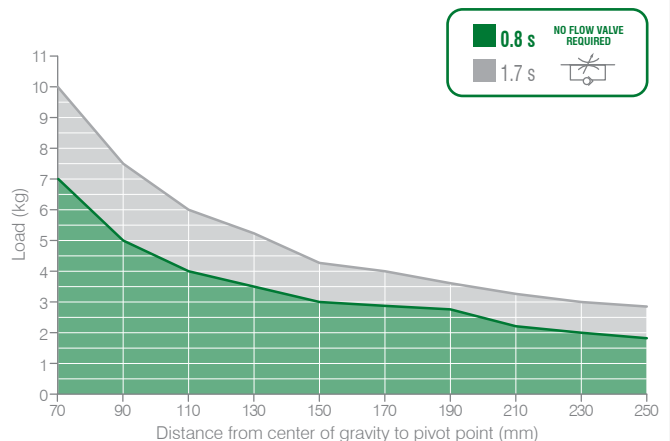
- Air consumption**

Air consumption for complete cycle (opening and closing)
REV. 00 - 16/06/2015



- Tooling weight chart**

5 bar operating pressure – 135° opening angle
REV. 00 - 16/06/2015



- Clamping moment (at 5 bar / 72.5 psi)**

185 N m / 136,44 lb-ft

- Holding moment**

800 N m / 590,04 lb-ft

The above data are meant for correct working conditions of the clamp with the same performance level during its life time. For applications which exceed the above data, please contact our sales representatives.

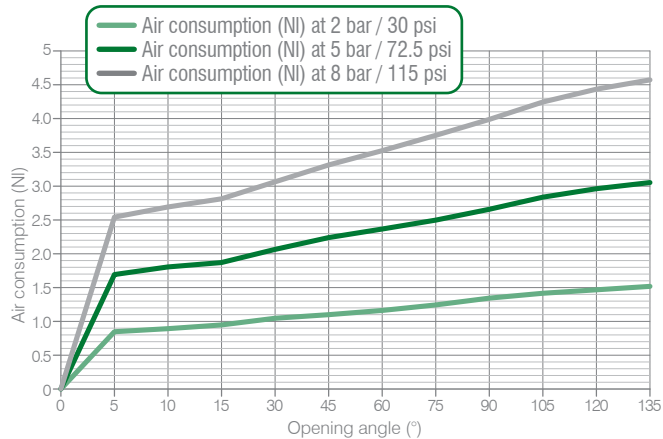
Size 63 mm

CLAMPING

- Air consumption**

Air consumption for complete cycle (opening and closing)

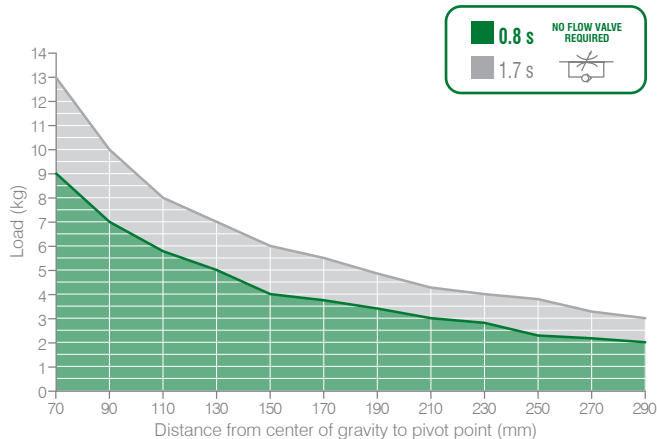
REV. 00 - 17/06/2015



- Tooling weight chart**

5 bar operating pressure – 135° opening angle

REV. 00 - 17/06/2015



- Clamping moment (at 5 bar / 72.5 psi)**

390 N m / 287,64 lb-ft

- Holding moment**

1.500 N m / 1.106,34 lb-ft

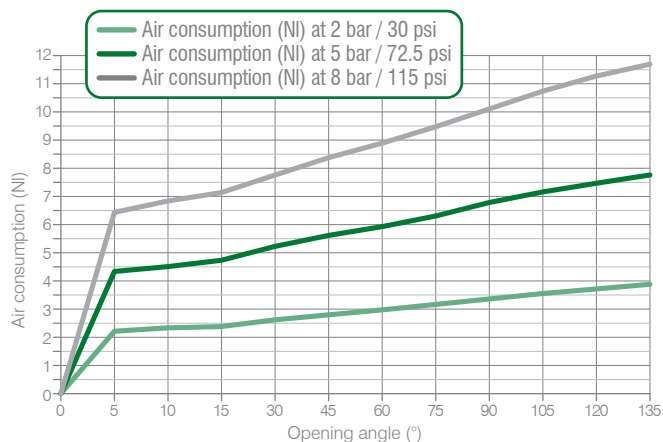
The above data are meant for correct working conditions of the clamp with the same performance level during its life time. For applications which exceed the above data, please contact our sales representatives.

Size 80 mm

- Air consumption**

Air consumption for complete cycle (opening and closing)

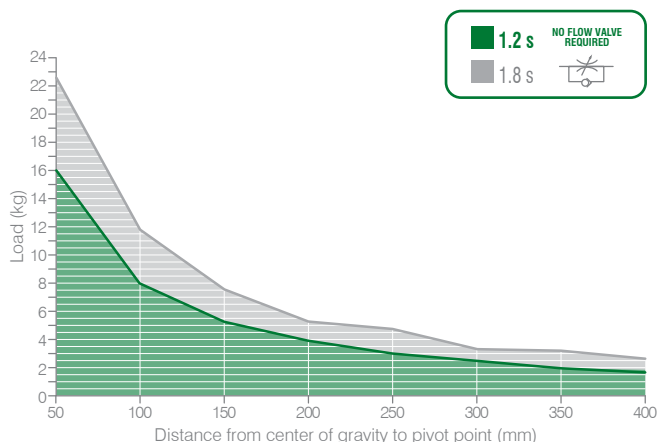
REV. 00 - 29/05/2015



- Tooling weight chart**

5 bar operating pressure – 135° opening angle

REV. 00 - 29/05/2016



- Clamping moment (at 5 bar / 72.5 psi)**

850 N m / 626,92 lb-ft

- Holding moment**

2.500 N m / 1.843,90 lb-ft

The above data are meant for correct working conditions of the clamp with the same performance level during its life time. For applications which exceed the above data, please contact our sales representatives.

C2-Series / Ordering string

C2-Series

C 2 P 50 E N L

| | | |
|-----------|-------------------------|---|
| C | VERSION | C = clamp |
| 2 | MOUNTING PATTERN | 2 = NAAMS Standard |
| P | OPERATION | P = pneumatic D = pneumatic with manual operation DO = output shaft for manual operation - no lever and no handle included |
| 50 | SIZE | 50 = Ø 50 mm 63 = Ø 63 mm 80 = Ø 80 mm |
| E | SENSOR | E = electronic sensor with M12 swivel connector - PNP A = electronic sensor with M12 swivel connector - NPN N = no sensor B = electronic sensor with M8 swivel connector - PNP |
| N | PORTS | G = G thread – BSPP N = NPT |
| L | SHAFT OUTPUT | L = dual output L̄ = single output - LEFT R = single output - RIGHT |

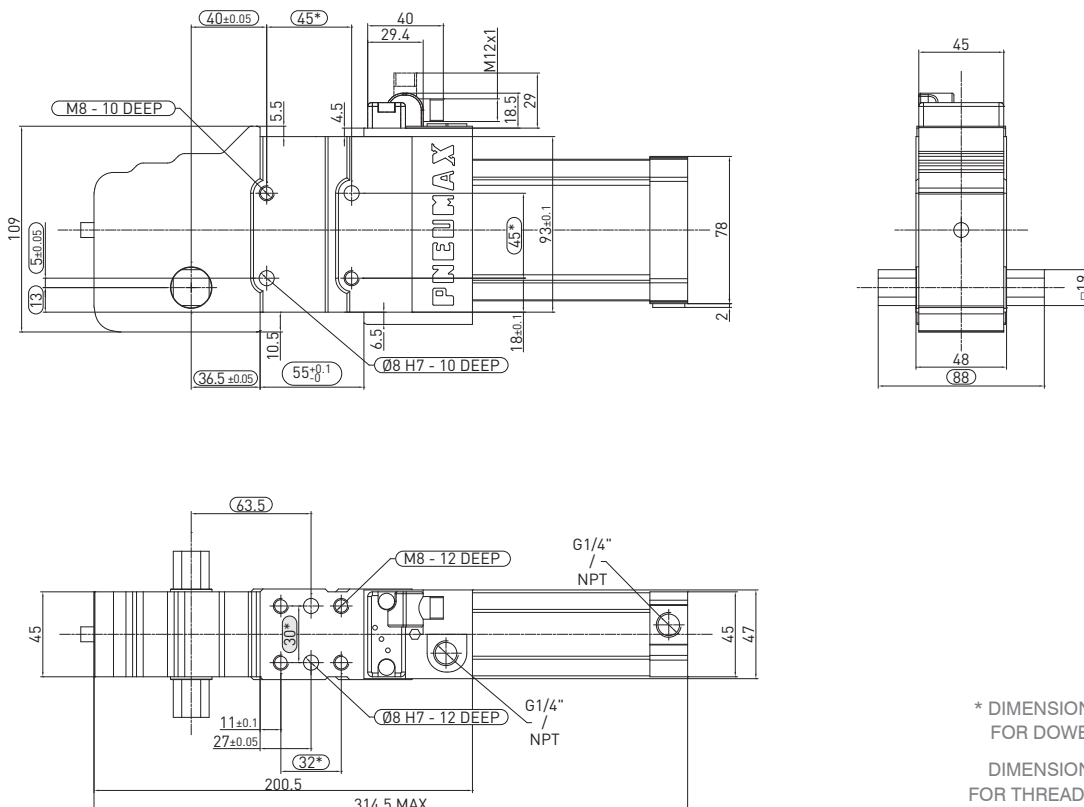


CLAMPING

NAAMS clamping arms to be ordered separately
Please see the charts in the datasheets
for arm position as well as for max. opening angle

C2P50E / Power clamp - NAAMS Std - 50 mm bore

WEIGHT 2.7 kg



* DIMENSIONAL TOLERANCE
FOR DOWEL HOLES: ±0.02
DIMENSIONAL TOLERANCE
FOR THREADED HOLES: ±0.1

REV. 01 - 15/05/2016

C2D250E / Power clamp - NAAMS Std - 50 mm bore with manual operation

CLAMPING

WEIGHT 3.17 kg
D2 handle included

Handle swivel angle

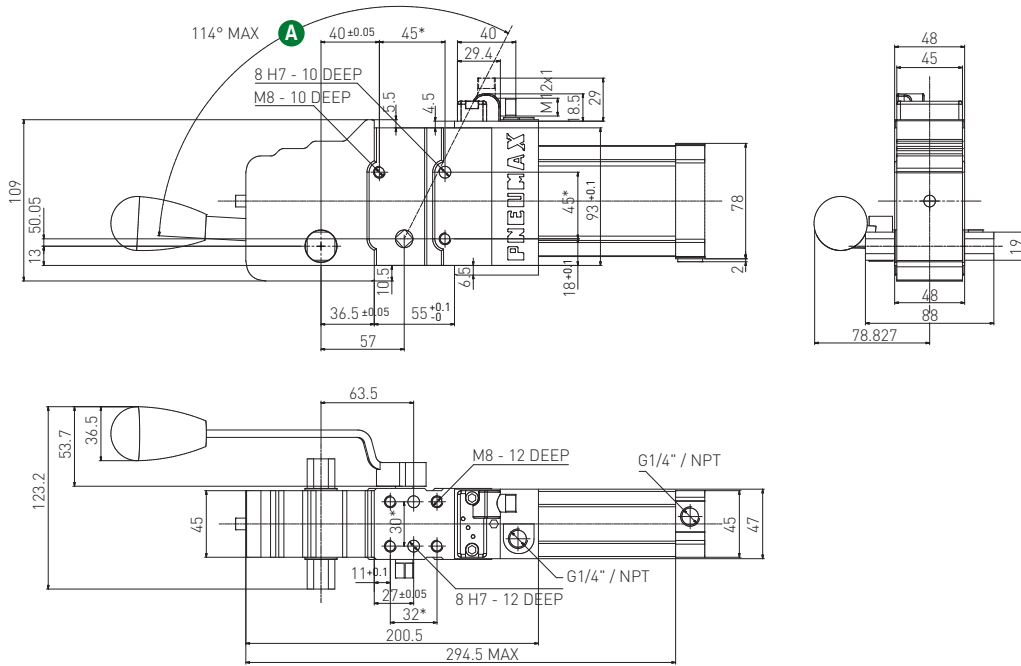
| Arm opening angle | Handle swivel angle A |
|-------------------|------------------------------|
| 0° | 3.25° |
| 15° | 27° |
| 30° | 43° |
| 45° | 59.3° |
| 60° | 75.4° |
| 75° | 89.75° |
| 90° | 101° |
| 105° | 109° |
| 120° | 114.25° |
| 135° | 117.2° |

Max Hand Force: 200 N

* DIMENSIONAL TOLERANCE FOR DOWEL HOLES: ±0.02

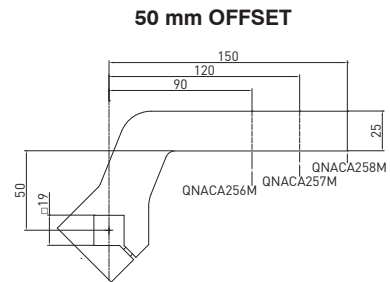
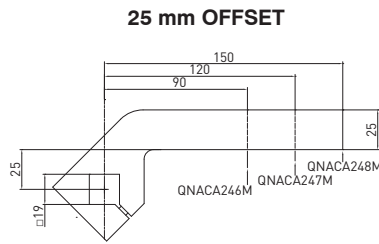
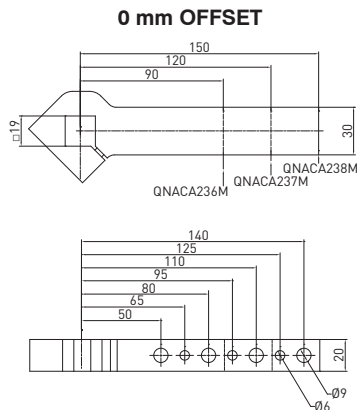
DIMENSIONAL TOLERANCE FOR THREADED HOLES: ±0.1

REV. 01 - 15/05/2016



Clamping arms / 19 mm shaft - NAAMS Std

REV 03 - 29/03/2019



19 mm shaft – 0 mm offset

| Part no. | Material | Length (mm) | Weight (kg) | Max op. angle pos. 1 | Max op. angle pos. 2 | Max op. angle pos. 3 | Max op. angle pos. 4 |
|-----------|----------|-------------|-------------|----------------------|----------------------|----------------------|----------------------|
| QNACA236M | Steel | 90 | 0.4 | 135° | 135° | 135° | 135° |
| QNACA237M | Steel | 120 | 0.49 | 135° | 135° | 135° | 135° |
| QNACA238M | Steel | 150 | 0.58 | 135° | 135° | 135° | 135° |

Screws: M6x25 Tightening torque: 10 N m / 7.37 lb-ft

19 mm shaft – 25 mm offset

| Part no. | Material | Length (mm) | Weight (kg) | Max op. angle pos. 1 | Max op. angle pos. 2 | Max op. angle pos. 3 | Max op. angle pos. 4 |
|-----------|----------|-------------|-------------|----------------------|----------------------|----------------------|----------------------|
| QNACA246M | Steel | 90 | 0.44 | 135° | 135° | 135° | 135° |
| QNACA247M | Steel | 120 | 0.52 | 135° | 135° | 135° | 135° |
| QNACA248M | Steel | 150 | 0.6 | 135° | 135° | 135° | 135° |

Screws: M6x25 Tightening torque: 10 N m / 7.37 lb-ft

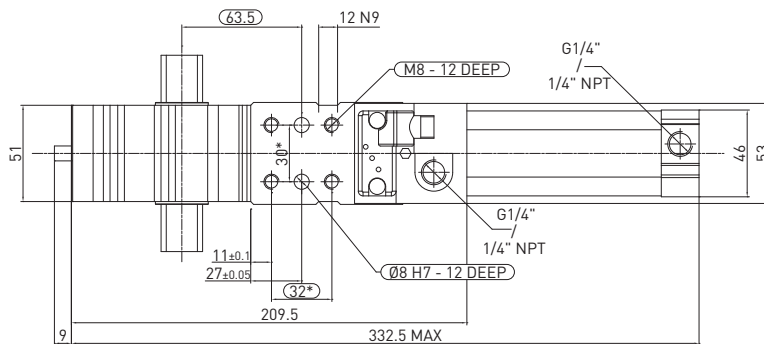
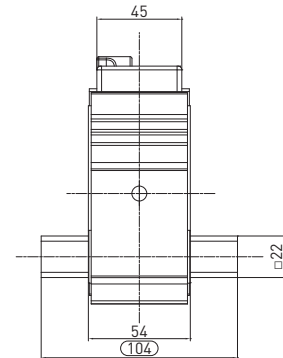
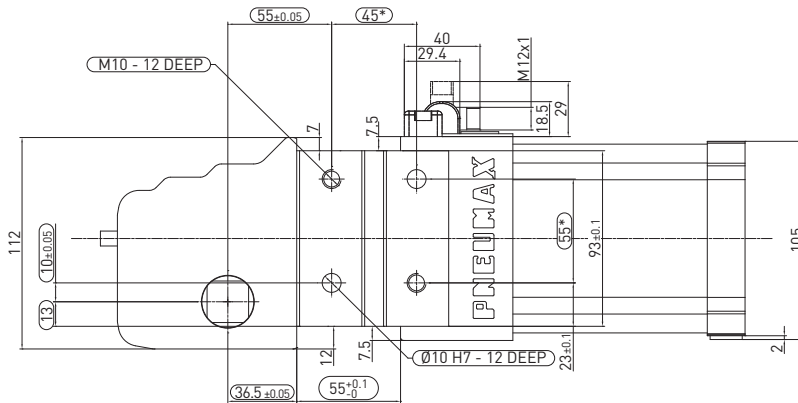
19 mm shaft – 50 mm offset

| Part no. | Material | Length (mm) | Weight (kg) | Max op. angle pos. 1 | Max op. angle pos. 2 | Max op. angle pos. 3 | Max op. angle pos. 4 |
|-----------|----------|-------------|-------------|----------------------|----------------------|----------------------|----------------------|
| QNACA256M | Steel | 90 | 0.52 | 135° | 135° | 135° | 135° |
| QNACA257M | Steel | 120 | 0.6 | 135° | 135° | 135° | 135° |
| QNACA258M | Steel | 150 | 0.68 | 135° | 135° | 135° | 135° |

Screws: M6x25 Tightening torque: 10 N m / 7.37 lb-ft

C2P63E / Power clamp - NAAMS Std - 63 mm bore

WEIGHT 3.5 kg



* DIMENSIONAL TOLERANCE FOR DOWEL HOLES: ±0.02
DIMENSIONAL TOLERANCE FOR THREADED HOLES: ±0.1

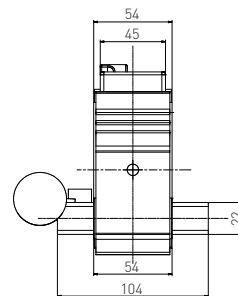
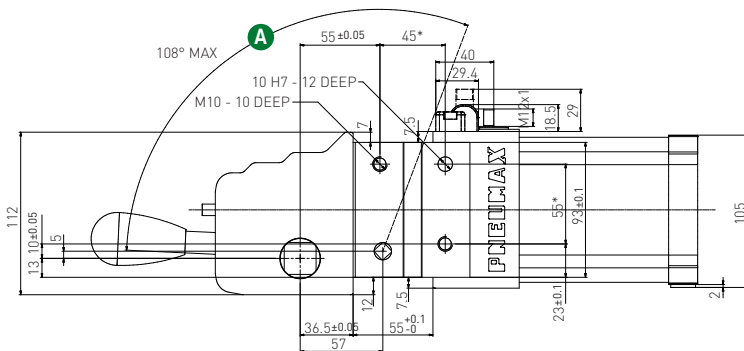
REV. 00 - 31/03/2015

CLAMPING

C2D263E / Power clamp - NAAMS Std - 63 mm bore with manual operation

WEIGHT 4 kg

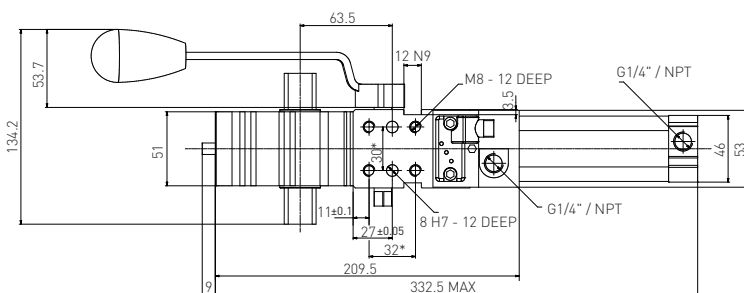
D2 handle included



Handle swivel angle

| Arm opening angle | Handle swivel angle (A) |
|-------------------|-------------------------|
| 0° | 2.65° |
| 15° | 26.35° |
| 30° | 41.38° |
| 45° | 56° |
| 60° | 70.38° |
| 75° | 83.43° |
| 90° | 94° |
| 105° | 102° |
| 120° | 107° |
| 135° | 110.7° |

Max Hand Force: 200 N



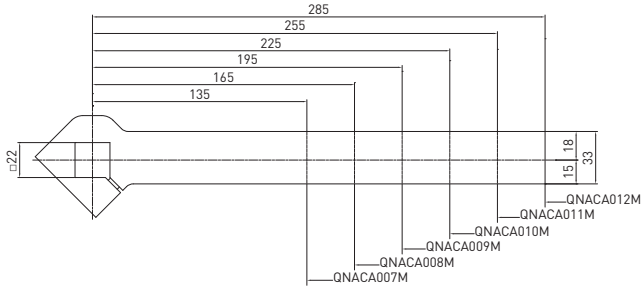
* DIMENSIONAL TOLERANCE FOR DOWEL HOLES: ±0.02
DIMENSIONAL TOLERANCE FOR THREADED HOLES: ±0.1

REV. 00 - 17/06/2015

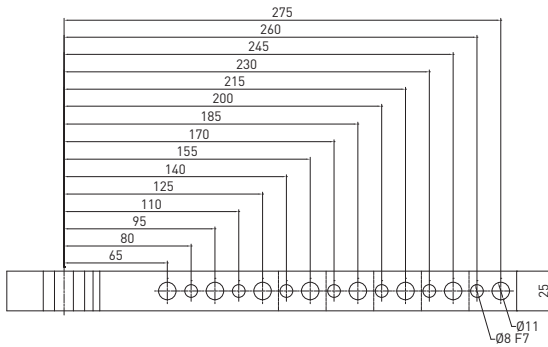
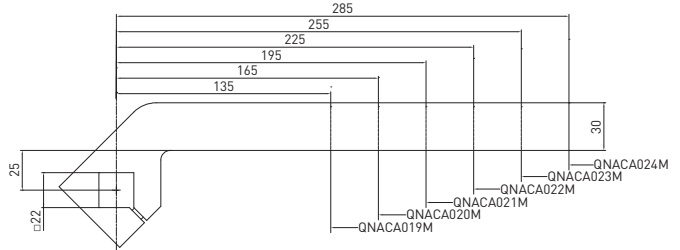
Clamping arms / 22 mm shaft - NAAMS Std

REV 02 - 29/03/2019

0 mm OFFSET



25 mm OFFSET



22 mm shaft – 0 mm offset



| Part no. | Material | Length (mm) | Weight (kg) | Max op. angle pos. 1 | Max op. angle pos. 2 | Max op. angle pos. 3 | Max op. angle pos. 4 |
|-----------|----------|-------------|-------------|----------------------|----------------------|----------------------|----------------------|
| QNACA007M | Steel | 135 | 0.72 | 135° | 135° | 135° | 135° |
| QNACA008M | Steel | 165 | 0.83 | 135° | 135° | 135° | 135° |
| QNACA009M | Steel | 195 | 0.94 | 135° | 135° | 135° | 135° |
| QNACA010M | Steel | 225 | 1.05 | 135° | 135° | 135° | 135° |
| QNACA011M | Steel | 255 | 1.16 | 135° | 135° | 135° | 135° |
| QNACA012M | Steel | 285 | 1.28 | 135° | 135° | 135° | 135° |

Screws: M8X25 Tightening torque: 25 N m / 18.43 lb ft

22 mm shaft – 25 mm offset

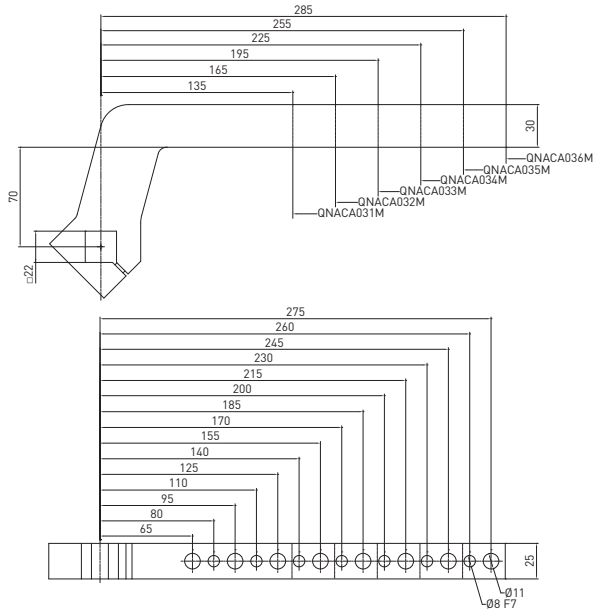


| Part no. | Material | Length (mm) | Weight (kg) | Max op. angle pos. 1 | Max op. angle pos. 2 | Max op. angle pos. 3 | Max op. angle pos. 4 |
|-----------|----------|-------------|-------------|----------------------|----------------------|----------------------|----------------------|
| QNACA019M | Steel | 135 | 0.84 | 135° | 135° | 135° | 135° |
| QNACA020M | Steel | 165 | 0.95 | 135° | 135° | 135° | 135° |
| QNACA021M | Steel | 195 | 1.05 | 135° | 135° | 135° | 135° |
| QNACA022M | Steel | 225 | 1.16 | 135° | 135° | 135° | 135° |
| QNACA023M | Steel | 255 | 1.26 | 135° | 135° | 135° | 135° |
| QNACA024M | Steel | 285 | 1.37 | 135° | 135° | 135° | 135° |

Screws: M8X25 Tightening torque: 25 N m / 18.43 lb ft

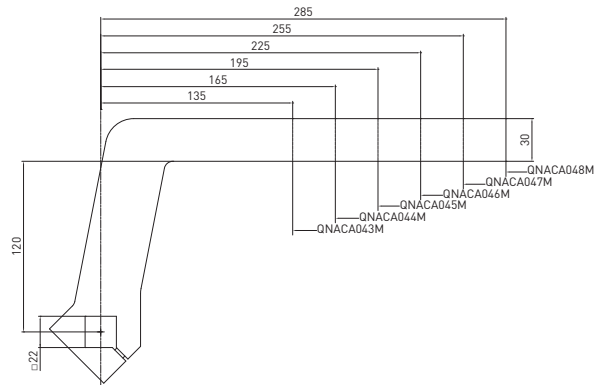
Clamping arms / 22 mm shaft - NAAMS Std

70 mm OFFSET



120 mm OFFSET

REV 01 - 29/03/2019



22 mm shaft – 70 mm offset



| Part no. | Material | Length (mm) | Weight (kg) | Max op. angle pos. 1 | Max op. angle pos. 2 | Max op. angle pos. 3 | Max op. angle pos. 4 |
|-----------|----------|-------------|-------------|----------------------|----------------------|----------------------|----------------------|
| QNACA031M | Steel | 135 | 1.05 | 135° | 135° | 135° | 135° |
| QNACA032M | Steel | 165 | 1.16 | 135° | 135° | 135° | 135° |
| QNACA033M | Steel | 195 | 1.27 | 135° | 135° | 135° | 135° |
| QNACA034M | Steel | 225 | 1.38 | 135° | 135° | 135° | 135° |
| QNACA035M | Steel | 255 | 1.49 | 135° | 135° | 135° | 135° |
| QNACA036M | Steel | 285 | 1.6 | 135° | 135° | 135° | 135° |

Screws: M8X25 Tightening torque: 25 N m / 18.43 lb ft

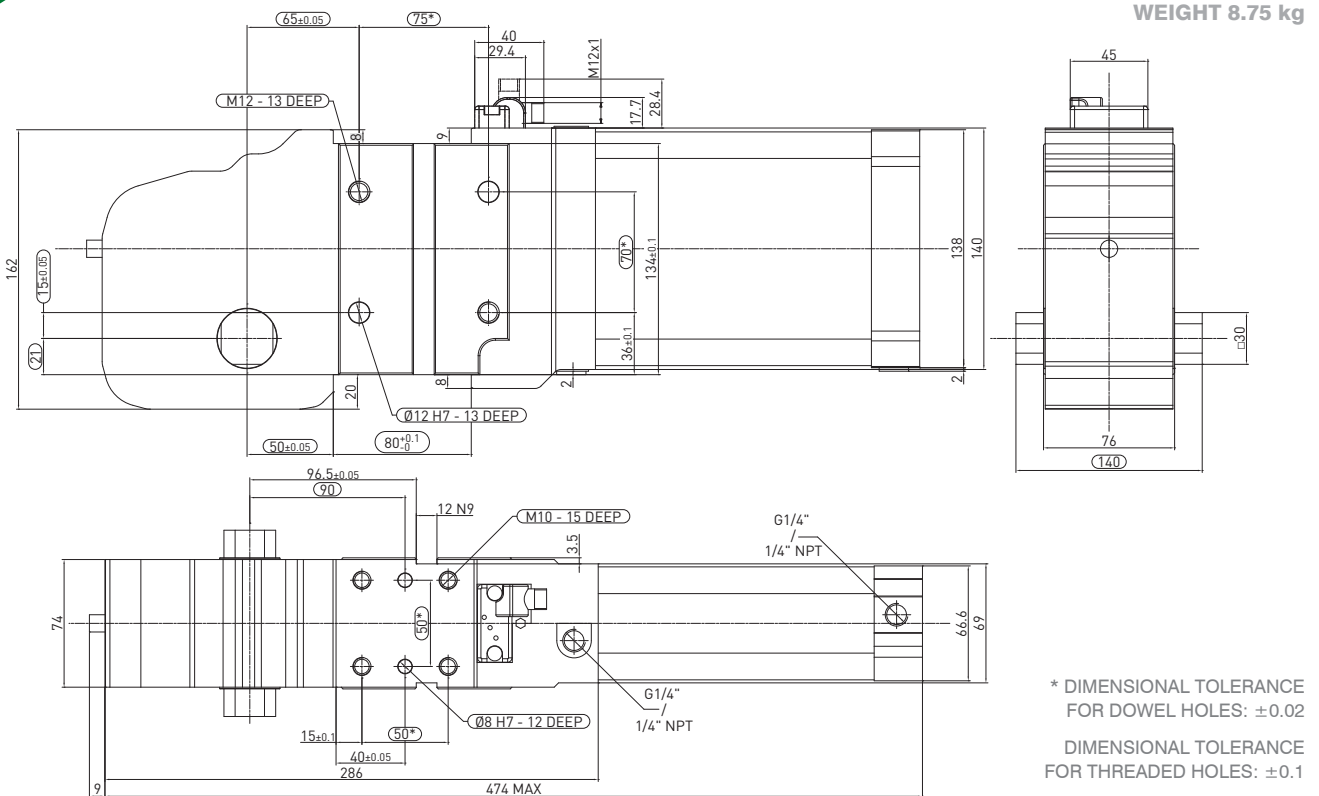
22 mm shaft – 120 mm offset



| Part no. | Material | Length (mm) | Weight (kg) | Max op. angle pos. 1 | Max op. angle pos. 2 | Max op. angle pos. 3 | Max op. angle pos. 4 |
|-----------|----------|-------------|-------------|----------------------|----------------------|----------------------|----------------------|
| QNACA043M | Steel | 135 | 1.27 | 135° | 135° | 135° | 135° |
| QNACA044M | Steel | 165 | 1.37 | 135° | 135° | 135° | 135° |
| QNACA045M | Steel | 195 | 1.48 | 135° | 135° | 135° | 135° |
| QNACA046M | Steel | 225 | 1.58 | 135° | 135° | 135° | 135° |
| QNACA047M | Steel | 255 | 1.69 | 135° | 135° | 135° | 135° |
| QNACA048M | Steel | 285 | 1.8 | 135° | 135° | 135° | 135° |

Screws: M8X25 Tightening torque: 25 N m / 18.43 lb ft

C2P80E / Power clamp - NAAMS Std - 80 mm bore



* DIMENSIONAL TOLERANCE FOR DOWEL HOLES: ±0.02
DIMENSIONAL TOLERANCE FOR THREADED HOLES: ±0.1

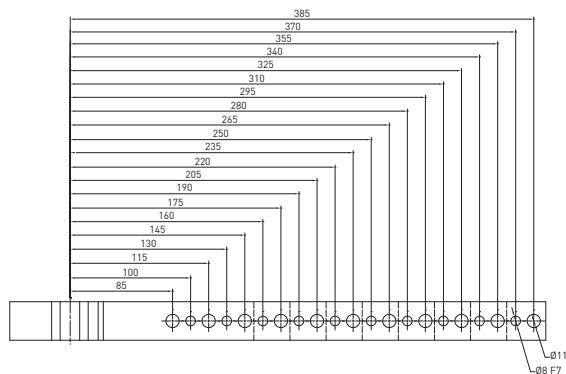
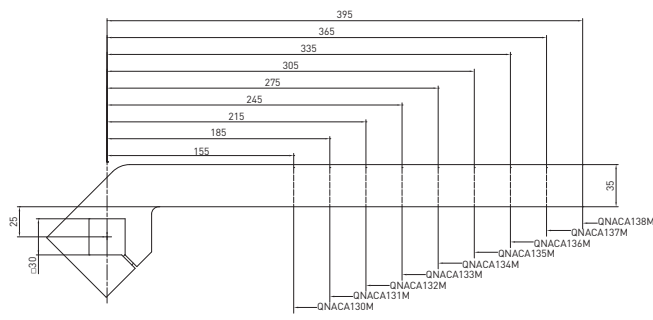
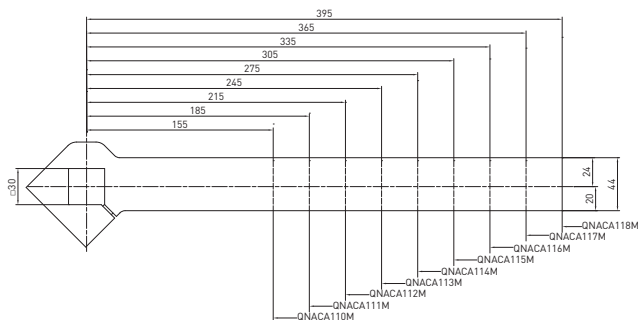
REV. 00 - 31/07/2015

Clamping arms / 30 mm shaft - NAAMS Std

REV 01 - 29/03/2019

0 mm OFFSET

25 mm OFFSET



30 mm shaft – 0 mm offset

| Part no. | Material | Length (mm) | Weight (kg) | Max op. angle pos. 1 | Max op. angle pos. 2 | Max op. angle pos. 3 | Max op. angle pos. 4 |
|-----------|----------|-------------|-------------|----------------------|----------------------|----------------------|----------------------|
| QNACA110M | Steel | 155 | 1.41 | 135° | 135° | 135° | 135° |
| QNACA111M | Steel | 185 | 1.58 | 135° | 135° | 135° | 135° |
| QNACA112M | Steel | 215 | 1.76 | 135° | 135° | 135° | 135° |
| QNACA113M | Steel | 245 | 1.93 | 135° | 135° | 135° | 135° |
| QNACA114M | Steel | 275 | 2.1 | 135° | 135° | 135° | 135° |
| QNACA115M | Steel | 305 | 2.27 | 135° | 135° | 135° | 135° |
| QNACA116M | Steel | 335 | 2.45 | 135° | 135° | 135° | 135° |
| QNACA117M | Steel | 365 | 2.62 | 135° | 135° | 135° | 135° |
| QNACA118M | Steel | 395 | 2.8 | 135° | 135° | 135° | 135° |

Screws: M10x40 Tightening torque: 35 N m / 25.81 lb ft

30 mm shaft – 25 mm offset

| Part no. | Material | Length (mm) | Weight (kg) | Max op. angle pos. 1 | Max op. angle pos. 2 | Max op. angle pos. 3 | Max op. angle pos. 4 |
|-----------|----------|-------------|-------------|----------------------|----------------------|----------------------|----------------------|
| QNACA130M | Steel | 155 | 1.24 | 135° | 135° | 135° | 135° |
| QNACA131M | Steel | 185 | 1.39 | 135° | 135° | 135° | 135° |
| QNACA132M | Steel | 215 | 1.54 | 135° | 135° | 135° | 135° |
| QNACA133M | Steel | 245 | 1.69 | 135° | 135° | 135° | 135° |
| QNACA134M | Steel | 275 | 1.84 | 135° | 135° | 135° | 135° |
| QNACA135M | Steel | 305 | 2 | 135° | 135° | 135° | 135° |
| QNACA136M | Steel | 335 | 2.14 | 135° | 135° | 135° | 135° |
| QNACA137M | Steel | 365 | 2.29 | 135° | 135° | 135° | 135° |
| QNACA138M | Steel | 395 | 2.45 | 135° | 135° | 135° | 135° |

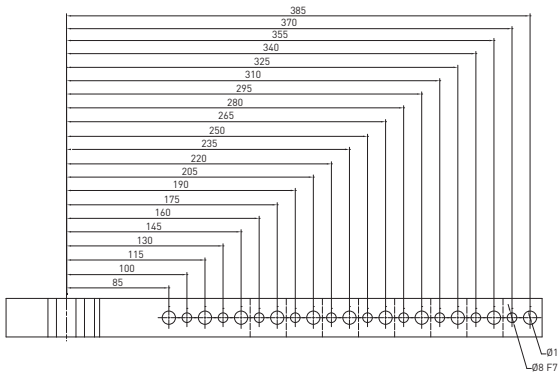
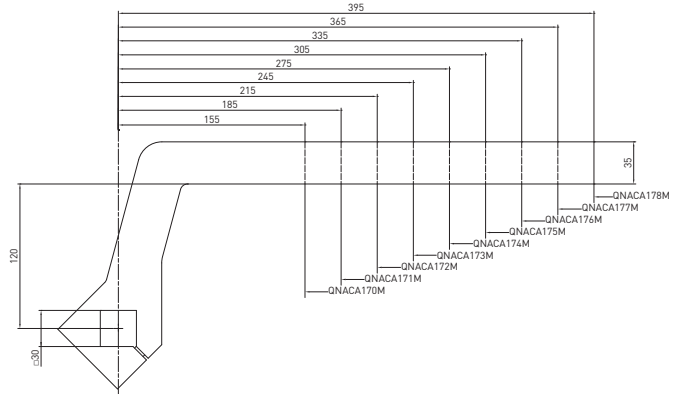
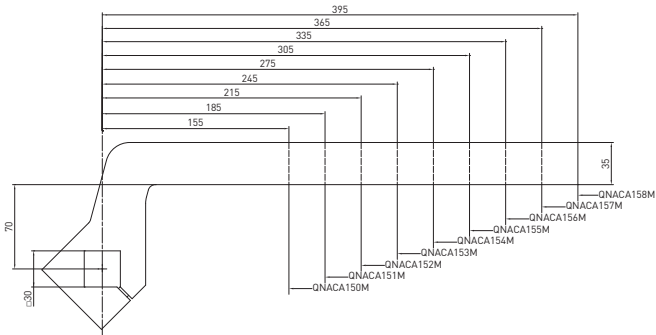
Screws: M10x40 Tightening torque: 35 N m / 25.81 lb ft

Clamping arms / 30 mm shaft - NAAMS Std

REV 01 - 29/03/2019

70 mm OFFSET

120 mm OFFSET



CLAMPING

30 mm shaft – 70 mm offset

| Part no. | Material | Length (mm) | Weight (kg) | Max op. angle pos. 1 | Max op. angle pos. 2 | Max op. angle pos. 3 | Max op. angle pos. 4 |
|-----------|----------|-------------|-------------|----------------------|----------------------|----------------------|----------------------|
| QNACA150M | Steel | 155 | 1.7 | 135° | 135° | 135° | 135° |
| QNACA151M | Steel | 185 | 1.85 | 135° | 135° | 135° | 135° |
| QNACA152M | Steel | 215 | 2 | 135° | 135° | 135° | 135° |
| QNACA153M | Steel | 245 | 2.15 | 135° | 135° | 135° | 135° |
| QNACA154M | Steel | 275 | 2.3 | 135° | 135° | 135° | 135° |
| QNACA155M | Steel | 305 | 2.45 | 135° | 135° | 135° | 135° |
| QNACA156M | Steel | 335 | 2.6 | 135° | 135° | 135° | 135° |
| QNACA157M | Steel | 365 | 2.76 | 135° | 135° | 135° | 135° |
| QNACA158M | Steel | 395 | 2.92 | 135° | 135° | 135° | 135° |

Screws: M10x40 Tightening torque: 35 N m / 25.81 lb ft

30 mm shaft – 120 mm offset

| Part no. | Material | Length (mm) | Weight (kg) | Max op. angle pos. 1 | Max op. angle pos. 2 | Max op. angle pos. 3 | Max op. angle pos. 4 |
|-----------|----------|-------------|-------------|----------------------|----------------------|----------------------|----------------------|
| QNACA170M | Steel | 155 | 1.97 | 135° | 135° | 135° | 135° |
| QNACA171M | Steel | 185 | 2.12 | 135° | 135° | 135° | 135° |
| QNACA172M | Steel | 215 | 2.27 | 135° | 135° | 135° | 135° |
| QNACA173M | Steel | 245 | 2.42 | 135° | 135° | 135° | 135° |
| QNACA174M | Steel | 275 | 2.57 | 135° | 135° | 135° | 135° |
| QNACA175M | Steel | 305 | 2.72 | 135° | 135° | 135° | 135° |
| QNACA176M | Steel | 335 | 2.87 | 135° | 135° | 135° | 135° |
| QNACA177M | Steel | 365 | 3.02 | 135° | 135° | 135° | 135° |
| QNACA178M | Steel | 395 | 3.19 | 135° | 135° | 135° | 135° |

Screws: M10x40 Tightening torque: 35 N m / 25.81 lb ft