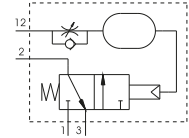
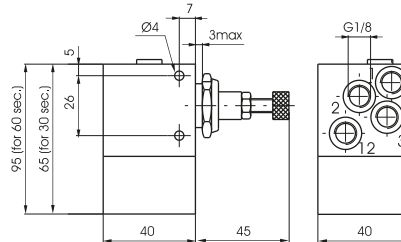


Pneumatic timer N.C. - G 1/8"

Coding: 900.18.T

Operational characteristics	
Fluid	Filtered air. No lubrication needed, if applied it shall be continuous
Max working pressure (bar)	3 ± 10
Temperature °C	-5 ± +70
Flow rate at 6 bar with Δp=1 (NI/min)	130
Orifice size (mm)	2.5

TIME	
① 3 =	0 ÷ 30 sec.
3-60 =	0 ÷ 60 sec.



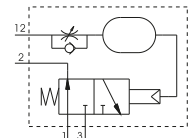
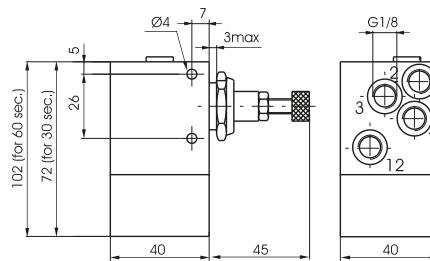
Weight 290 (30 sec.) g
weight 350 g (60 sec.)

Pneumatic timer N.O. - G 1/8"

Coding: 900.18.T

Operational characteristics	
Fluid	Filtered air. No lubrication needed, if applied it shall be continuous
Max working pressure (bar)	4 ± 10
Temperature °C	-5 ± +70
Flow rate at 6 bar with Δp=1 (NI/min)	130
Orifice size (mm)	2.5

TIME	
① 4 =	0 ÷ 30 sec.
4-60 =	0 ÷ 60 sec.

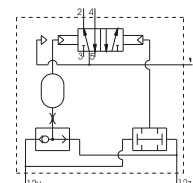
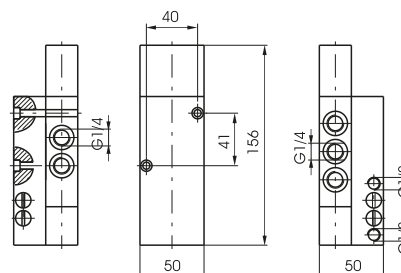


Weight 320 (30 sec.) g
weight 380 g (60 sec.)

Two hands safety valve G 1/4"

Coding: 900.52.1.1

Operational characteristics	
Fluid	Filtered air. No lubrication needed, if applied it shall be continuous
Max working pressure (bar)	10
Temperature °C	-5 ± +70
Flow rate at 6 bar with Δp=1 (NI/min)	1030
Orifice size (mm)	7
Working ports size	G1/4"
Pilot ports size	G1/8"

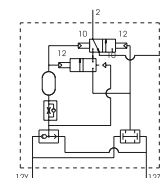
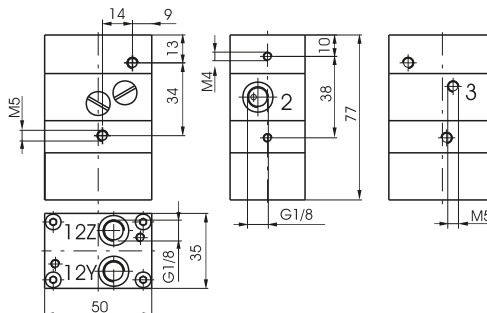


Weight 780 g

Two hands safety valve III A class certification (according to EN 574 standard)

Coding: 900.18.9

Operational characteristics	
Fluid	Filtered air. No lubrication needed, if applied it shall be continuous
Max working pressure (bar)	3 ÷ 8
Temperature °C	-5 ÷ +70
Flow rate at 6 bar with Δp=1 (NI/min)	40
Orifice size (mm)	2.5
Working ports size	G1/8"
Pilot ports size	G1/8"

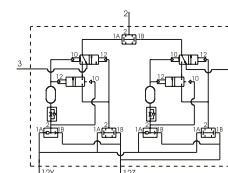
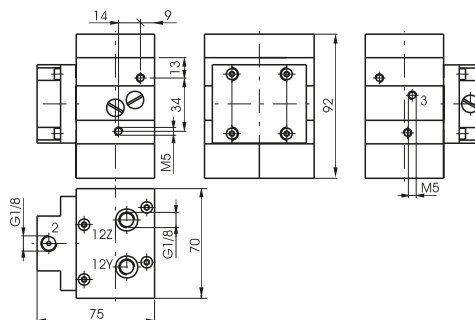


Weight 340 g

Two hands safety valve III B class certification (according to EN 574 standard)

Coding: 900.18.10

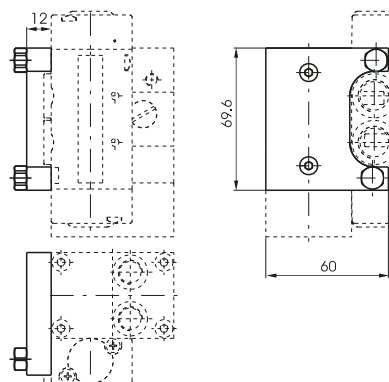
Operational characteristics	
Fluid	Filtered air. No lubrication needed, if applied it shall be continuous
Max working pressure (bar)	3 ÷ 8
Temperature °C	-5 ÷ +70
Flow rate at 6 bar with Δp=1 (NI/min)	40
Orifice size (mm)	2.5
Working ports size	G1/8"
Pilot ports size	G1/8"



Weight 980 g

Power valve adaptor (Series 2400)

Coding: 900.18.11



Weight 75 g