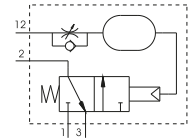
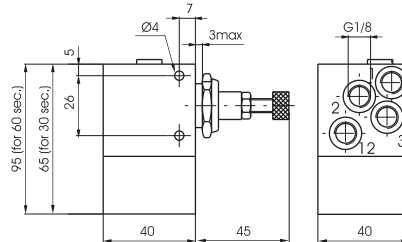


Pneumatic timer N.C. - G 1/8"

Coding: 900.18.T

| Operational characteristics | |
|---------------------------------------|--|
| Fluid | Filtered air. No lubrication needed, if applied it shall be continuous |
| Max working pressure (bar) | 3 ÷ 10 |
| Temperature °C | -5 ÷ +70 |
| Flow rate at 6 bar with Δp=1 (NI/min) | 130 |
| Orifice size (mm) | 2.5 |

| TIME | |
|--------|-------------|
| ① 3 = | 0 ÷ 30 sec. |
| 3-60 = | 0 ÷ 60 sec. |



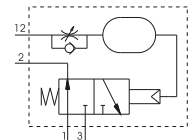
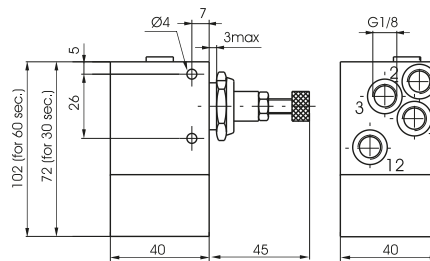
Weight 290 (30 sec.) g
weight 350 g (60 sec.)

Pneumatic timer N.O. - G 1/8"

Coding: 900.18.T

| Operational characteristics | |
|---------------------------------------|--|
| Fluid | Filtered air. No lubrication needed, if applied it shall be continuous |
| Max working pressure (bar) | 4 ÷ 10 |
| Temperature °C | -5 ÷ +70 |
| Flow rate at 6 bar with Δp=1 (NI/min) | 130 |
| Orifice size (mm) | 2.5 |

| TIME | |
|--------|-------------|
| ① 4 = | 0 ÷ 30 sec. |
| 4-60 = | 0 ÷ 60 sec. |

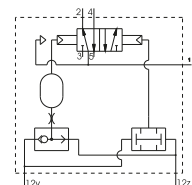
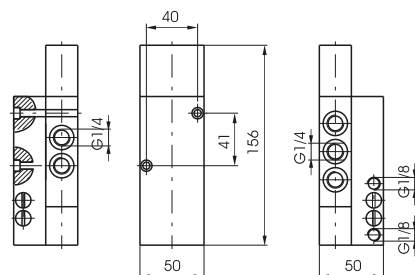


Weight 320 (30 sec.) g
weight 380 g (60 sec.)

Two hands safety valve G 1/4"

Coding: 900.52.1.1

| Operational characteristics | |
|---------------------------------------|--|
| Fluid | Filtered air. No lubrication needed, if applied it shall be continuous |
| Max working pressure (bar) | 10 |
| Temperature °C | -5 ÷ +70 |
| Flow rate at 6 bar with Δp=1 (NI/min) | 1030 |
| Orifice size (mm) | 7 |
| Working ports size | G1/4" |
| Pilot ports size | G1/8" |



Weight 780 g