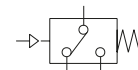
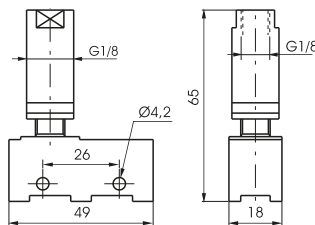


► Pressure switch G 1/8" - screw connections

Coding: 900.18.1-**P**

Operational characteristics	
Fluid	Filtered air. No lubrication needed, if applied it shall be continuous
Max working pressure (bar)	10
Temperature °C	-5 ÷ +70
Flow rate microswitch	13 (3) A to 220V~
Pilot ports size	G1/8"

PRESSURE	
<b>P</b>	1 = Min. switch pressure 1 bar
	4 = Min. switch pressure 4 bar



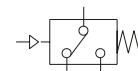
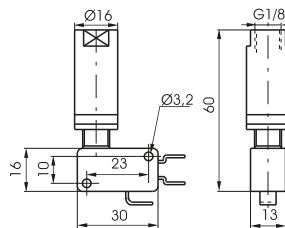
Weight 75 g

► Pressure switch G 1/8" - spade connections

Coding: 900.18.1/**P**

Operational characteristics	
Fluid	Filtered air. No lubrication needed, if applied it shall be continuous
Max working pressure (bar)	10
Temperature °C	-5 ÷ +70
Flow rate microswitch	16 (5) A to 220V~
Pilot ports size	G1/8"

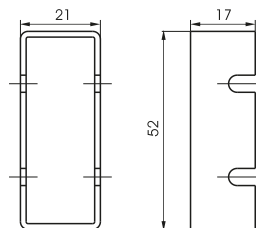
PRESSURE	
<b>P</b>	1 = Min. switch pressure 1 bar
	4 = Min. switch pressure 4 bar



Weight 60 g

► Switch protection

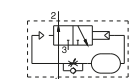
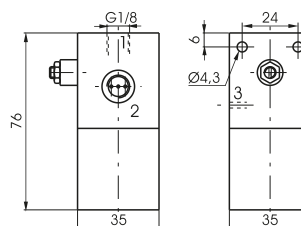
Coding: 900.18.0



Weight 6 g

► Impulse generator

Coding: 900.18.2N



Weight 325 g