

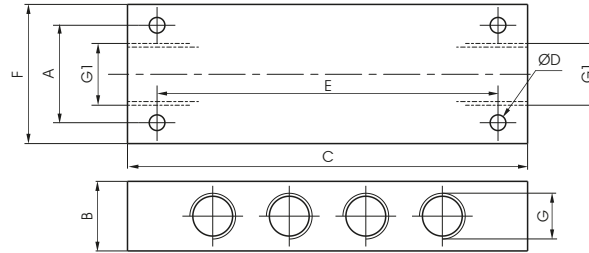


Manifold 10 ports

Coding: 6.08.Ⓒ/8

| Operational characteristics | |
|-----------------------------|--|
| Fluid | Filtered air. No lubrication needed, if applied it shall be continuous |
| Max working pressure (bar) | 20 |
| Temperature °C | -5 ÷ +70 |

| WORKING PORTS SIZE | |
|--------------------|---------|
| 05 | = M5 |
| 18 | = G1/8" |
| 14 | = G1/4" |
| 38 | = G3/8" |
| 12 | = G1/2" |



| G | M5 | 1/8" | 1/4" | 3/8" | 1/2" |
|----------|-------|------|------|------|------|
| G1 | G1/8" | 1/8" | 1/4" | 3/8" | 1/2" |
| A | 16 | 20 | 28 | 28 | 36 |
| B | 12 | 18 | 20 | 20 | 30 |
| C | 60 | 90 | 115 | 130 | 170 |
| ØD | 3,3 | 4,5 | 4,5 | 5,5 | 5,5 |
| E | 50 | 75 | 98 | 112 | 150 |
| F | 22 | 32 | 40 | 40 | 50 |
| Weight g | 92 | 110 | 185 | 165 | 460 |

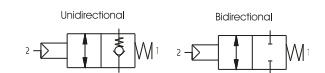
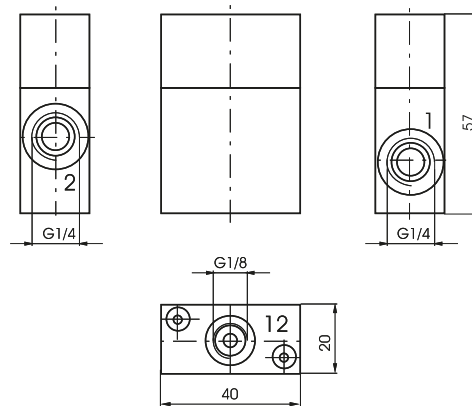
Weight *see table"

Block valve G1/4"

Coding: 6.09.14.Ⓕ

| Operational characteristics | |
|---------------------------------------|--|
| Fluid | Filtered air. No lubrication needed, if applied it shall be continuous |
| Max working pressure (bar) | 10 |
| Maximum piloting pressure (bar) | 4 |
| Temperature °C | -5 ÷ +70 |
| Flow rate at 6 bar with Δp=1 (NI/min) | 700 |
| Orifice size (mm) | 7 |

| FUNCTION | |
|----------|------------------|
| UN | = Unidirectional |
| BN | = Bidirectional |



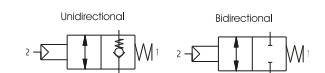
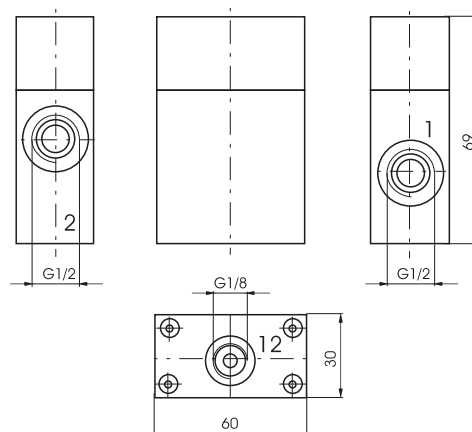
Weight 122 g

Block valve G1/2"

Coding: 6.09.12.Ⓕ

| Operational characteristics | |
|---------------------------------------|--|
| Fluid | Filtered air. No lubrication needed, if applied it shall be continuous |
| Max working pressure (bar) | 10 |
| Maximum piloting pressure (bar) | 4 |
| Temperature °C | -5 ÷ +70 |
| Flow rate at 6 bar with Δp=1 (NI/min) | 2000 |
| Orifice size (mm) | 12 |

| FUNCTION | |
|----------|------------------|
| UN | = Unidirectional |
| BN | = Bidirectional |



Weight 305 g

AIR DISTRIBUTION

1