

► Multimount cylinders



Ordering code

6500.Ø.stroke. 1 .

10	= non magnetic M = magnetic
16	
20	
25	

Construction characteristics

Body	anodised aluminium
Piston rod	stainless steel
Piston	brass
Rods bushing	sinterize bronze
End plate	anodised aluminium
Cushioning washer	PUR
Seal	oil resistant NBR rubber

Technical characteristics

Fluid	Filtered air. No lubrication needed, if applied it shall be continuous.
Minimum working pressure	0.6 bar (for bore Ø10 - Ø16) 0.5 bar (for bore Ø20 - Ø32)
Max pressure	7 bar
Operating temperature	-5°C - +70°C
Cushioning	with elastic bumper
Stroke tolerance	+1 / 0 mm
Piston speed	50 - 500 mm/sec (without load)

Standard stroke

Bore	Stroke							
	5	10	15	20	25	30	40	50
Ø10	●	●	●	●	●	●		
Ø16	●	●	●	●	●	●		
Ø20	●	●	●	●	●	●	●	●
Ø25	●	●	●	●	●	●	●	●

Overall dimensions

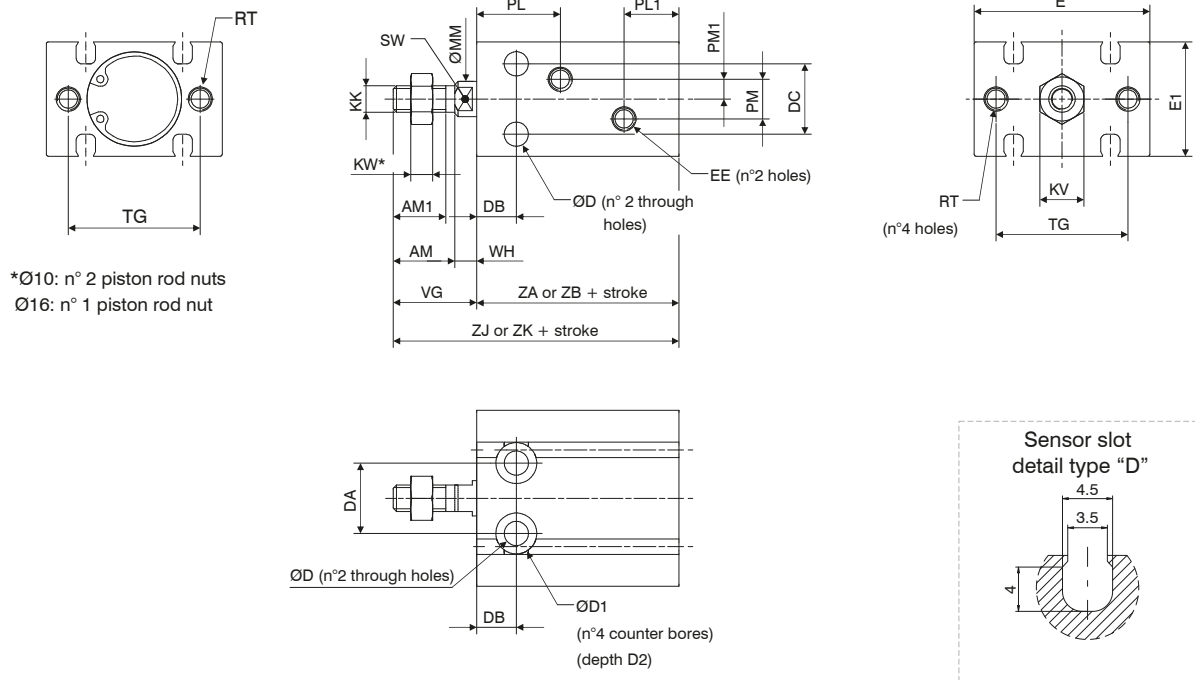


Table of dimensions

	Bore			
	Ø10	Ø16	Ø20	Ø25
AM	/	12,5	14	18
AM1	10	11	12	15,5
ØD	Ø3,2	Ø4,5	Ø5,5	Ø5,5
ØD1	Ø6	Ø7,6	Ø9,3	Ø9,3
D2	5	6,5	8	9
DA	11	14	16	20
DB	7	7	9	10
DC	9	12	16	20
E	24	32	40	50
E1	15	20	26	32
EE	M5	M5	M5	M5
KK	M4	M5	M6	M8
KV	7	8	10	13
KW	3	4	5	5
ØMM	Ø4	Ø6	Ø8	Ø10
PL	16,5	16,5	19	21,5
PL1	10	11,5	12,5	13
PM	/	4	9	9
PM1	/	2	4,5	4,5
RT	M3 (useful depth 5)	M4 (useful depth 6)	M5 (useful depth 8)	M5 (useful depth 8)
SW	/	5	6	8
TG	18	25	30	38
VG	16	16	19	23
WH	/	3,5	5	5
ZA	magnetic	36	40	46
ZB	non magnetic	36	30	36
ZJ	magnetic	52	56	65
ZK	non magnetic	52	46	55
Weight (g)				
Stroke 0	32	44	84	159
every 5 mm	4	6	11	17