

Series 1500 - Short stroke compact cylinders

General

Profiled tube has three "T" slots on the three sides hosting sensors 1500._, RS._, HS._ without adaptors and with adaptor code 1380.01F codes 1580._, MRS._, MHS._.

A complete range of clamps makes them easy to install under any conditions.

It is interesting to note that as these cylinders (from Ø 32 to Ø 100) have anchoring holes with the same lead and thread as those of series 1320 ISO 6431, they accept all mountings except for the intermediate trunnion.

Construction characteristics

Body	anodised aluminium
Rod	C43 chromed steel (stainless steel for magnetic cylinder Ø20 and Ø25)
Piston	aluminium
Rod bushing	anodised aluminium
End cap	anodised aluminium
Seals	Standard: NBR oil resistant rubber, PUR piston rod seals (HNBR or FPM seals available upon request)

Operational characteristics

Fluid	Filtered air. No lubrication needed, if applied it shall be continuous.
Max. pressure	10 bar
Working temperature	-5°C - +70°C with standard seals magnetic or non magnetic piston -5°C - +80°C with FPM seals magnetic piston -5°C - +80°C with HNBR seals magnetic piston -5°C - +120°C with HNBR seals non magnetic piston -5°C - +150°C with FPM seals non magnetic piston

Please follow the suggestions below to ensure a long life for these cylinders:

- use clean and lubricated air
- correct alignment during assembly with regard to the applied load so as to avoid radial components or bending the rod.
- avoid high speeds together with long strokes and heavy loads: this would produce kinetic energy which the cylinder cannot absorb, especially if used as a limit stop (in this case use mechanical stop device)
- evaluate the environmental characteristics of cylinder used (high temperature, hard atmosphere, dust, humidity etc.)

Please note: air must be dried for applications with lower temperature.

Use hydraulic oils H class (ISO VG32) for correct continued lubrication.

Our Technical Department will be glad to help.

Standard strokes

Double acting version

Series 1501, 1504, 1511, 1514, 1515, 1516, 1517 and 1518

for all bores from 5 to 50 mm every 5 mm.

On request are available strokes as follow:

Ø 20 and Ø25 up to stroke 250 mm

Ø 32 e Ø 40 up to stroke 300 mm

Ø 50 e Ø 63 up to stroke 350 mm

Ø 80 e Ø 100 up to stroke 400 mm

Single acting version

Series 1502, 1503, 1512 and 1513:

For all bores from 5 to 10 mm.

On request are available strokes up to 50 mm

Type with non-rotating device:

Ø 20 and Ø 25 from 5 to 40 mm every 5 mm.

Ø 32 and Ø 40 from 5 to 50 mm every 5 mm.

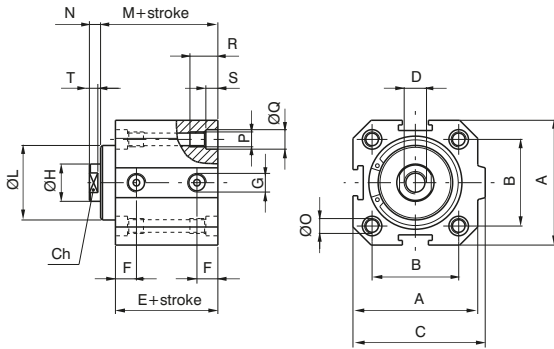
Ø 50 and Ø 63 from 5 to 60 mm every 5 mm.

Ø 80 and Ø 100 from 5 to 80 mm every 5 mm.

Double acting version

Ordering code

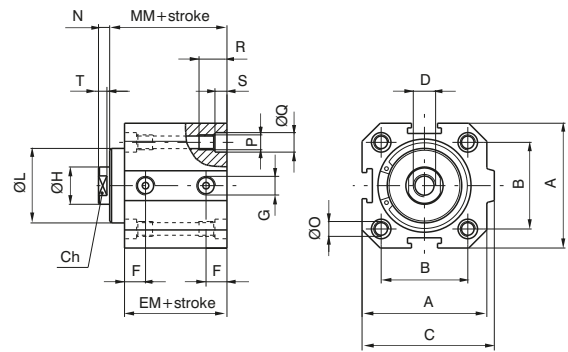
1501.Ø.stroke standard seals
1501.Ø.stroke.V FPM seals
1501.Ø.stroke.T HNBR seals



Double acting version with magnetic piston

Ordering code

1511.Ø.stroke standard seals
1511.Ø.stroke.V FPM seals
1511.Ø.stroke.T HNBR seals



PNEUMATIC ACTUATION

Bore	20	25	32	40	50	63	80	100
A	35	41	48	57	67	80	100	120
B	26	28	32,5	38	46,5	56,5	72	89
C	39,5	44,5	52	61	71	84	106	126
D	M4x8	M5x10	M6x12	M10x15	M12x18	M12x18	M16x20	M16x20
E	29	30,5	32	33,5	35	38	44	47
EM	34	35,5	37	38,5	40	43	49	52
F	9	9,15	9,75	10,5	11	11,25	13,75	15,25
G	G 1/8"	G 1/8"	G 1/8"	G 1/8"	G 1/8"	G 1/8"	G 3/8"	G 3/8"
Ø H	8	10	12	16	20	20	25	25
Ø L ±0,05 (0,1 per Ø80 e Ø 100)	17	20,5	26	31	39	40	55	55
M	32	33	35,5	39,5	43	46	51,5	54,5
MM	37	38	40,5	44,5	48	51	56,5	59,5
N	4	4	4	5	6	6	8	8
Ø O	4,3	5,3	5,3	5,3	7	7	9	9
P	M5	M6	M6	M6	M8	M8	M10	M10
Ø Q	7,5	8,5	8,5	8,5	10,5	10,5	13,5	13,5
R	15	18	18	18	22	22	30	30
S	4,5	5,5	5,5	5,5	6,5	6,5	8,5	8,5
T	3	3	3	4	4,5	4,5	5,5	5,5
Ch	6	8	10	13	17	17	22	22

Non magnetic

Weight	stroke 0	75	110	170	260	400	600	800	1500
	every 10 mm.	20	30	40	60	80	100	120	145

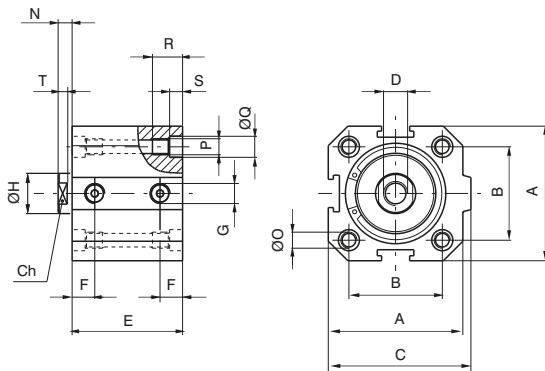
Magnetic

Weight	stroke 0	90	130	200	310	460	700	910	1620
	every 10 mm.	20	30	40	60	80	100	120	145

► Single acting version with front spring

Ordering code

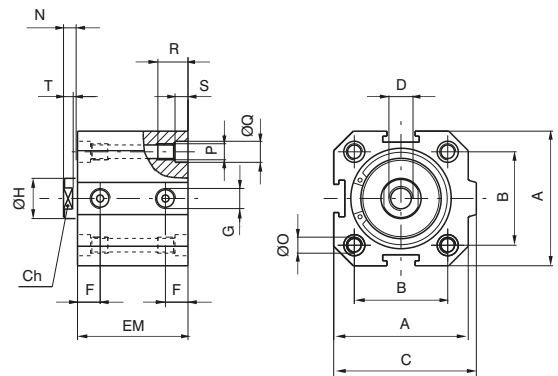
1502.Ø.stroke standard seals
1502.Ø.stroke.V FPM seals
1502.Ø.stroke.T HNBR seals



► Single acting version front spring with magnetic piston

Ordering code

1512.Ø.stroke standard seals
1512.Ø.stroke.V FPM seals
1512.Ø.stroke.T HNBR seals



3

PNEUMATIC ACTUATION

Bore		20	25	32	40	50	63	80	100
A		35	41	48	57	67	80	100	120
B		26	28	32,5	38	46,5	56,5	72	89
C		39,5	44,5	52	61	71	84	106	126
D		M4X8	M5X10	M6X12	M10X15	M12X18	M12X18	M16X20	M16X20
E	stroke 5	29	30,5	32	33,5	35	38	44	47
	stroke 10	34	35,5	37	38,5	40	43	49	52
EM	stroke 5	34	35,5	37	38,5	40	43	49	52
	stroke 10	39	40,5	42	43,5	45	48	54	57
F		9	9,15	9,75	10,5	11	11,25	13,75	15,25
G		G 1/8"	G 1/8"	G 1/8"	G 1/8"	G 1/8"	G 1/8"	G 3/8"	G 3/8"
Ø H		8	10	12	16	20	20	25	25
N		4	4	4	5	6	6	8	8
Ø O		4,3	5,3	5,3	5,3	7	7	9	9
P		M5	M6	M6	M6	M8	M8	M10	M10
Ø Q		7,5	8,5	8,5	8,5	10,5	10,5	13,5	13,5
R		15	18	18	18	22	22	30	30
S		4,5	5,5	5,5	5,5	6,5	6,5	8,5	8,5
T		3	3	3	4	4,5	4,5	5,5	5,5
Ch		6	8	10	13	17	17	22	22

Non magnetic

Weight g	stroke 5	70	105	160	250	370	550	750	1440
	stroke 10	80	120	180	280	410	600	810	1500

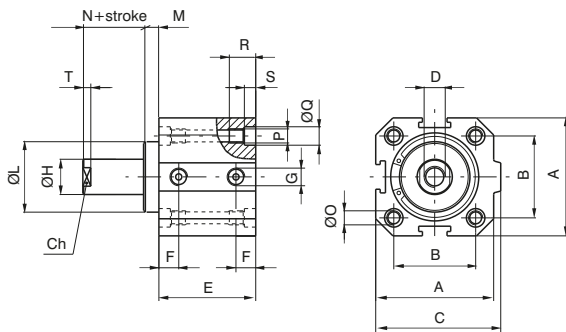
Magnetic

Weight g	stroke 5	85	125	190	300	430	650	860	1560
	stroke 10	95	140	210	330	470	700	920	1620

► **Single acting version with rear spring**

Ordering code

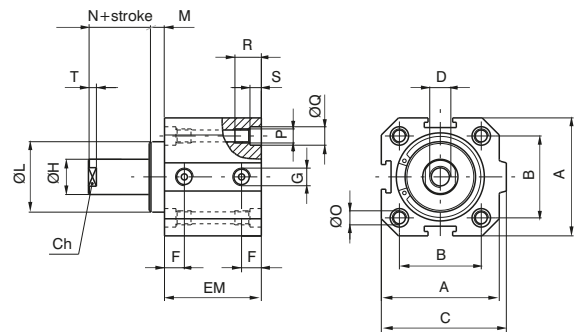
1503.Ø.stroke standard seals
1503.Ø.stroke.V FPM seals
1503.Ø.stroke.T HNBR seals



► **Single acting version rear spring with magnetic piston**

Ordering code

1513.Ø.stroke standard seals
1513.Ø.stroke.V FPM seals
1513.Ø.stroke.T HNBR seals



PNEUMATIC ACTUATION

Bore	20	25	32	40	50	63	80	100	
A	35	41	48	57	67	80	100	120	
B	26	28	32,5	38	46,5	56,5	72	89	
C	39,5	44,5	52	61	71	84	106	126	
D	M4X8	M5X10	M6X12	M10X15	M12X18	M12X18	M16X20	M16X20	
E	stroke 5	29	30,5	32	33,5	35	38	44	47
	stroke 10	34	35,5	37	38,5	40	43	49	52
EM	stroke 5	34	35,5	37	38,5	40	43	49	52
	stroke 10	39	40,5	42	43,5	45	48	54	57
F	9	9,15	9,75	10,5	11	11,25	13,75	15,25	
G	G 1/8"	G 1/8"	G 1/8"	G 1/8"	G 1/8"	G 1/8"	G 3/8"	G 3/8"	
Ø H	8	10	12	16	20	20	25	25	
Ø L ±0,05 (0,1 per Ø80 e Ø 100)	17	20,5	26	31	39	40	55	55	
M	3	2,5	3,5	6	8	8	7,5	7,5	
N	4	4	4	5	6	6	8	8	
Ø O	4,3	5,3	5,3	5,3	7	7	9	9	
P	M5	M6	M6	M6	M8	M8	M10	M10	
Ø Q	7,5	8,5	8,5	8,5	10,5	10,5	13,5	13,5	
R	15	18	18	18	22	22	30	30	
S	4,5	5,5	5,5	5,5	6,5	6,5	8,5	8,5	
T	3	3	3	4	4,5	4,5	5,5	5,5	
Ch	6	8	10	13	17	17	22	22	

Non magnetic

Weight g	stroke 5	70	105	160	250	370	550	750	1440
	stroke 10	80	120	180	280	410	600	810	1500

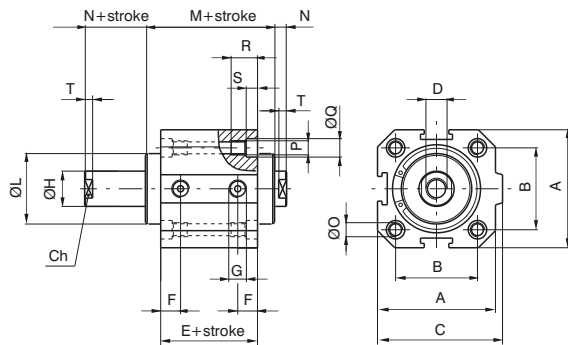
Magnetic

Weight g	stroke 5	85	125	190	300	430	650	860	1560
	stroke 10	95	140	210	330	470	700	920	1620

► Double acting through rod cylinder version

Ordering code

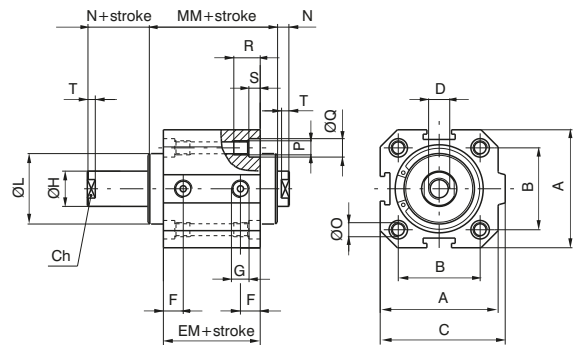
1504.Ø.stroke standard seals
1504.Ø.stroke.V FPM seals
1504.Ø.stroke.T HNBR seals



► Double acting through rod cylinder version with magnetic piston

Ordering code

1514.Ø.stroke standard seals
1514.Ø.stroke.V FPM seals
1514.Ø.stroke.T HNBR seals



Bore	20	25	32	40	50	63	80	100
A	35	41	48	57	67	80	100	120
B	26	28	32,5	38	46,5	56,5	72	89
C	39,5	44,5	52	61	71	84	106	126
D	M4X8	M5X10	M6X12	M10X15	M12X18	M12X18	M16X20	M16X20
E	29	30,5	32	33,5	35	38	44	47
EM	34	35,5	37	38,5	40	43	49	52
F	9	9,15	9,75	10,5	11	11,25	13,75	15,25
G	G 1/8"	G 1/8"	G 1/8"	G 1/8"	G 1/8"	G 1/8"	G 3/8"	G 3/8"
Ø H	8	10	12	16	20	20	25	25
Ø L ±0,05 (0,1 per Ø80 e Ø 100)	17	20,5	26	31	39	40	55	55
M	35	35,5	39	45,5	51	54	59	62
MM	40	40,5	44	50,5	56	59	64	67
N	4	4	4	5	6	6	8	8
Ø O	4,3	5,3	5,3	5,3	7	7	9	9
P	M5	M6	M6	M6	M8	M8	M10	M10
Ø Q	7,5	8,5	8,5	8,5	10,5	10,5	13,5	13,5
R	15	18	18	18	22	22	30	30
S	4,5	5,5	5,5	5,5	6,5	6,5	8,5	8,5
T	3	3	3	4	4,5	4,5	5,5	5,5
Ch	6	8	10	13	17	17	22	22

Non magnetic

Weight g	stroke 0	90	130	200	320	460	670	1100	1680
	every 10 mm.	20	35	50	70	90	110	155	185

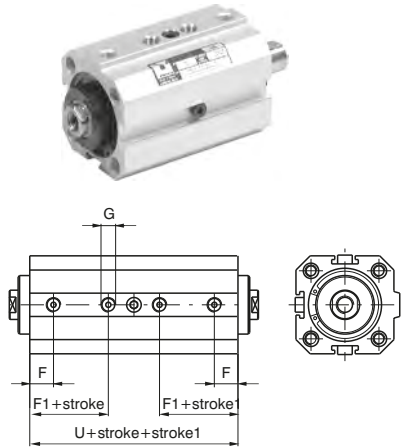
Magnetic

Weight g	stroke 0	105	160	240	380	530	740	1210	1820
	every 10 mm.	20	35	50	70	90	110	155	185

Tandem with opposed rods

Ordering code

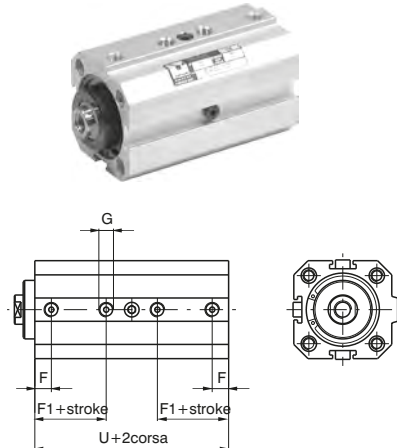
- 1515.Ø.stroke.stroke 1 standard seals
- 1515.Ø.stroke.stroke 1.V FPM seals
- 1515.Ø.stroke.stroke 1.T HNBR seals
- 1515.Ø.stroke.stroke 1.M standard seals, magnetic piston
- 1515.Ø.stroke.stroke 1.MV FPM seals, magnetic piston
- 1515.Ø.stroke.stroke 1.MT HNBR seals, magnetic piston



Tandem push with common rods

Ordering code

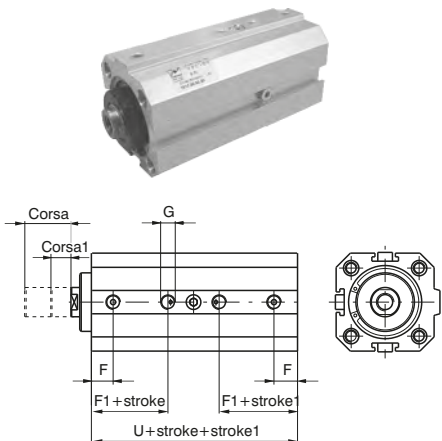
- 1516.Ø.stroke standard seals
- 1516.Ø.stroke.V FPM seals
- 1516.Ø.stroke.T HNBR seals
- 1516.Ø.stroke.M standard seals, magnetic piston
- 1516.Ø.stroke.MV FPM seals, magnetic piston
- 1516.Ø.stroke.MT HNBR seals, magnetic piston



Tandem push with independent rods

Ordering code

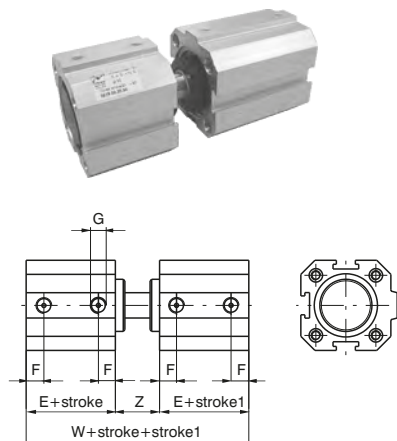
- 1517.Ø.stroke.stroke 1 standard seals
- 1517.Ø.stroke.stroke 1.V FPM seals
- 1517.Ø.stroke.stroke 1.T HNBR seals
- 1517.Ø.stroke.stroke 1.M standard seals, magnetic piston
- 1517.Ø.stroke.stroke 1.MV FPM seals, magnetic piston
- 1517.Ø.stroke.stroke 1.MT HNBR seals, magnetic piston



Opposed tandem with common rods

Ordering code

- 1518.Ø.stroke.stroke 1 standard seals
- 1518.Ø.stroke.stroke 1.V FPM seals
- 1518.Ø.stroke.stroke 1.T HNBR seals
- 1518.Ø.stroke.stroke 1.M standard seals, magnetic piston
- 1518.Ø.stroke.stroke 1.MV FPM seals, magnetic piston
- 1518.Ø.stroke.stroke 1.MT HNBR seals, magnetic piston



Bore	20	25	32	40	50	63	80	100
E	29	30,5	32	33,5	35	38	44	47
F	9	9,15	9,75	10,5	11	11,25	13,75	15,25
F1	17,5	18,35	19,75	20,5	21,5	24,25	24,75	26,25
G	G 1/8"	G 1/8"	G 1/8"	G 1/8"	G 1/8"	G 1/8"	G 3/8"	G 3/8"
U	59	60,5	67	68,5	70	78	89	97
W	72	74	79	89	98	104	119	125
Z	14	13	15	22	28	28	31	31

Variations with magnetic piston

E	34	35,5	37	38,5	40	43	49	52
F1	22,5	23,35	24,75	25,5	26,5	29,25	29,75	31,25
U	69	70,5	77	78,5	80	88	99	107
W	82	84	89	99	108	114	129	135

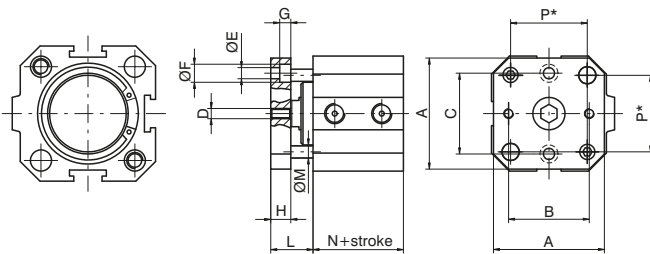
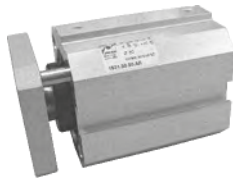
► Double acting version

Ordering code
1501.Ø.stroke.AR standard seals
1501.Ø.stroke.AR.V FPM seals
1501.Ø.stroke.AR.T HNBR seals

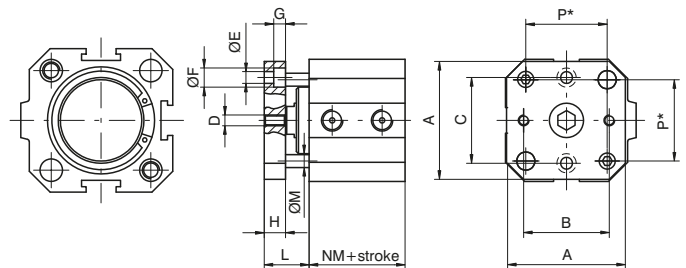
► Double version with magnetic piston

Ordering code
1511.Ø.stroke.AR standard seals
1511.Ø.stroke.AR.V FPM seals
1511.Ø.stroke.AR.T HNBR seals

Cylinders with non-rotating device



* = Distance between rods centres



* = Distance between rods centres

It is possible, upon request to have four holes threaded and with counter bores in order to rear mount the cylinder as if it was standard.

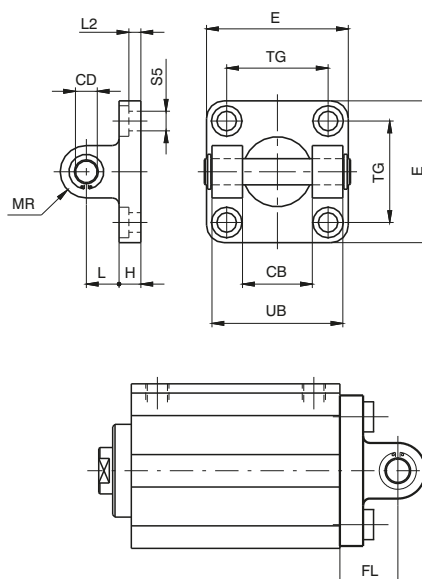
3 PNEUMATIC ACTUATION

Bore	20	25	32	40	50	63	80	100	
A	35	40	45	55	65	80	100	120	
B	22	26	32	40	50	62	82	103	
C	22	28	34	40	50	62	82	103	
D	M4	M5	M5	M5	M6	M6	M8	M8	
Ø E	4,5	5,5	5,5	5,5	6,5	8,5	8,5	8,5	
Ø F	7,5	9	9	9	10,5	13,5	13,5	13,5	
G	4,5	5,5	5,5	5,5	6,5	8,5	8,5	8,5	
H	8	8	10	10	12	12	15	15	
L	15	14,5	17,5	21	26	26	30,5	30,5	
Ø M	6	6	6	6	8	8	10	10	
N	29	30,5	32	33,5	35	38	44	47	
NM	34	35,5	37	38,5	40	43	49	52	
P	26	28	32,5	38	46,5	56,5	72	89	
Max. suggestion stroke	40	40	50	50	60	60	80	80	
Weight	stroke 0	40	50	70	90	200	250	490	650
	g	5	5	5	5	10	10	20	20

Rear clevis

Ordering code

1500.Ø.09F



Bore	20	25	32	40	50	63	80	100
CB (h 9)	16	20	26	28	32	40	50	60
CD (H 9)	8	10	10	12	12	16	16	20
E	35	40	45	52	65	75	95	115
H	6	8	9	9	11	11	14	14
L	12	12	13	16	16	21	22	27
MR	8	9	10	12	12	16	16	20
TG	26	28	32,5	38	46,5	56,5	72	89
UB	35	40	45	52	60	70	90	110
FL	18	20	22	25	27	32	36	41
L2	/	/	5,5	5,5	6,5	6,5	10	10
S5 (H13)	5,5	6,6	6,6	6,6	9	9	11	11
Weight g	45	75	80	130	185	310	530	910

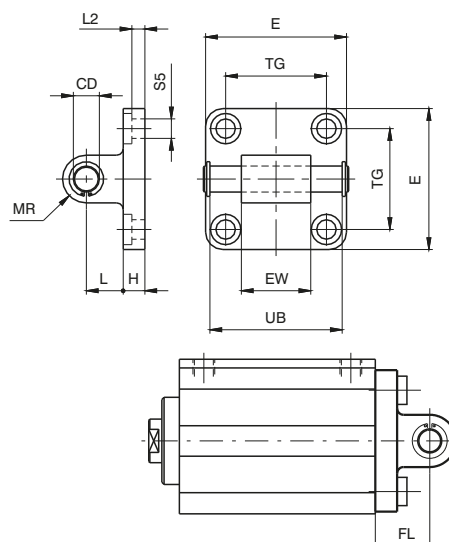
This allows anchorage of the cylinder both parallel and at a right angle to the plane; the cylinder rod can oscillate and self-align as necessary. It is made of aluminium alloy and painted black.

3 PNEUMATIC ACTUATION

Rear clevis male

Ordering code

1500.Ø.09/1F

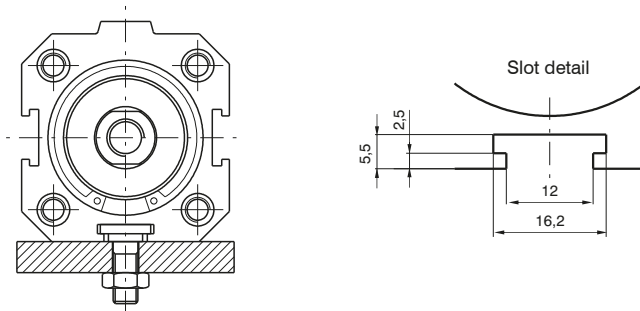
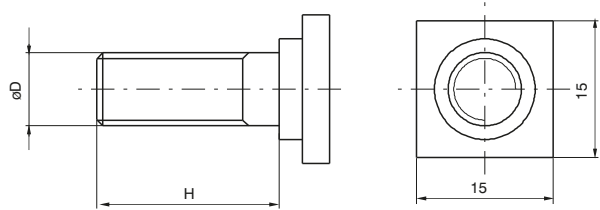


Bore	20	25	32	40	50	63	80	100
CD (h 9)	8	10	10	12	12	16	16	20
E	35	40	45	52	65	75	95	115
EW	16	20	26	28	32	40	50	60
H	6	8	9	9	11	11	14	14
L	12	12	13	16	16	21	22	27
MR	8	9	10	12	12	16	16	20
TG	26	28	32,5	38	46,5	56,5	72	89
UB	35	40	46	53	61	71	91	111
FL	18	20	22	25	27	32	36	41
L2	/	/	5,5	5,5	6,5	6,5	10	10
S5 (H 13)	5,5	6,6	6,6	6,6	9	9	11	11
every 10 mm Weight g	53	85	90	130	190	340	580	960

This allows anchorage of the cylinder both parallel and at a right angle to the plane; the cylinder rod can oscillate and self-align as necessary. It is made of aluminium alloy and painted black.

► Slot fixing screws

Ordering code
1500.15F (from Ø20 to Ø32)
1500.16F (from Ø40 to Ø63)
1500.18F (Ø80 and Ø100)

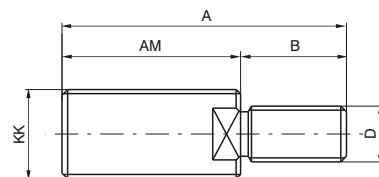


Example mounted with square headed screws on the plane.

Bore	20	25	32	40	50	63	80	100
ØD	M6	M6	M6	M8	M8	M8	M10	M10
H	15	15	15	20	20	20	25	25
Weight g		10			18			25

► Nipple with ISO standard thread

Ordering code
1500.Ø.17F



Fitted on the female thread of the compact cylinders, restore the ISO configurations rod (ISO 6432 for cylinders Ø 20 and Ø 25; ISO 6431 for cylinders from Ø 32 to Ø 100).

Bore	20	25	32	40	50	63	80	100
KK	M8x1,25	M10x1,25	M10x1,25	M12x1,25	M16x1,5	M16x1,5	M20x1,5	M20x1,5
AM	20	22	22	24	32	32	40	40
A	26	30	32	36	47	47	58	58
B	6	8	10	12	15	15	18	18
D	M4	M5	M6	M10	M12	M12	M16	M16
Weight g	8	15	16	27	65	65	110	110



Series 1500 - "EUROPE" compact cylinders

General

This series of cylinders is available in two versions with different threaded fixing holes.

The first one includes cylinders from Ø 32 to Ø 100 called "ISO" with fixing holes same as cylinders ISO 6431 - VDMA 24562. Cylinders from Ø 20 to Ø 100 called "UNITOP", parts of second series, are mainly according to standard UNITOP RU - P/6 - P/7. Cylinders Ø 12 and Ø 16 non standard, are interchangeable with similar products available on the market. The ISO version uses all fixing devices of series 1320 with exception of intermediate trunnion, while for cylinders Ø 12, Ø 16 and for "UNITOP" version are available fixing devices as flanges, foot, male and female clevis made with aluminium or steel. For use of magnetic sensors see directions on next page.

Construction characteristics

Body	anodised aluminium
End caps	from Ø12 to Ø25 aluminium alloy UNI 9006/1 anodised from Ø32 to Ø100 UNI 5076 aluminium die-casting and painted (cataphoresis)
Piston rod bushing	sintered bronze
Piston rod	from Ø12 to Ø25 stainless steel froml Ø32 to Ø100 C43 chromed (on request stainless steel for all bores)
Piston	from Ø12 to Ø25 plated zinc steel from Ø32 to Ø100 aluminium alloy 2011 UNI 9002/5
Seals	PUR (on request HNBR)
Spring	zinc plated steel for springs
Fixing screws	zinc plated steel

Operational characteristics

Fluid	Filtered air. No lubrication needed, if applied it shall be continuous.
Maximum working pressure	10 bar
Working temperature	-30°C - +80°C with standard seals (magnetic or non magnetic piston) -5°C - +80°C with HNBR seals (magnetic piston) -5°C - +120°C with HNBR seals (non magnetic piston)

Please follow the suggestions below to ensure a long life for these cylinders:

- use clean and lubricated air
- correct alignment during assembly with regard to the applied load so as to avoid radial components or bending the rod.
- avoid high speeds together with long strokes and heavy loads: this would produce kinetic energy which the cylinder cannot absorb, especially if used as a limit stop (in this case use mechanical stop device)
- evaluate the environmental characteristics of cylinder used (high temperature, hard atmosphere, dust, humidity etc.)

Please note: air must be dried for applications with lower temperature.

Use hydraulic oils H class (ISO VG32) for correct continued lubrication.

Our Technical Department will be glad to help.

Standard strokes for single acting cylinders

Ø12	10 mm max.
from Ø16 to Ø100	25 mm max.

Maximum suggested strokes

Ø12 and Ø16	100 mm
Ø20 and Ø25	200 mm
Ø32 and Ø40	300 mm
Ø50 and Ø63	400 mm
Ø80 and Ø100	500 mm

Longer strokes may be utilised if there is no radial loads on piston rod considering there isn't adjustable cushioning system.

Standard strokes for double acting cylinders

Ø12 and Ø16	from 5 to 40mm every 5mm
Ø20 and Ø25	from 5 to 50mm every 5mm
Ø32 - Ø100	from 5 to 80mm every 5mm

Maximum suggested strokes with non-rotating device

from Ø12 to Ø25	40 mm
from Ø32 to Ø100	80 mm

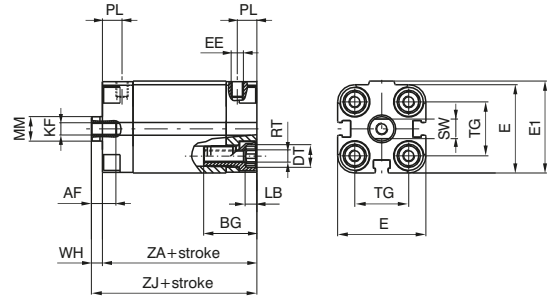
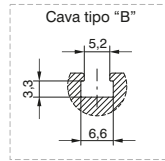
Minimum and maximum springs load

Bore	12	16	20	25	32	40	50	63	80	100
Min. load (N)	3,9	4,4	4,9	9,8	12,3	16,7	27,5	37,3	59,4	101,3
Max. load (N)	9,3	17,7	18,1	25,5	34,3	44,1	51,0	63,8	99,4	141,9

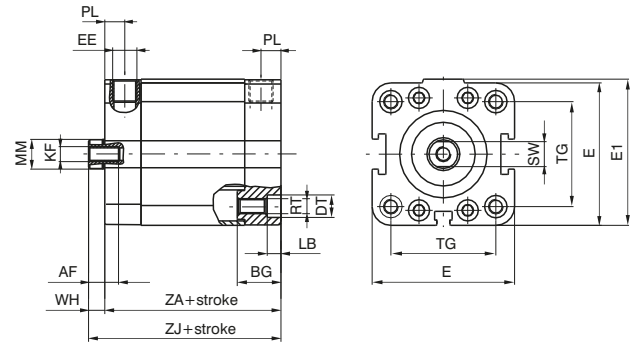
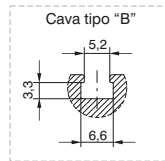
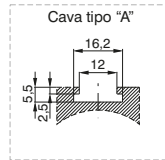
► BASIC version double and single acting



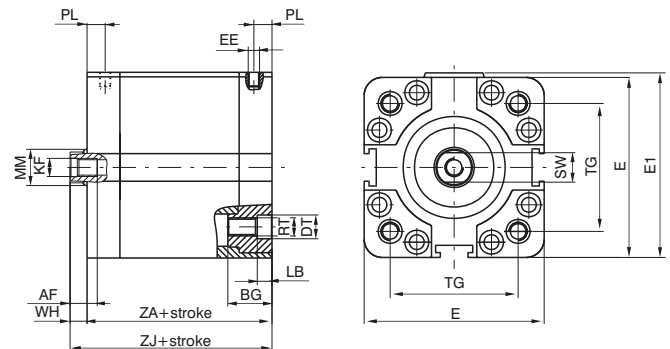
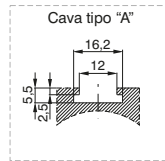
for bores from $\varnothing 12$ to $\varnothing 25$
use sensors codes
1580._, MHS._, MRS._ only



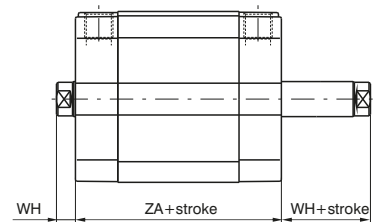
for bores from $\varnothing 32$ to $\varnothing 50$
use sensors codes
1500._, RS._, HS._ (slot A)
1580._, MHS._, MRS._
(slot B and slot A with adapter code 1380.01F)



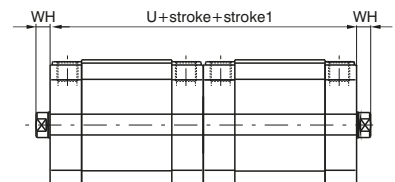
for bores from $\varnothing 63$ to $\varnothing 100$
use sensors codes
1500._, RS._, HS._ and
1580._, MHS._, MRS._
(with adapter code 1380.01F)



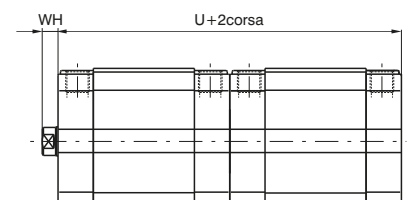
► Through rod cylinder version double and single acting



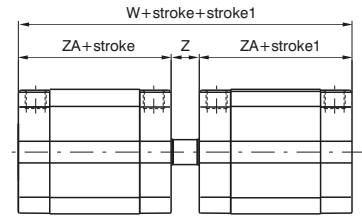
► Tandem with opposite rods



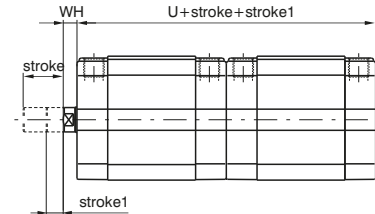
► Tandem push with common rods



Opposed tandem with common rod



Tandem push with independent rods



Ordering code

Basic version, through rod cylinder

- 15 . Ø . stroke
- 1 = Double acting (magnetic)
 - 2 = Front spring (magnetic)
 - 3 = Rear spring (magnetic)
 - 4 = Double acting (non magnetic)
 - 5 = Front spring (non magnetic)
 - 6 = Rear spring (non magnetic)
- 01 = Basic version - female piston rod
02 = Basic version - male piston rod
03 = Through rod version - female piston rod
04 = Through rod version - male piston rod
05 = Through rod version - bored male piston rod
06 = Through rod version - bored female piston rod
07 = Non - rotating version
08 = Through rod version with non rotating device on one side - female piston rod *
09 = Through rod version with non rotating device on one side - male piston rod *
- 1 = Chromed rod C43 (from Ø12 to Ø25 stainless steel)
2 = Stainless steel rod (from Ø32 to Ø100)
- 6 = ISO (Ø32 - Ø100)
7 = ISO HNBR (Ø32 - Ø100)
8 = UNITOP (Ø12 - Ø100)
9 = UNITOP HNBR (Ø12 - Ø100)
- * for single acting version, the spring is on the anti-rotation side

Tandem version

- 15 . Ø . stroke .(stroke1)
- A = Tandem with opposite rods female thread
 - E = Tandem with opposite rods male thread
 - L = Tandem opposite rods with non rotating device on both sides
 - C = Tandem push with common rods female thread
 - G = Tandem push with common rods male thread
 - H = Tandem push with common rods, push-pull version rod female threads
 - N = Tandem push with common rods with non rotating device
 - D = Opposed tandem with common rod
 - B = Tandem push with independent rods female thread
 - F = Tandem push with independent rods male thread
 - M = Tandem push with independent rods with non rotating device
 - P = Tandem through rod with independent rods - female thread
 - Q = Tandem through rod with independent rods - male thread
- 1 = Chromed rod C43 (from Ø12 to Ø25 stainless steel)
2 = Stainless steel rod (from Ø32 to Ø100)
- 6 = ISO (Ø32 - Ø100)
7 = ISO HNBR (Ø32 - Ø100)
8 = UNITOP (Ø12 - Ø100)
9 = UNITOP HNBR (Ø12 - Ø100)

Table of dimensions

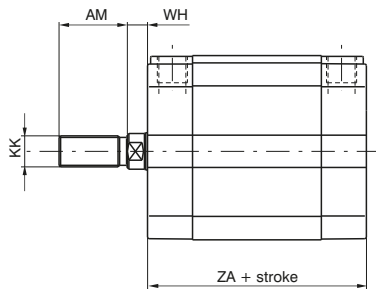
Bore	12	16	20	25	32	40	50	63	80	100	
AF	6	8	10	10	12	12	12	12	16	20	
BG	19	19	20	20	17,5	17,5	19,5	19,5	23,5	24,5	
DT	6	6	8	8	10	9	10,5	10,5	14	14	
E	29	29	36	40	48	57	67	80	102	122	
E1	30	30	37,5	41,5	49,5	58,5	69	82	105	125	
EE	M 5	M 5	M 5	M 5	G 1/8"	G 1/8"	G 1/8"	G 1/8"	G 1/8"	G 1/4"	
KF	M 3	M 4	M 5	M 5	M 6	M 6	M 8	M 8	M 10	M12	
LB	3,5	3,5	4,8	4,8	5,5	5,5	6,5	6,5	8,5	8,5	
MM	6	8	10	10	12	12	16	16	20	25	
PL	8	8	8	8	8	8	8	8	8,5	10,5	
RT	M 4	M 4	M 5	M 5	M 6	M 6	M 8	M 8	M 10	M 10	
SW	5	7	8	8	10	10	13	13	17	22	
TG ISO	/	/	/	/	32,5	38	46,5	56,5	72	89	
TG UNITOP	18	18	22	26	32	42	50	62	82	103	
U	76	76	76	79	89	91	91	100	112	133	
W	85	85	85	90	101	104	106	115	128	153	
WH	4,5	4,5	4,5	5,5	6	6,5	7,5	7,5	8	10	
Z	9	9	9	11	12	13	15	15	16	20	
ZA *	38	38	38	39,5	44,5	45,5	45,5	50	56	66,5	
ZJ *	42,5	42,5	42,5	45	50,5	52	53	57,5	64	76,5	
Weight	stroke 0	88	90	140	170	210	320	460	690	1390	2290
	g every 5 mm	8	8	12	13	15	19	25	31	50	66

* These dimensions increase of 10 mm for cylinders ø 12 front spring version.

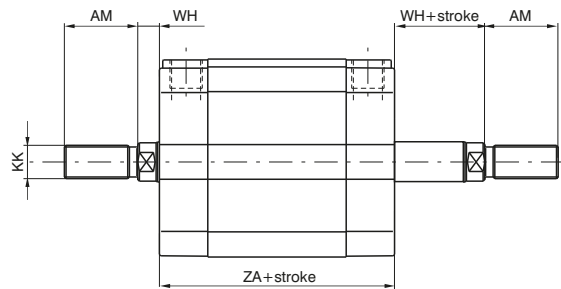
Tabular weights above refer to Basic Versions. The weights of Tandem versions are approximately double those shown.

PNEUMATIC ACTUATION 3

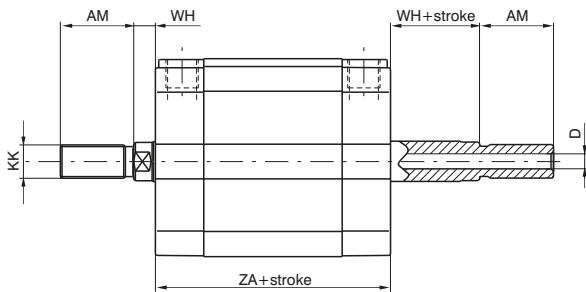
► Basic version male piston rod



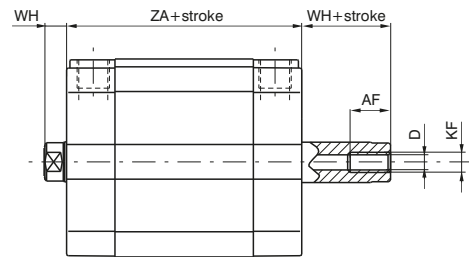
► Through rod cylinder version, male rod



► Through rod cylinder version, bored male piston rod

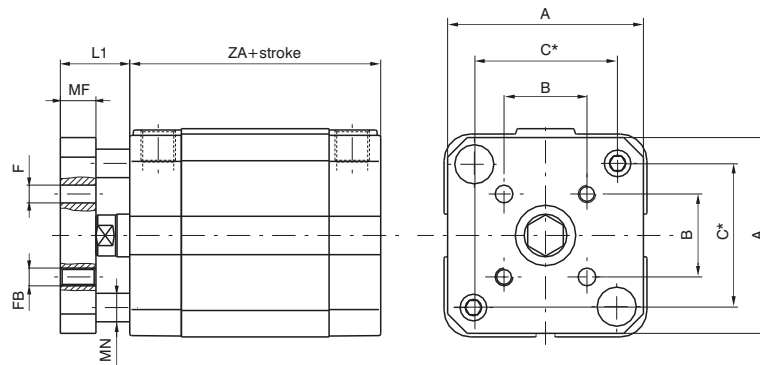


► Through rod cylinder version, bored female piston rod



Maximum allowed stroke = ZB (see table)

► Non-rotating version



* = Distance between rods centres

Bore	12	16	20	25	32	40	50	63	80	100
A	28,5	28,5	35,5	39,5	45	55	65	80	100	120
AF	6	8	10	10	12	12	12	12	16	20
AM	16	20	22	22	22	22	24	24	32	40
B	9,9	9,9	12	15,6	19,8	23,3	29,7	35,4	46	56,6
C	18	18	22	26	34	40,5	49	59,5	77	94
D	2,3	3,2	3,8	3,8	4,5	4,5	6	6	8	10
F	3	3	4	5	5	5	6	6	8	10
FB	M 3	M 3	M 4	M 5	M 5	M 5	M 6	M 6	M 8	M 10
KF	M 3	M 4	M 5	M 5	M 6	M 6	M 8	M 8	M 10	M 12
KK	M6X1	M8X1,25	M10X1,25	M10X1,25	M10X1,25	M10X1,25	M12X1,25	M12X1,25	M16X1,5	M20X1,5
L1	10,5	10,5	12,5	13,5	16	16,5	19,5	19,5	22	24
MF	6	6	8	8	10	10	12	12	14	14
MN	5	5	6	6	8	8	10	10	12	12
WH	4,5	4,5	4,5	5,5	6	6,5	7,5	7,5	8	10
ZA	38	38	38	39,5	44,5	45,5	45,5	50	56	66,5
ZB	20	25	50	50	50	50	75	75	80	80

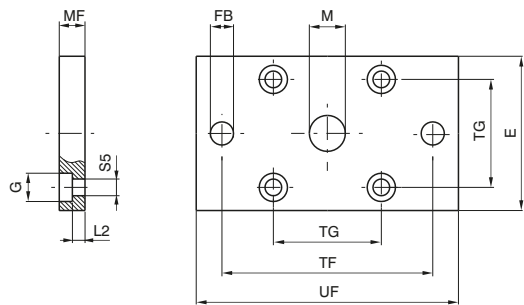
Front and rear flanges

Ordering code

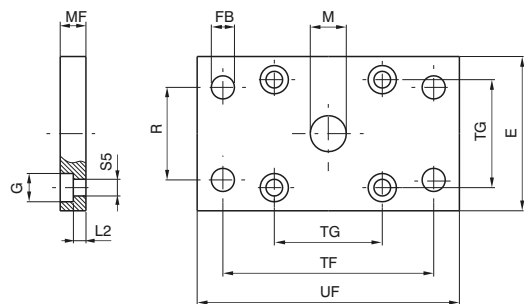
ISO
1500.Ø.03F
steel

UNITOP
1580.Ø.03F
steel

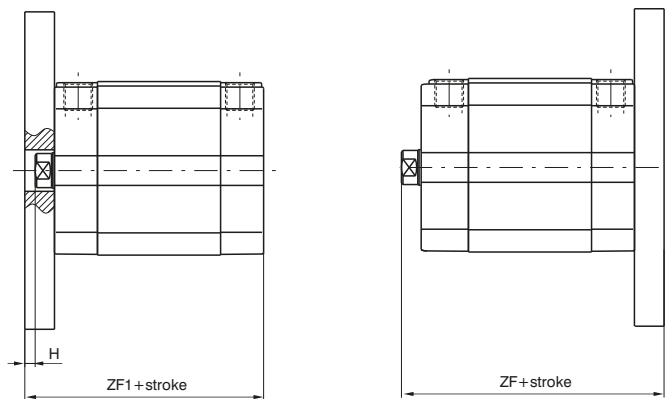
1580.Ø.03/1F
aluminium



For bores from 12 to 25



For bores from 32 to 100



Front

Rear

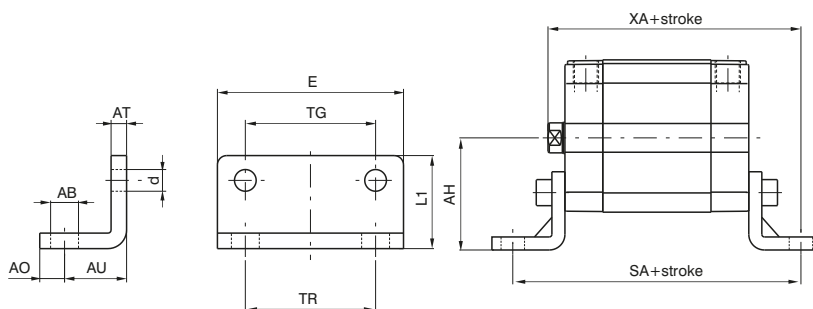
Plate which allows anchorage of the cylinder at a right angle to the plane. It is made with zinc-plated extruded steel or with aluminium.

	ISO Dimensions						UNITOP Dimensions									
	32	40	50	63	80	100	12-16	20	25	32	40	50	63	80	100	
Bore	32	40	50	63	80	100	12-16	20	25	32	40	50	63	80	100	
E	45	52	65	75	95	115	29	36	40	50	60	68	87	107	128	
S5 (H13)	6,6	6,6	9	9	11	11	4,5	5,5	5,5	6,6	6,6	9	9	11	11	
FB(H13)	7	9	9	9	12	14	5,5	6,6	6,6	7	9	9	9	12	14	
G	10,5	11	15	15	18	18	9	10	10	11	11	15	15	18	18	
H	4	3,5	4,5	4,5	8	6	5,5	5,5	4,5	4	3,5	4,5	7,5	7	5	
L2	5	5	6,5	6,5	8	8	4,6	4,6	4,6	3,6	3,6	3,4	6,4	4,4	4,4	
M(H11)	30	35	40	45	45	55	10	12	12	14	14	18	18	23	28	
MF(JS14)	10	10	12	12	16	16	10	10	10	10	10	12	15	15	15	
R(JS14)	32	36	45	50	63	75	/	/	/	32	36	45	50	63	75	
TF(JS14)	64	72	90	100	126	150	43	55	60	65	82	90	110	135	163	
TG	32,5	38	46,5	56,5	72	89	18	22	26	32	42	50	62	82	103	
UF	80	90	110	120	150	170	55	70	76	80	102	110	130	160	190	
ZF	60,5	62	65	69,5	80	92,5	52,5	52,5	55	60,5	62	65	72,5	79	91,5	
ZF1	54,5	55,5	57,5	62	72	82,5	48	48	49,5	54,5	55,5	57,5	65	71	81,5	
Weight	Steel		160	250	480	620	1430	1970	100	170	210	270	430	600	1210	2610
g	Aluminium		/	/	/	/	/	/	35	60	70	90	150	210	420	900

► **Foot**

Ordering code

ISO
1500.Ø.05/1F
(1 piece)
UNITOP
1580.Ø.05/1F
(1 piece)



Element used to anchor the cylinder parallel to the mounting plane. They are made with stamped and pierced sheet metal black painted.

	ISO Dimensions							UNITOP Dimensions								
Bore	32	40	50	63	80	100	12-16	20	25	32	40	50	63	80	100	
AB (H14)	7	9	9	9	12	14	5,5	6,6	6,6	6,6	9	9	11	11	13,5	
AH (JS15)	32	36	45	50	63	71	22	27	30	32	42,5	47	59,5	65,5	78	
AO (±0,2)	11	8	15	13	14	16	4,5	6	6	8	8	8	12	12	12	
AT	4	4	5	5	6	6	3	4	4	5	5	6	6	8	8	
AU (±0,2)	24	28	32	32	41	41	13	16	16	18	20	24	27	30	33	
d	7	7	9	9	11	11	4,4	5,4	5,4	6,6	6,6	9	9	11	11	
E	45	52	65	75	95	115	30	36	40	50	60	68	84	102	123	
L1	30	30	36	35	47	53	17,5	22	23	24	29,5	30	39	36,5	38,5	
SA	92,5	101,5	109,5	114	138	148,5	64	70	71,5	80,5	85,5	93,5	104	116	132,5	
TG	32,5	38	46,5	56,5	72	89	18	22	26	32	42	50	62	82	103	
TR	32	36	45	50	63	75	18	22	26	32	42	50	62	82	103	
XA	74,5	80	85	89,5	105	117,5	55,5	58,5	61	68,5	72	77	84,5	94	109,5	
Weight g	50	70	120	180	320	400	20	35	45	75	100	150	250	390	500	

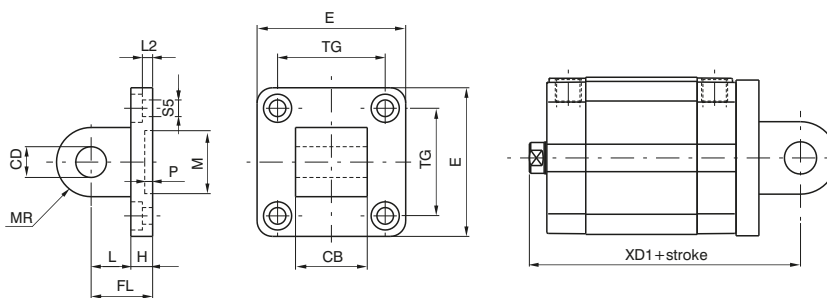
3

PNEUMATIC ACTUATION

► **UNITOP rear male clevis for bores from 12 to 25**

Ordering code

1580.Ø.09/1F (Aluminium)
1580.Ø.09/2F (Steel)

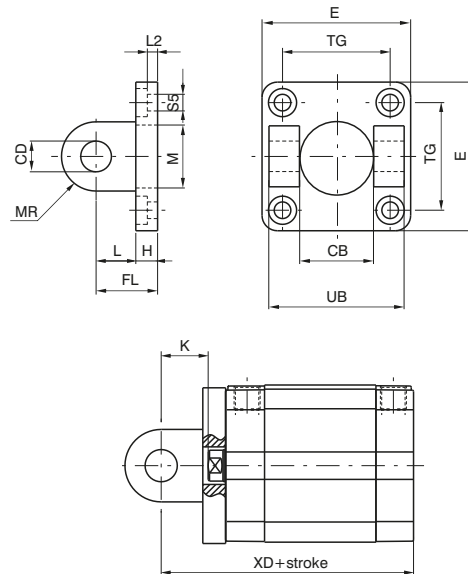


This type of mounting allows anchorage of the cylinder both parallel and at the right angle to the plane. The cylinder rod can oscillate and self-align to the connected load. It's made with aluminium alloy black painted or with zinc plated steel (from Ø 20).

Bore	12-16	20	25
CB(h14)	12	16	16
CD (H9)	6	8	8
E (±0,5)	27	34	38
FL	16	20	20
H	6	6	6
L	10	14	14
L2 (±0,5)	2,6	2,6	2,6
M (H11)	10	12	12
MR	6	8	8
P (+0,3)	3	3	3
S5 (H13)	4,5	5,5	5,5
TG (±0,2)	18	22	26
XD1	58,5	62,5	65
Weight g	Steel	/	70
	Aluminium	13	25

Front female clevis for bores from 32 to 100

Ordering code
ISO Aluminium 1500.Ø.08F
UNITOP (Aluminium) 1580.Ø.11F
UNITOP (Steel) 1580.Ø.13F



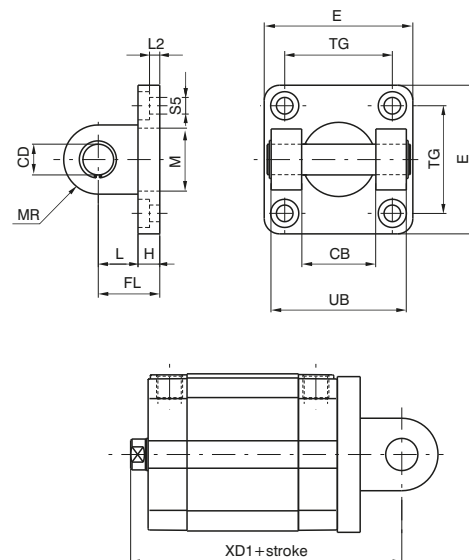
This type of mounting allows anchorage of the cylinder both parallel and at the right angle to the plane. The cylinder rod can oscillate and self-align to the connected load. It's made with aluminium alloy black painted or with zinc plated steel.

3

PNEUMATIC ACTUATION

Rear female clevis for bores from 32 to 100

Ordering code
ISO Aluminium 1500.Ø.09F
UNITOP (Aluminium) 1580.Ø.10F
UNITOP (Steel) 1580.Ø.12F

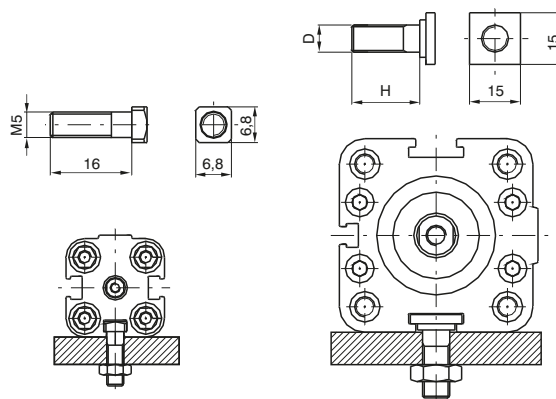


This type of mounting allows anchorage of the cylinder both parallel and at the right angle to the plane. The cylinder rod can oscillate and self-align to the connected load. It's made with aluminium alloy black painted or with zinc plated steel.

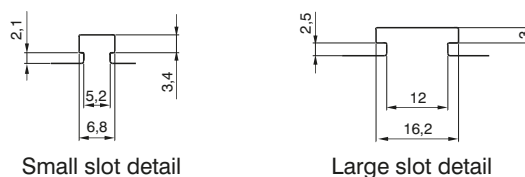
		ISO Dimensions						UNITOP Dimensions						
Bore		32	40	50	63	80	100	32	40	50	63	80	100	
CB (H14)		26	28	32	40	50	60	26	28	32	40	50	60	
CD (H9)		10	12	12	16	16	20	10	12	12	16	16	20	
E		45	52	65	75	95	115	48	58	66	83	102	123	
FL		22	25	27	32	36	41	22	25	27	32	36	41	
H		9	9	11	11	14	14	9	9	11	11	13	15	
K		16	18,5	19,5	24,5	28	31	16	18,5	19,5	24,5	28	31	
L		13	16	16	21	22	27	13	16	16	21	23	26	
L2		5,5	5,5	6,5	6,5	10	10	5,5	5,5	6,5	6,5	10	10	
M		30	35	40	45	45	55	14	14	18	18	23	28	
MR		10	12	12	16	16	20	10	12,5	12,5	15	15	20	
S5		6,6	6,6	9	9	11	11	6,6	6,6	9	9	11	11	
TG		32,5	38	46,5	56,5	72	89	32	42	50	62	82	103	
UB		45	52	60	70	90	110	45	52	60	70	90	110	
XD		66,5	70,5	72,5	82	92	107,5	66,5	70,5	72,5	82	92	107,5	
XD1		72,5	77	80	89,5	100	117,5	72,5	77	80	89,5	100	117,5	
Weight g	Steel	Front	/	/	/	/	/	180	310	420	700	1240	2210	
	Steel	Rear	/	/	/	/	/	220	360	480	830	1390	2500	
	Alum.	Front	40	70	120	170	360	570	65	110	145	240	430	770
	Alum.	Rear	80	120	180	300	500	860	80	125	170	290	480	865

Slot fixing screws

Ordering code
1500.17F small slot (from Ø12 to Ø50)
1500.15F large slot (Ø32)
1500.16F large slot (from Ø40 to Ø63)
1500.18F large slot (from Ø80 to Ø100)



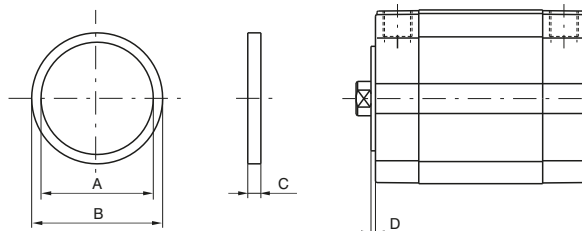
Example of mounting with square head screws



Bore	12÷50	32	40÷63	80÷100
D	/	M6	M8	M10
H	/	15	20	25
Weight g	8	10	18	25

Centering rings

Ordering code
1580.Ø.02F



This aluminium ring allows the center assembling of the cylinder.

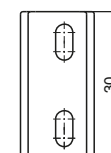
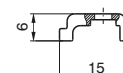
Bore	32	40	50	63	80	100
A	25	30	35	40	40	50
B (e11)	30	35	40	45	45	55
C	3,5	3,5	3,5	4,5	5,5	5,5
D	1,5	1,5	1,5	2	2,5	2,5
Weight g	2	2	3	4	5	6

Sensor adapter

Ordering code
1380.01F



Weight g 2



Nylon accessory for sensor mounting 1580._, MRS._, MHS._ inside "A" shape.