

Push button - Spring

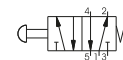
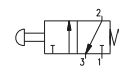
Coding: T224.1.8.1

Operational characteristics

Fluid	Filtered air. No lubrication needed, if applied it shall be continuous
Max working pressure (bar)	10
Temperature °C	-5 ÷ +50
Flow rate at 6 bar with Δp=1 (NI/min)	1050
Orifice size (mm)	8.5
Working ports size	G1/4"

TYPE	Operating force 50 N
1 32 = 3 ways	
52 = 5 ways	

Operating force 50 N

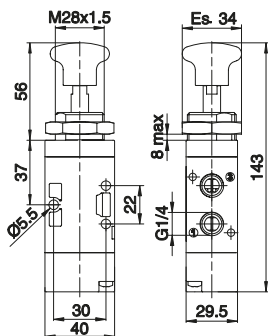


3 ways



Weight 170 g

T224.32.8.1

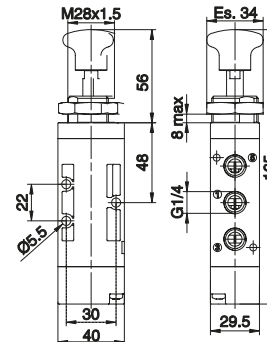


5 ways



Weight 200 g

T224.52.8.1



Push button 2 positions

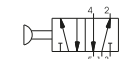
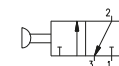
Coding: T224.1.8

Operational characteristics

Fluid	Filtered air. No lubrication needed, if applied it shall be continuous
Max working pressure (bar)	10
Temperature °C	-5 ÷ +50
Flow rate at 6 bar with Δp=1 (NI/min)	1050
Orifice size (mm)	8.5
Working ports size	G1/4"

TYPE	Operating force 13 N
1 32 = 3 ways	
52 = 5 ways	

Operating force 13 N

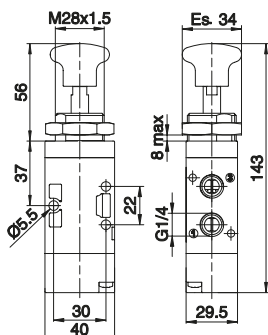


3 ways



Weight 170 g

T224.32.8

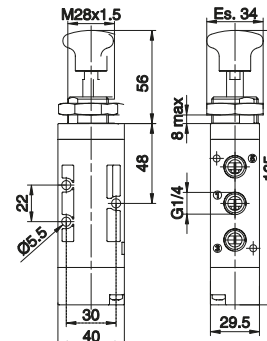


5 ways



Weight 200 g

T224.52.8



Lever lateral - Spring

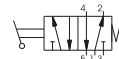
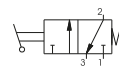
Coding: T224.1.9.1/C

Operational characteristics

Fluid	Filtered air. No lubrication needed, if applied it shall be continuous
Max working pressure (bar)	10
Temperature °C	-5 ÷ +50
Flow rate at 6 bar with Δp=1 (NI/min)	1050
Orifice size (mm)	8.5
Working ports size	G1/4"

TYPE	Operating force 50 N
1 32 = 3 ways	
52 = 5 ways	
LEVER COLOR	
1 = Red	
2 = Black	
3 = Green	

Operating force 50 N

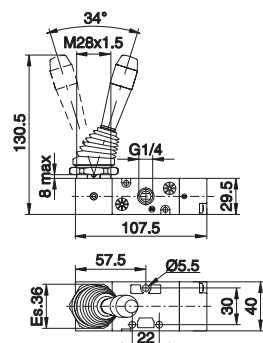


3 ways



Weight 220 g

T224.32.9.1/C

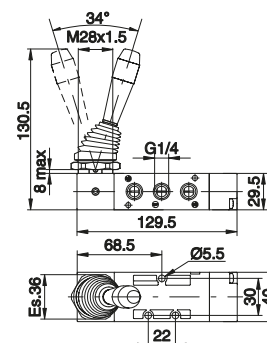


5 ways



Weight 250 g

T224.52.9.1/C

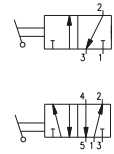


Lever lateral 2 positions

Coding: T224.1.9/C

Operational characteristics	
Fluid	Filtered air. No lubrication needed, if applied it shall be continuous
Max working pressure (bar)	10
Temperature °C	-5 ÷ +50
Flow rate at 6 bar with Δp=1 (NI/min)	1050
Orifice size (mm)	8.5
Working ports size	G1/4"

T	TYPE
	32 = 3 ways 52 = 5 ways
C	LEVER COLOR
	1 = Red 2 = Black 3 = Green

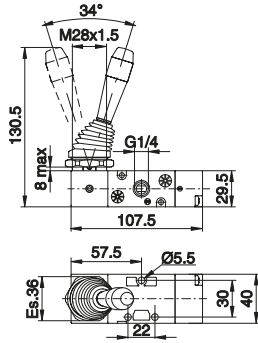


3 ways



Weight 220 g

T224.32.9/C

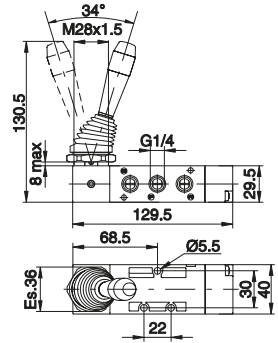


5 ways



Weight 250 g

T224.52.9/C



Lever lateral 3 positions

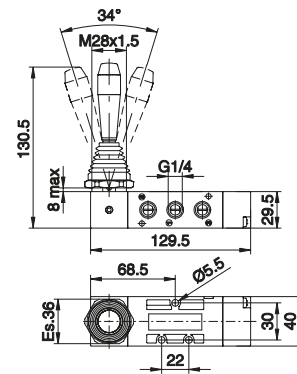
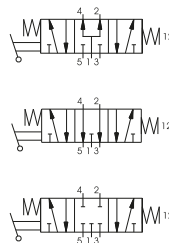
Coding: T224.53.F9.1/C

Operational characteristics	
Fluid	Filtered air. No lubrication needed, if applied it shall be continuous
Max working pressure (bar)	10
Temperature °C	-5 ÷ +50
Flow rate at 6 bar with Δp=1 (NI/min)	900
Orifice size (mm)	8.5
Working ports size	G1/4"

F	FUNCTION
	31 = Closed centres 32 = Open centres 33 = Pressured centres
	LEVER COLOR
C	1 = Red 2 = Black 3 = Green



Weight 270 g



Lateral lever - 3 positions detent

Coding: T224.53.F9.1/C

Operational characteristics	
Fluid	Filtered air. No lubrication needed, if applied it shall be continuous
Max working pressure (bar)	10
Temperature °C	-5 ÷ +50
Flow rate at 6 bar with Δp=1 (NI/min)	900
Orifice size (mm)	8.5
Working ports size	G1/4"

F	FUNCTION
	31 = Closed centres 32 = Open centres 33 = Pressured centres
	LEVER COLOR
C	1 = Red 2 = Black 3 = Green



Weight 270 g

