

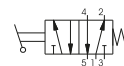
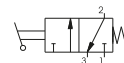
Lever lateral - Spring

Coding: 211.1.9.1

Operational characteristics

Fluid	Filtered air. No lubrication needed, if applied it shall be continuous
Max working pressure (bar)	10
Temperature °C	-5 ÷ +70
Flow rate at 6 bar with Δp=1 (NI/min)	6500
Orifice size (mm)	20
Working ports size	G1"

TYPE
① 32 = 3 ways
52 = 5 ways

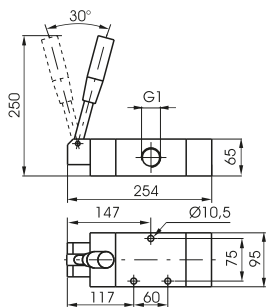


3 ways



Weight 4300 g

211.32.9.1

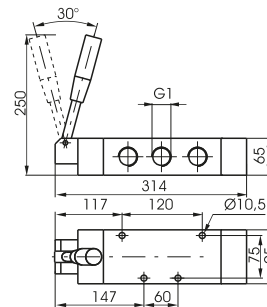


5 ways



Weight 4900 g

211.52.9.1



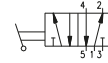
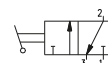
Lever lateral 2 positions

Coding: 211.1.9

Operational characteristics

Fluid	Filtered air. No lubrication needed, if applied it shall be continuous
Max working pressure (bar)	10
Temperature °C	-5 ÷ +70
Flow rate at 6 bar with Δp=1 (NI/min)	6500
Orifice size (mm)	20
Working ports size	G1"

TYPE
① 32 = 3 ways
52 = 5 ways

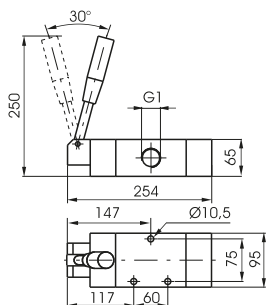


3 ways



Weight 4300 g

211.32.9

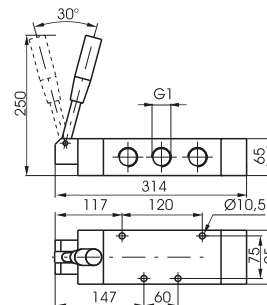


5 ways



Weight 4900 g

211.52.9



Lever lateral spring centre 3 positions

Coding: 211.53.1.9.1

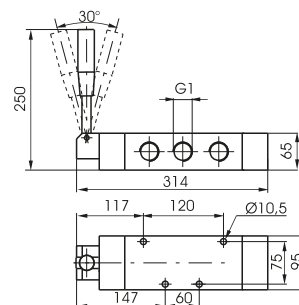
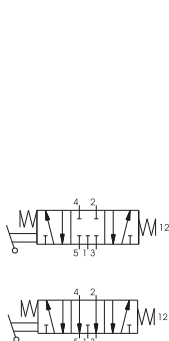
Operational characteristics

Fluid	Filtered air. No lubrication needed, if applied it shall be continuous
Max working pressure (bar)	10
Temperature °C	-5 ÷ +70
Flow rate at 6 bar with Δp=1 (NI/min)	6500
Orifice size (mm)	20
Working ports size	G1"

FUNCTION
② 31 = Closed centres
32 = Open centres



Weight 5000 g



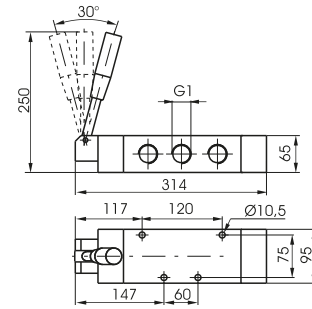
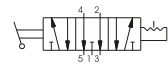
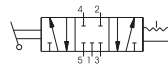
1 AIR DISTRIBUTION

Lever lateral 3 positions detent

Coding: 211.53.F.9

Operational characteristics	
Fluid	Filtered air. No lubrication needed, if applied it shall be continuous
Max working pressure (bar)	10
Temperature °C	-5 ÷ +70
Flow rate at 6 bar with $\Delta p=1$ (l/min)	6500
Orifice size (mm)	20
Working ports size	G1"

FUNCTION	
F	31 = Closed centres
	32 = Open centres



Weight 5000 g