

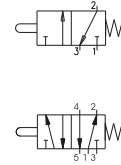
Tappet panel - Spring

Coding: 224.1.1

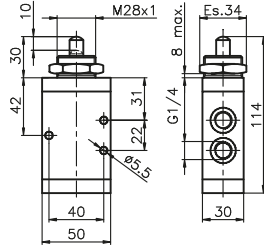
Operational characteristics

Fluid	Filtered air. No lubrication needed, if applied it shall be continuous
Max working pressure (bar)	10
Temperature °C	-5 ÷ +70
Flow rate at 6 bar with Δp=1 (NI/min)	1360
Orifice size (mm)	8
Working ports size	G1/4"

TYPE
① 32 = 3 ways
52 = 5 ways



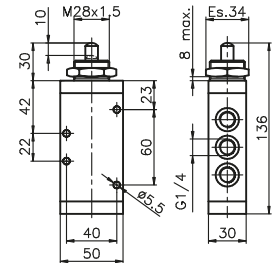
3 ways



Weight 370 g
Operating force 71,5 N

224.32.1.1

5 ways



Weight 455 g
Operating force 71,5 N

224.52.1.1

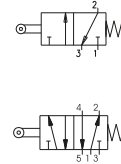
Lever roller - Spring

Coding: 224.2.1

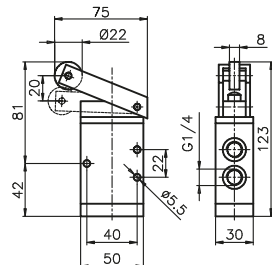
Operational characteristics

Fluid	Filtered air. No lubrication needed, if applied it shall be continuous
Max working pressure (bar)	10
Temperature °C	-5 ÷ +70
Flow rate at 6 bar with Δp=1 (NI/min)	1360
Orifice size (mm)	8
Working ports size	G1/4"

TYPE
① 32 = 3 ways
52 = 5 ways



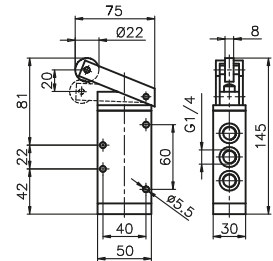
3 ways



Weight 510 g
Operating force 35 N

224.32.2.1

5 ways



Weight 595 g
Operating force 35 N

224.52.2.1

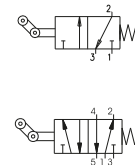
Lever roller unidirectional - Spring

Coding: 224.3.1

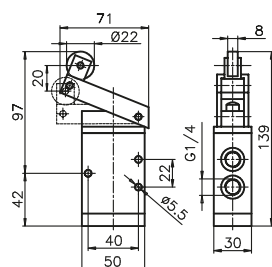
Operational characteristics

Fluid	Filtered air. No lubrication needed, if applied it shall be continuous
Max working pressure (bar)	10
Temperature °C	-5 ÷ +70
Flow rate at 6 bar with Δp=1 (NI/min)	1360
Orifice size (mm)	8
Working ports size	G1/4"

TYPE
① 32 = 3 ways
52 = 5 ways



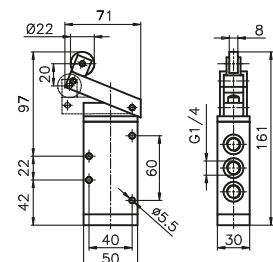
3 ways



Weight 525 g
Operating force 35 N

224.32.3.1

5 ways



Weight 610 g
Operating force 35 N

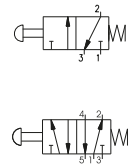
224.52.3.1

Push button - Spring

Coding: 224.1.8.1

Operational characteristics	
Fluid	Filtered air. No lubrication needed, if applied it shall be continuous
Max working pressure (bar)	10
Temperature °C	-5 ÷ +70
Flow rate at 6 bar with Δp=1 (NI/min)	1360
Orifice size (mm)	8
Working ports size	G1/4"

TYPE	
32	= 3 ways
52	= 5 ways

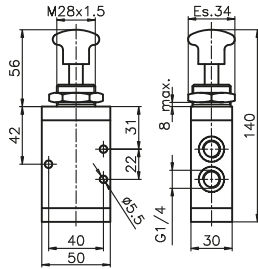


3 ways



Weight 395 g
Operating force 71,5 N

224.32.8.1

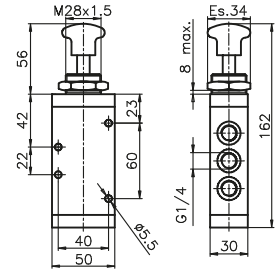


5 ways



Weight 480 g
Operating force 71,5 N

224.52.8.1

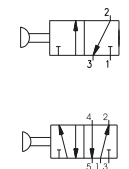


Push button 2 positions

Coding: 224.1.8

Operational characteristics	
Fluid	Filtered air. No lubrication needed, if applied it shall be continuous
Max working pressure (bar)	10
Temperature °C	-5 ÷ +70
Flow rate at 6 bar with Δp=1 (NI/min)	1360
Orifice size (mm)	8
Working ports size	G1/4"

TYPE	
32	= 3 ways
52	= 5 ways

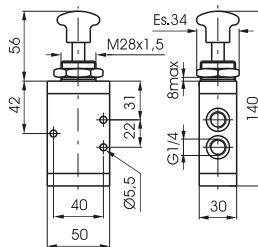


3 ways



Weight 385 g
Operating force 13 N

224.32.8

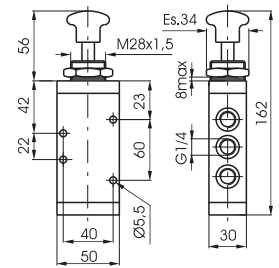


5 ways



Weight 470 g
Operating force 13 N

224.52.8

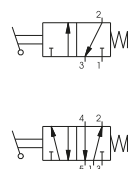


Lever lateral - Spring

Coding: 224.1.9.1/C

Operational characteristics	
Fluid	Filtered air. No lubrication needed, if applied it shall be continuous
Max working pressure (bar)	10
Temperature °C	-5 ÷ +70
Flow rate at 6 bar with Δp=1 (NI/min)	1360
Orifice size (mm)	8
Working ports size	G1/4"

TYPE	
32	= 3 ways
52	= 5 ways
LEVER COLOR	
1	= Red
2	= Black
3	= Green

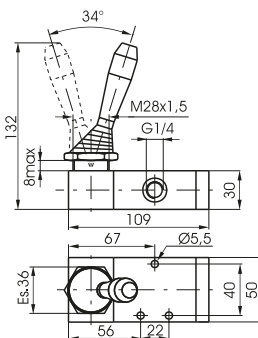


3 ways



Weight 520 g

224.32.9.1/C

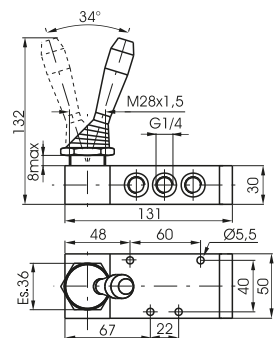


5 ways



Weight 605 g

224.52.9.1/C





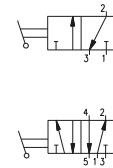
Lever lateral 2 positions

Coding: 224.●.9/●

Operational characteristics

Fluid	Filtered air. No lubrication needed, if applied it shall be continuous
Max working pressure (bar)	10
Temperature °C	-5 ÷ +70
Flow rate at 6 bar with Δp=1 (NI/min)	1360
Orifice size (mm)	8
Working ports size	G1/4"

TYPE	32 = 3 ways 52 = 5 ways
LEVER COLOR	1 = Red 2 = Black 3 = Green



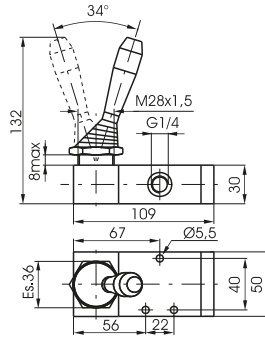
AIR DISTRIBUTION

3 ways



Weight 510 g

224.32.9/●

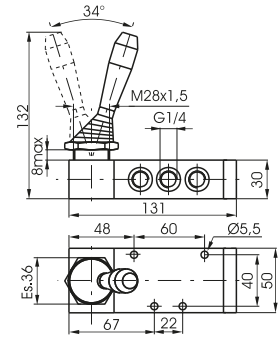


5 ways



Weight 595 g

224.52.9/●



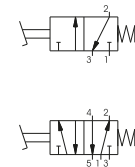
Pedal aluminium - Spring

Coding: 224.●.10.1

Operational characteristics

Fluid	Filtered air. No lubrication needed, if applied it shall be continuous
Max working pressure (bar)	10
Temperature °C	-5 ÷ +70
Flow rate at 6 bar with Δp=1 (NI/min)	1360
Orifice size (mm)	8
Working ports size	G1/4"

TYPE	32 = 3 ways 52 = 5 ways
------	----------------------------

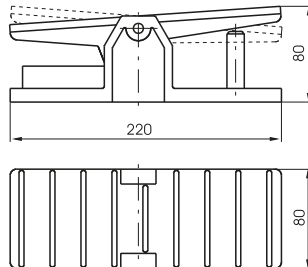


3 ways



Weight 1070 g

224.32.10.1

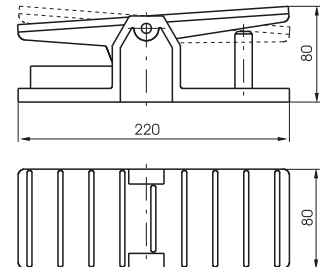


5 ways



Weight 1155 g

224.52.10.1



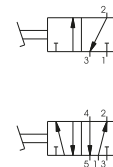
Pedal aluminium 2 positions

Coding: 224.●.10

Operational characteristics

Fluid	Filtered air. No lubrication needed, if applied it shall be continuous
Max working pressure (bar)	10
Temperature °C	-5 ÷ +70
Flow rate at 6 bar with Δp=1 (NI/min)	1360
Orifice size (mm)	8
Working ports size	G1/4"

TYPE	32 = 3 ways 52 = 5 ways
------	----------------------------

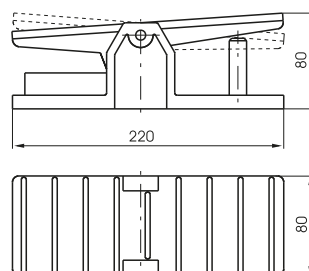


3 ways



Weight 1060 g

224.32.10

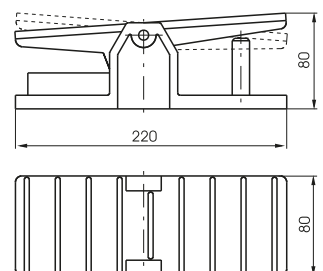


5 ways



Weight 1145 g

224.52.10



Lateral Lever spring - 3 positions

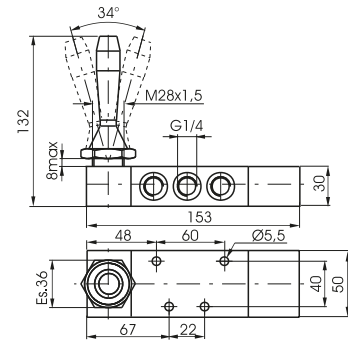
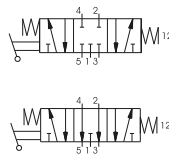
Coding: 224.53.F.9.1/C

Operational characteristics	
Fluid	Filtered air. No lubrication needed, if applied it shall be continuous
Max working pressure (bar)	10
Temperature °C	-5 ÷ +70
Flow rate at 6 bar with Δp=1 (NI/min)	1280
Orifice size (mm)	8
Working ports size	G1/4"

F	FUNCTION
	31 = Closed centres 32 = Open centres
C	LEVER COLOR
	1 = Red 2 = Black 3 = Green



Weight 745 g



Lever lateral 3 positions detent

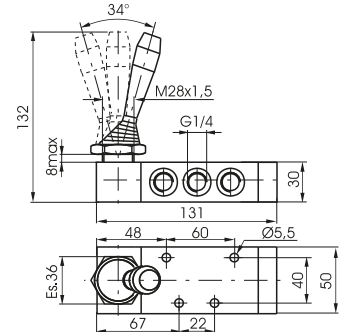
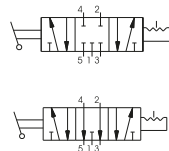
Coding: 224.53.F.9/C

Operational characteristics	
Fluid	Filtered air. No lubrication needed, if applied it shall be continuous
Max working pressure (bar)	10
Temperature °C	-5 ÷ +70
Flow rate at 6 bar with Δp=1 (NI/min)	1280
Orifice size (mm)	8
Working ports size	G1/4"

F	FUNCTION
	31 = Closed centres 32 = Open centres
C	LEVER COLOR
	1 = Red 2 = Black 3 = Green



Weight 605 g



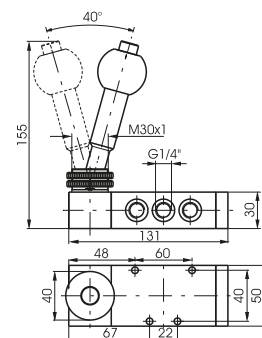
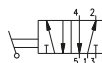
Lever lateral with locking device - 2 positions

Coding: 224.52.9.2

Operational characteristics	
Fluid	Filtered air. No lubrication needed, if applied it shall be continuous
Max working pressure (bar)	10
Temperature °C	-5 ÷ +70
Flow rate at 6 bar with Δp=1 (NI/min)	1020
Orifice size (mm)	8
Working ports size	G1/4"



Weight 825 g



1
AIR DISTRIBUTION

Lever lateral with locking device - Spring 3 positions

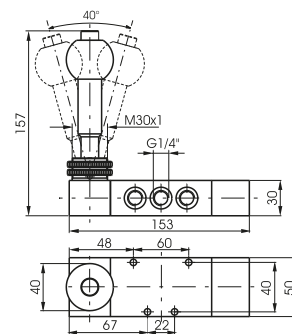
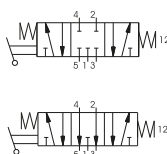
Coding: 224.53.F.9.2

Operational characteristics	
Fluid	Filtered air. No lubrication needed, if applied it shall be continuous
Max working pressure (bar)	10
Temperature °C	-5 ÷ +70
Flow rate at 6 bar with Δp=1 (NI/min)	1020
Orifice size (mm)	8
Working ports size	G1/4"

FUNCTION	
F	31 = Closed centres
	32 = Open centres



Weight 965 g



Pedal - Spring 3 positions

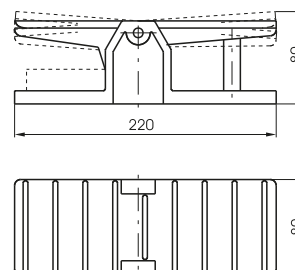
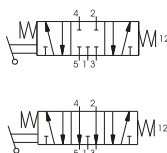
Coding: 224.53.F.10.1

Operational characteristics	
Fluid	Filtered air. No lubrication needed, if applied it shall be continuous
Max working pressure (bar)	10
Temperature °C	-5 ÷ +70
Flow rate at 6 bar with Δp=1 (NI/min)	1280
Orifice size (mm)	8
Working ports size	G1/4"

FUNCTION	
F	31 = Closed centres
	32 = Open centres



Weight 1285 g



Pedal 3 positions

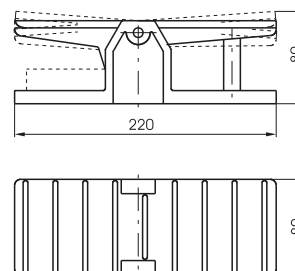
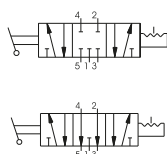
Coding: 224.53.F.10

Operational characteristics	
Fluid	Filtered air. No lubrication needed, if applied it shall be continuous
Max working pressure (bar)	10
Temperature °C	-5 ÷ +70
Flow rate at 6 bar with Δp=1 (NI/min)	1280
Orifice size (mm)	8
Working ports size	G1/4"

FUNCTION	
F	31 = Closed centres
	32 = Open centres



Weight 1145 g

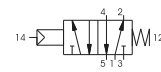
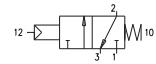


Pneumatic - Spring

Coding: 224.11.1

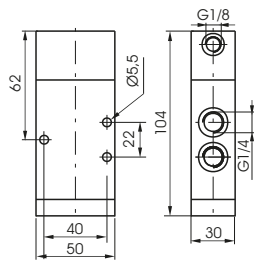
Operational characteristics	
Fluid	Filtered air. No lubrication needed, if applied it shall be continuous
Max working pressure (bar)	10
Temperature °C	-5 ÷ +70
Flow rate at 6 bar with Δp=1 (NI/min)	1360
Orifice size (mm)	8
Working ports size	G1/4"
Pilot ports size	G1/8"

TYPE	
32 = 3 ways	
52 = 5 ways	



Weight 370 g
Minimum piloting pressure 2,5 bar

224.32.11.1

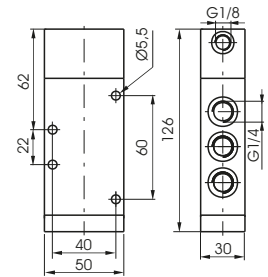


5 ways



Weight 450 g
Minimum piloting pressure 2,5 bar

224.52.11.1

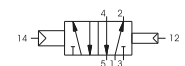
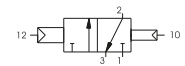


Pneumatic - Differential external

Coding: 224.11.12

Operational characteristics	
Fluid	Filtered air. No lubrication needed, if applied it shall be continuous
Max working pressure (bar)	11
Temperature °C	-5 ÷ +70
Flow rate at 6 bar with Δp=1 (NI/min)	1360
Orifice size (mm)	8
Working ports size	G1/4"
Pilot ports size	G1/8"

TYPE	
32 = 3 ways	
52 = 5 ways	

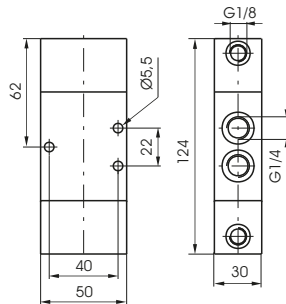


3 ways



Weight 480 g
Minimum piloting pressure 2,5 bar

224.32.11.12

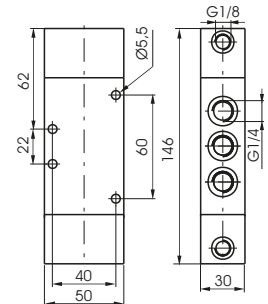


5 ways



Weight 550 g
Minimum piloting pressure 2,5 bar

224.52.11.12

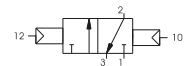


Pneumatic - Pneumatic

Coding: 224.11.11

Operational characteristics	
Fluid	Filtered air. No lubrication needed, if applied it shall be continuous
Max working pressure (bar)	12
Temperature °C	-5 ÷ +70
Flow rate at 6 bar with Δp=1 (NI/min)	1360
Orifice size (mm)	8
Working ports size	G1/4"
Pilot ports size	G1/8"

TYPE	
32 = 3 ways	
52 = 5 ways	

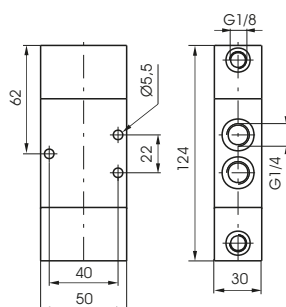


3 ways



Weight 470 g
Minimum piloting pressure 2 bar

224.32.11.11

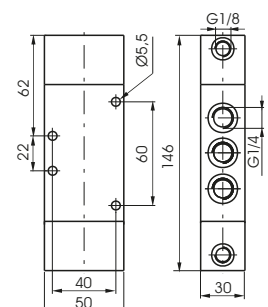


5 ways



Weight 540 g
Minimum piloting pressure 2 bar

224.52.11.11





Pneumatic - Pneumatic 5 ways 3 connections

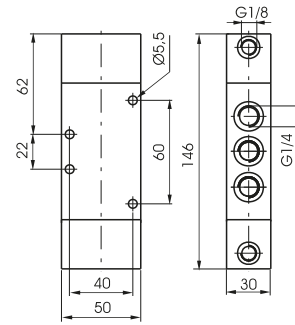
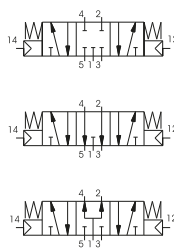
Coding: 224.53.F.11.11

Operational characteristics

Fluid	Filtered air. No lubrication needed, if applied it shall be continuous
Max working pressure (bar)	13
Temperature °C	-5 ÷ +70
Flow rate at 6 bar with $\Delta p=1$ (NI/min)	1280
Orifice size (mm)	8
Working ports size	G1/4"
Pilot ports size	G1/8"

FUNCTION	
F	31 = Closed centres
	32 = Open centres
	33 = Pressured centres

1
AIR DISTRIBUTION



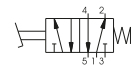
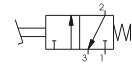
Weight 550 g
 Minimum piloting pressure 3 bar

Pedal protected 2 positions

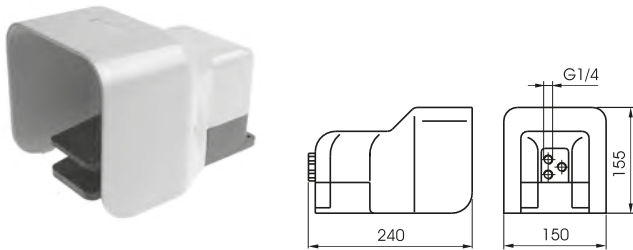
Coding: 214. **T**.10/1

Operational characteristics	
Fluid	Filtered air. No lubrication needed, if applied it shall be continuous
Max working pressure (bar)	10
Temperature °C	-5 ÷ +70
Flow rate at 6 bar with Δp=1 (NI/min)	1360
Orifice size (mm)	8
Working ports size	G1/4"

T	TYPE
	32 = 3 ways
	52 = 5 ways



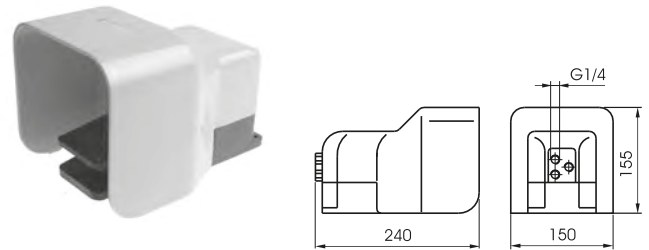
3 ways



Weight 1730 g

214.32.10. **V**

5 ways



Weight 1730 g

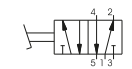
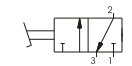
214.52.10. **V**

Pedal protected - Spring

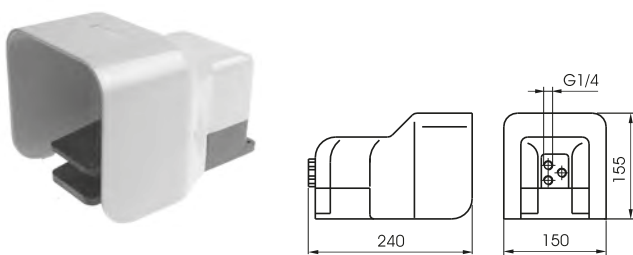
Coding: 214. **T**.10. **V**

Operational characteristics	
Fluid	Filtered air. No lubrication needed, if applied it shall be continuous
Max working pressure (bar)	10
Temperature °C	-5 ÷ +70
Flow rate at 6 bar with Δp=1 (NI/min)	1360
Orifice size (mm)	8
Working ports size	G1/4"

T	TYPE
	32 = 3 ways
	52 = 5 ways
V	VERSION
	1/1 = Standard version
	2/1 = without safety device



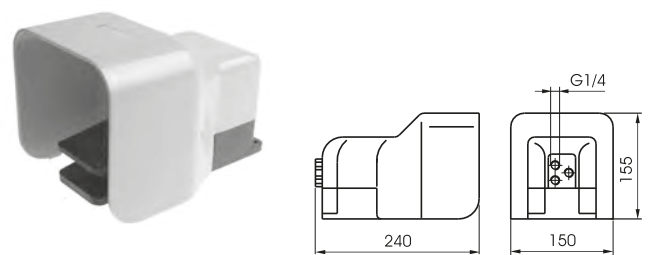
3 ways



Weight 1730 g

214.32.10/1

5 ways



Weight 1730 g

214.52.10/1

1
AIR DISTRIBUTION