

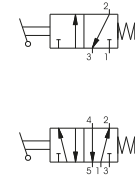
Lever lateral - Spring

Coding: 212. **T**.9.1

Operational characteristics

Fluid	Filtered air. No lubrication needed, if applied it shall be continuous
Max working pressure (bar)	10
Temperature °C	-5 ÷ +70
Flow rate at 6 bar with Δp=1 (NI/min)	3500
Orifice size (mm)	15
Working ports size	G1/2"

TYPE
T 32 = 3 ways
52 = 5 ways

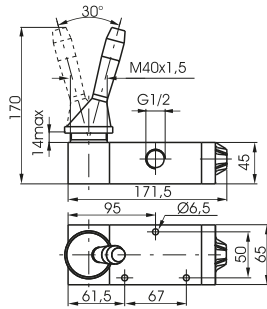


3 ways



Weight 1480 g

212.32.9.1

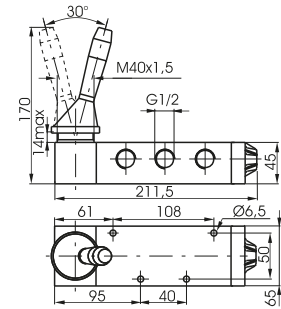


5 ways



Weight 1765 g

212.52.9.1



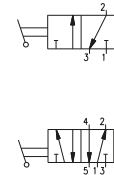
Lever lateral 2 positions

Coding: 212. **T**.9

Operational characteristics

Fluid	Filtered air. No lubrication needed, if applied it shall be continuous
Max working pressure (bar)	10
Temperature °C	-5 ÷ +70
Flow rate at 6 bar with Δp=1 (NI/min)	3500
Orifice size (mm)	15
Working ports size	G1/2"

TYPE
T 32 = 3 ways
52 = 5 ways

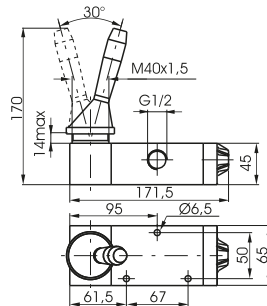


3 ways



Weight 1460 g

212.32.9

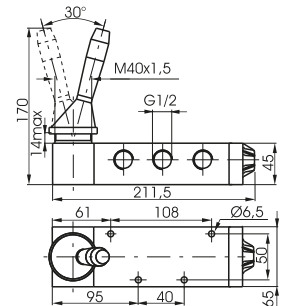


5 ways



Weight 1745 g

212.52.9



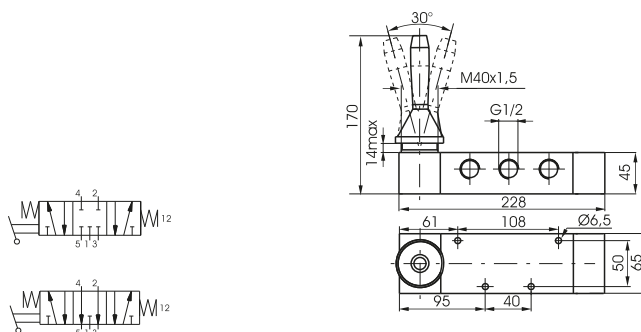
Lever lateral spring centre 3 positions

Coding: 212.53. **F**.9.1

Operational characteristics

Fluid	Filtered air. No lubrication needed, if applied it shall be continuous
Max working pressure (bar)	10
Temperature °C	-5 ÷ +70
Flow rate at 6 bar with Δp=1 (NI/min)	3000
Orifice size (mm)	15
Working ports size	G1/2"

FUNCTION
F 31 = Closed centres
32 = Open centres



Weight 2100 g

AIR DISTRIBUTION

Lever lateral 3 positions detent

Coding: 212.53.ⓕ.9

Operational characteristics	
Fluid	Filtered air. No lubrication needed, if applied it shall be continuous
Max working pressure (bar)	10
Temperature °C	-5 ÷ +70
Flow rate at 6 bar with Δp=1 (Nl/min)	3000
Orifice size (mm)	15
Working ports size	G1/2"

FUNCTION	
ⓕ	31 = Closed centres
	32 = Open centres



Weight 1765 g

