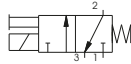


Solenoid valve S and S/1

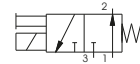


Weight 220 gr.

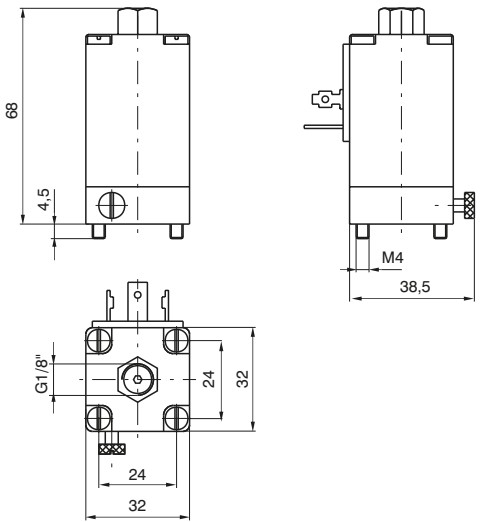
Normally Closed
(N.C.) - S



Normally Open
(N.O.) - S/1



1
AIR DISTRIBUTION

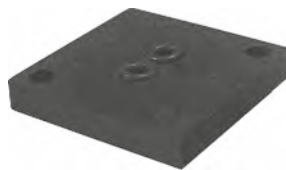


| Ordering code | | Available voltages Coil | |
|--|--|---|---------------------------------|
| S 2 S 4 S 5 S 6 | S 2/1 S 4/1 S 5/1 S 6/1 | 6 D.C. 12 D.C. 24 D.C. 48 D.C. | Direct current |
| S 16 S 17 S 19 S 20 S 21 S 22 S 23 S 24 | S 16/1 S 17/1 S 19/1 S 20/1 S 21/1 S 22/1 S 23/1 S 24/1 | 12/50 24/50 32/50 42/50 48/50 110/50 115/50 230/50 | Alternating current 50 Hz |
| S 36 S 37 S 38 S 39 S 40 S 41 | S 36/1 S 37/1 S 38/1 S 39/1 S 40/1 S 41/1 | 12/60 24/60 48/60 110/60 115/60 230/60 | Alternating current 60 Hz |
| S 56 S 57 S 58 | S 56/1 S 57/1 S 58/1 | 24/50-60 110/50-60 230/50-60 | Alternating current 50/60 Hz |

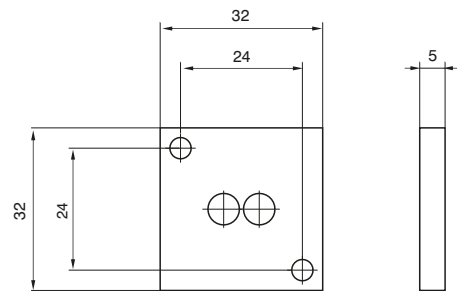
Closing plate

Ordering code

300.12.00



Weight 14 gr.

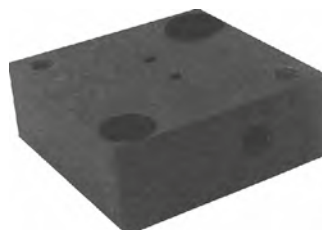


External feeding base

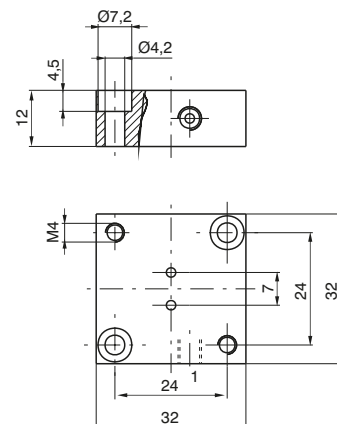
To be used with electrodistributeur to get a different piloting pressure from the line one.

Ordering code

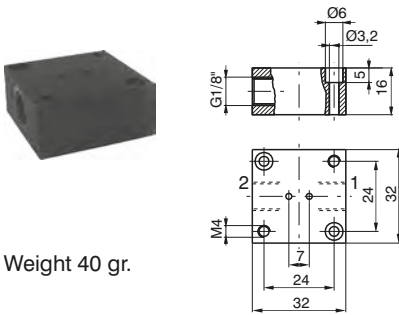
300.10.05



Weight 35 gr.



Individual base

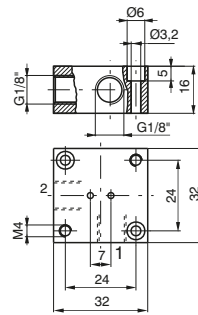


Weight 40 gr.

In line port - thread G 1/8"
1 = INLET PORT (N.C.)
2 = OUTLET PORT (N.C.)
With solenoid valve N.O.
1 = EXHAUST PORT
2 = OUTLET PORT

Ordering code

300.04.00



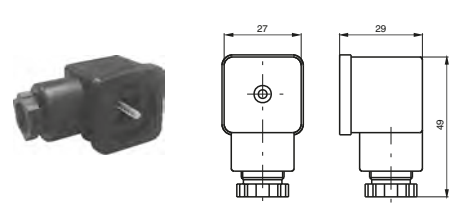
Weight 40 gr.

90° Port - thread G 1/8"
1 = INLET PORT (N.C.)
2 = OUTLET PORT (N.C.)
With solenoid valve N.O.
1 = EXHAUST PORT
2 = OUTLET PORT

Ordering code

300.04.90

Electrical connector



Weight 25 gr.

Ordering code

| | |
|-------------------|----------------------|
| 300.11.00 | Standard |
| 300.11.0 L | Led |
| | 1 = 24 V D.C. / A.C. |
| | 2 = 110 V 50/60 Hz |
| | 3 = 230 V 50/60 Hz |

Modular bases for series mounting

Ordering code

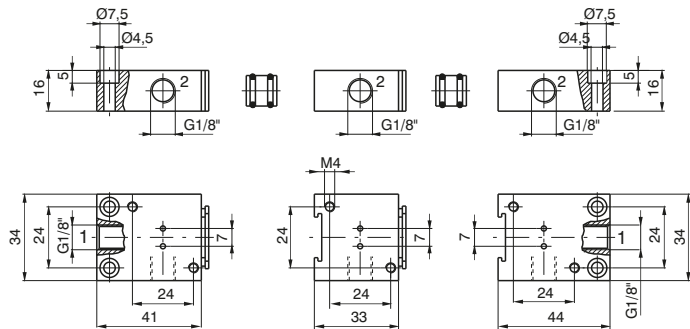
Initial base
300.05.00

Intermediate base
300.06.00

Last base
300.07.00

Bored spacer
300.05.01
Weight 5 gr.

Solid spacer
300.05.02
Weight 6 gr.



Initial base

Intermediate base

Last base



Weight 52 gr.

Weight 40 gr.

Weight 52 gr.

Multiple integral bases for series mounting



Ordering code

300.08.02 2 positions
300.08.03 3 positions
300.08.04 4 positions
300.08.05 5 positions

