



AIR DISTRIBUTION

Solenoid - Spring

Coding: 805.●.0.1.●

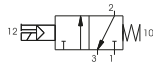
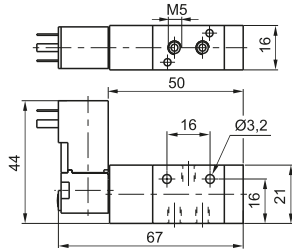
Operational characteristics

Fluid	Filtered air. No lubrication needed, if applied it shall be continuous
Max working pressure (bar)	10
Temperature °C	-5 ÷ +50
Flow rate at 6 bar with Δp=1 (NI/min)	160
Orifice size (mm)	2.5
Working ports size	M5

TYPE	
● 32 = 3 ways	
● 52 = 5 ways	

VOLTAGE	
● 01 = 12V D.C.	
● 02 = 24V D.C.	
● 05 = 24V A.C.	
● 06 = 110V A.C.	
● 07 = 230V A.C.	

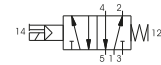
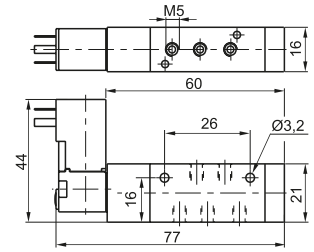
3 ways



Weight 80 g
Minimum working pressure 2 bar

805.32.0.1.●

5 ways



Weight 85 g
Minimum working pressure 2 bar

805.52.0.1.●

Solenoid - Differential

Coding: 805.●.0.12.●

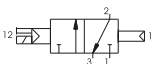
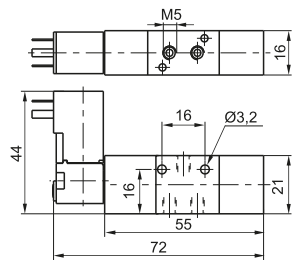
Operational characteristics

Fluid	Filtered air. No lubrication needed, if applied it shall be continuous
Max working pressure (bar)	10
Temperature °C	-5 ÷ +50
Flow rate at 6 bar with Δp=1 (NI/min)	160
Orifice size (mm)	2.5
Working ports size	M5

TYPE	
● 32 = 3 ways	
● 52 = 5 ways	

VOLTAGE	
● 01 = 12V D.C.	
● 02 = 24V D.C.	
● 05 = 24V A.C.	
● 06 = 110V A.C.	
● 07 = 230V A.C.	

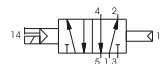
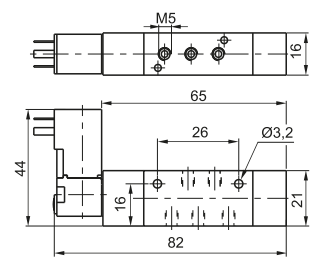
3 ways



Weight 85 g
Minimum working pressure 2 bar

805.32.0.12.●

5 ways



Weight 90 g
Minimum working pressure 2 bar

805.52.0.12.●

Solenoid - Solenoid

Coding: 805.●.0.0.●

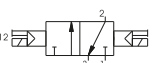
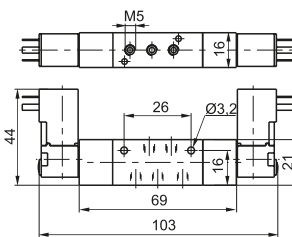
Operational characteristics

Fluid	Filtered air. No lubrication needed, if applied it shall be continuous
Max working pressure (bar)	10
Temperature °C	-5 ÷ +50
Flow rate at 6 bar with Δp=1 (NI/min)	160
Orifice size (mm)	2.5
Working ports size	M5

TYPE	
● 32 = 3 ways	
● 52 = 5 ways	

VOLTAGE	
● 01 = 12V D.C.	
● 02 = 24V D.C.	
● 05 = 24V A.C.	
● 06 = 110V A.C.	
● 07 = 230V A.C.	

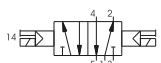
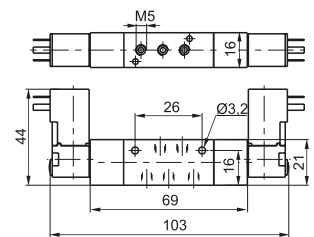
3 ways



Weight 120 g
Minimum working pressure 1,5 bar

805.32.0.0.●

5 ways



Weight 125 g
Minimum working pressure 1,5 bar

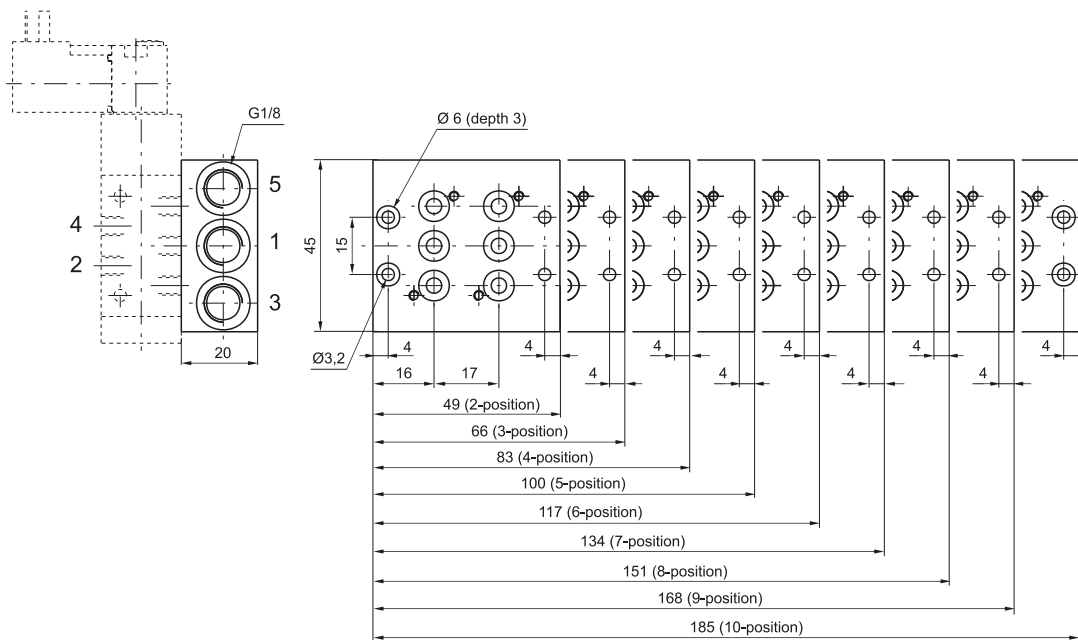
805.52.0.0.●

Collectors

Coding: 805.N



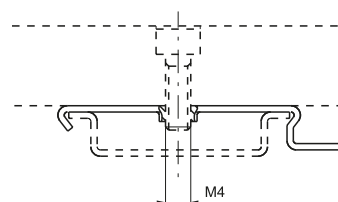
N. POSITIONS
02 = 2 positions (weight 95 g)
03 = 3 positions (weight 130 g)
04 = 4 positions (weight 160 g)
05 = 5 positions (weight 190 g)
06 = 6 positions (weight 225 g)
07 = 7 positions (weight 260 g)
08 = 8 positions (weight 290 g)
09 = 9 positions (weight 325 g)
10 = 10 positions (weight 365 g)



1
AIR DISTRIBUTION

Clip

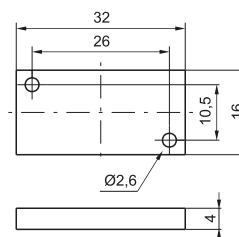
Coding: 800.00



weight 5 g
(for mounting the distributors groups on guide DIN 46277/3)

Closing plate

Coding: 805.00



weight 15 g



Solenoid - Spring

Coding: 808.ⓧ.0.1.ⓧ

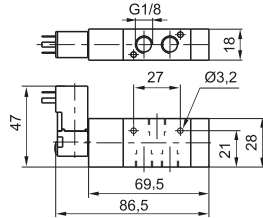
Operational characteristics

Fluid	Filtered air. No lubrication needed, if applied it shall be continuous
Max working pressure (bar)	10
Temperature °C	-5 ÷ +50
Flow rate at 6 bar with Δp=1 (NI/min)	520
Orifice size (mm)	4
Working ports size	G 1/8"

TYPE	
ⓧ 32 = 3 ways	
52 = 5 ways	

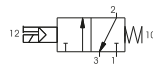
VOLTAGE	
ⓧ 01 = 12V D.C.	
02 = 24V D.C.	
05 = 24V A.C.	
06 = 110V A.C.	
07 = 230 V A.C.	

3 ways

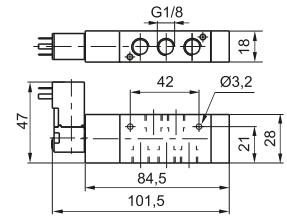


Weight 130 g
Minimum working pressure 2 bar

808.32.0.1.ⓧ

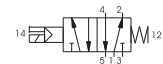


5 ways



Weight 135 g
Minimum working pressure 2 bar

808.52.0.1.ⓧ



Solenoid - Differential

Coding: 808.ⓧ.0.12.ⓧ

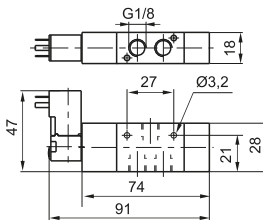
Operational characteristics

Fluid	Filtered air. No lubrication needed, if applied it shall be continuous
Max working pressure (bar)	10
Temperature °C	-5 ÷ +50
Flow rate at 6 bar with Δp=1 (NI/min)	520
Orifice size (mm)	4
Working ports size	G 1/8"

TYPE	
ⓧ 32 = 3 ways	
52 = 5 ways	

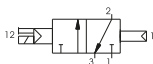
VOLTAGE	
ⓧ 01 = 12V D.C.	
02 = 24V D.C.	
05 = 24V A.C.	
06 = 110V A.C.	
07 = 230 V A.C.	

3 ways

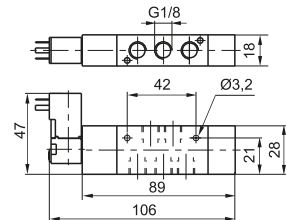


Weight 140 g
Minimum working pressure 2 bar

808.32.0.12.ⓧ



5 ways



Weight 145 g
Minimum working pressure 2 bar

808.52.0.12.ⓧ



Solenoid - Solenoid

Coding: 808.ⓧ.0.0.ⓧ

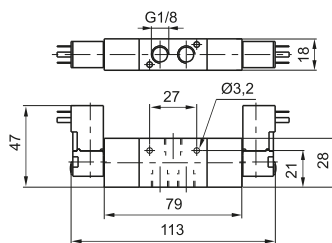
Operational characteristics

Fluid	Filtered air. No lubrication needed, if applied it shall be continuous
Max working pressure (bar)	10
Temperature °C	-5 ÷ +50
Flow rate at 6 bar with Δp=1 (NI/min)	520
Orifice size (mm)	4
Working ports size	G 1/8"

TYPE	
ⓧ 32 = 3 ways	
52 = 5 ways	

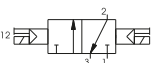
VOLTAGE	
ⓧ 01 = 12V D.C.	
02 = 24V D.C.	
05 = 24V A.C.	
06 = 110V A.C.	
07 = 230 V A.C.	

3 ways

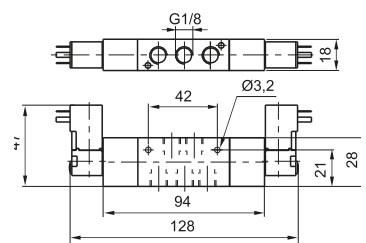


Weight 185 g
Minimum working pressure 1,5 bar

808.32.0.0.ⓧ



5 ways



Weight 190 g
Minimum working pressure 1,5 bar

808.52.0.0.ⓧ



AIR DISTRIBUTION

1

Solenoid - Solenoid 5 ways 3 connections

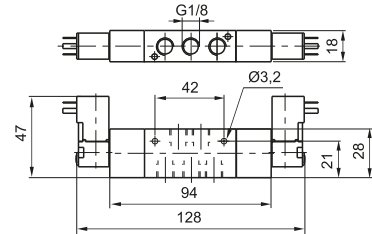
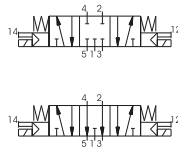
Coding: 808.53.ⓧ.0.0.ⓧ

Operational characteristics	
Fluid	Filtered air. No lubrication needed, if applied it shall be continuous
Max working pressure (bar)	10
Temperature °C	-5 ÷ +50
Flow rate at 6 bar with Δp=1 (Nl/min)	520
Orifice size (mm)	4
Working ports size	G 1/8"

TYPE		VOLTAGE	
ⓧ	31 = Closed centres	ⓧ	01 = 12V D.C.
	32 = Open centres		02 = 24V D.C.
	05 = 24V A.C.		
	06 = 110V A.C.		
	07 = 230 V A.C.		



Weight 190 g
Minimum working pressure 3 bar





Collectors

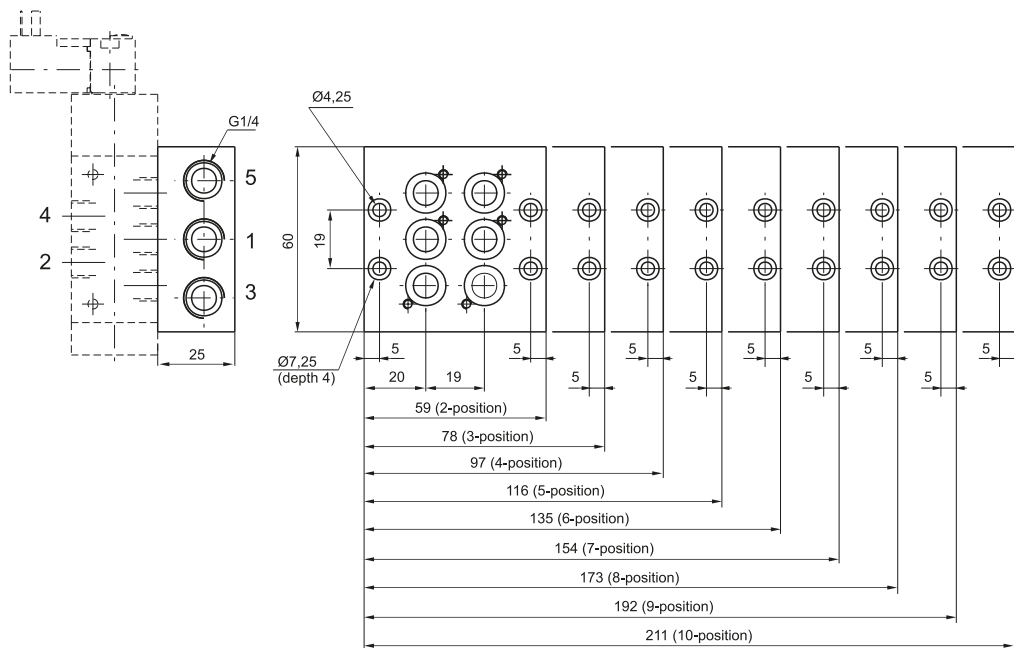
Coding: 808.N



N. POSITIONS	
02	= 2 positions (weight 180 g)
03	= 3 positions (weight 245 g)
04	= 4 positions (weight 310 g)
05	= 5 positions (weight 375 g)
06	= 6 positions (weight 440 g)
07	= 7 positions (weight 500 g)
08	= 8 positions (weight 560 g)
09	= 9 positions (weight 620 g)
10	= 10 positions (weight 680 g)

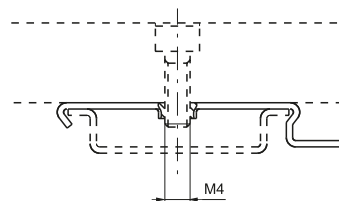
1

AIR DISTRIBUTION



Clip

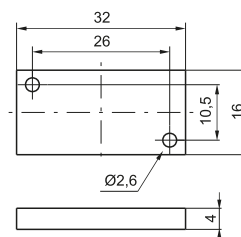
Coding: 800.00



weight 5 g
(for mounting the distributors groups on guide DIN 46277/3)

Closing plate

Coding: 808.00



Weight 65 g