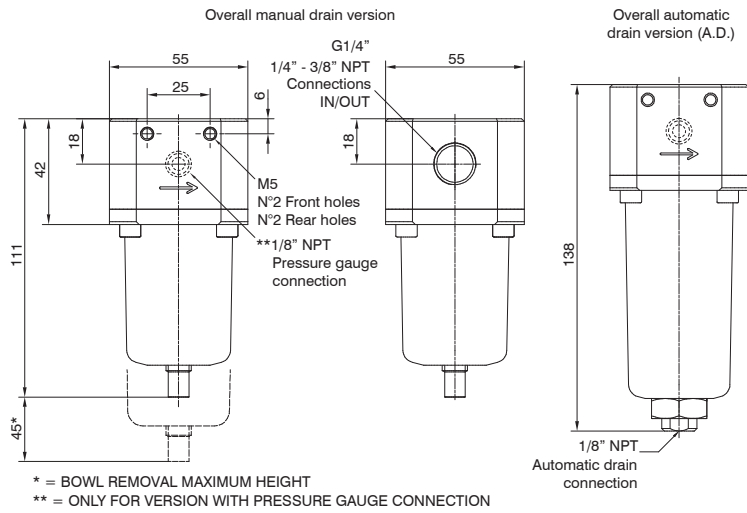


**Filters**



Ordering code	
<b>SV172CF5OZ</b>	
VERSION	
V	S = Standard surface finishing
	F = Clean profile
CONNECTIONS	
G	A = 1/4" NPT
	B = 3/8" NPT
	C = G1/4"
FILTER PORE SIZE	
S	A = 5 μm - 316 stainless steel
	B = 20 μm - 316 stainless steel
	C = 50 μm - 316 stainless steel
	D = 5 μm - HDPE
	E = 20 μm - HDPE
	F = 50 μm - HDPE
OPTIONS	
	= Standard*
	L = Low temperature
	Z = Low temperature (-60 °C)
H	H = High temperature
S	S = Automatic drain
SR	SR = Reduced orifice automatic drain
EF	EF = EPDM-FDA
ENCLOSURE OPTIONS	
Z	= Standard*
G	G = pressure gauge connection
* no additional letter required	

2 AIR SERVICE UNITS

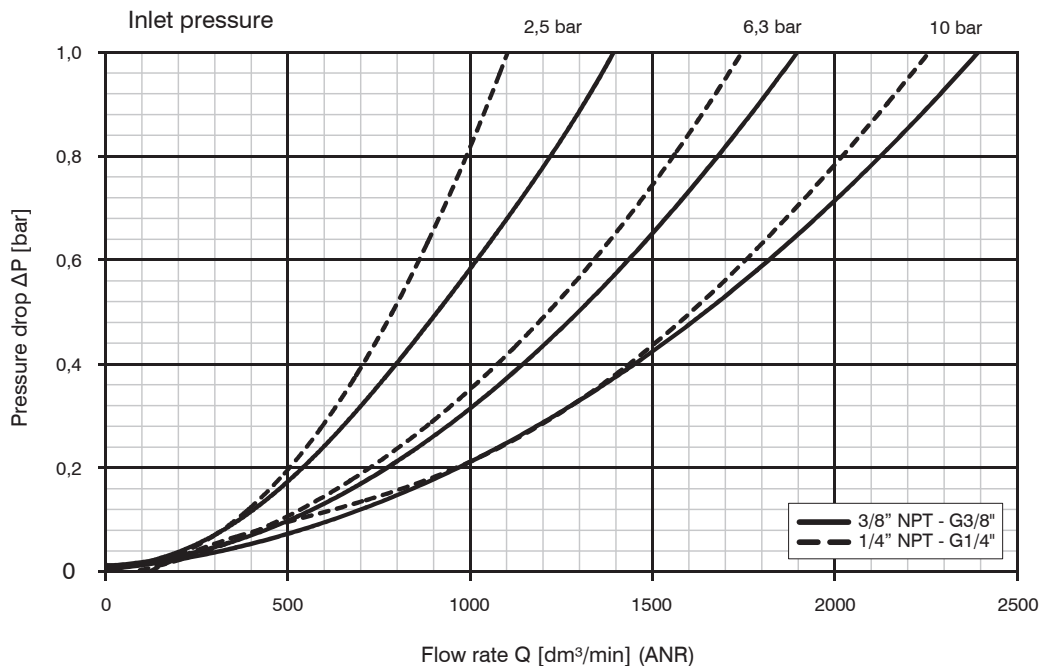
**Construction characteristics**

- Body, bowl and internal components in AISI 316L stainless steel.
- A4 (AISI 316) stainless steel fixing screws.
- Manual or automatic condensed drain

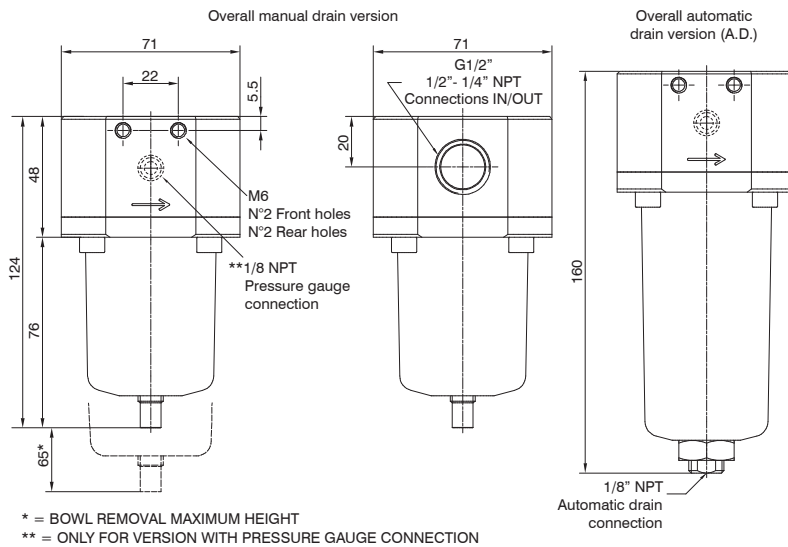
**Technical characteristics**

Maximum inlet pressure (standard version)	20 bar
Maximum inlet pressure (automatic drain version)	16 bar
Maximum inlet pressure (reduced orifice automatic drain version)	10 bar
Temperature (standard version)	-30°C +80°C
Temperature (low temperature version)	-50°C +80°C
Temperature (low temperature version -60°C)	-60°C +80°C
Temperature (high temperature version)	-5°C +150°C
Temperature (automatic and reduced orifice drain version)	-5°C +70°C
Temperature (EPDM-FDA version)	-40°C +100°C
Weight	1070 (gr.)
Bowl capacity	15 cm <sup>3</sup>
Assembly position	Vertical

**Flow rate chart**



**Filters**



Ordering code	
<b>SV173CF50Z</b>	
VERSION	
V	S = Standard surface finishing
	F = Clean profile
CONNECTIONS	
G	A = 1/4" NPT
	B = 1/2" NPT
	D = G1/2"
FILTER PORE SIZE	
A	A = 5 μm - 316 stainless steel
B	B = 20 μm - 316 stainless steel
S	C = 50 μm - 316 stainless steel
	D = 5 μm - HDPE
	E = 20 μm - HDPE
	F = 50 μm - HDPE
OPTIONS	
	= Standard*
	L = Low temperature
	Z = Low temperature (-60 °C)
O	H = Low temperature
	S = Automatic drain
	SR = Reduced orifice automatic drain
	EF = EPDM-FDA
ENCLOSURE OPTIONS	
Z	= Standard*
	G = pressure gauge connection
* no additional letter required	

2 AIR SERVICE UNITS

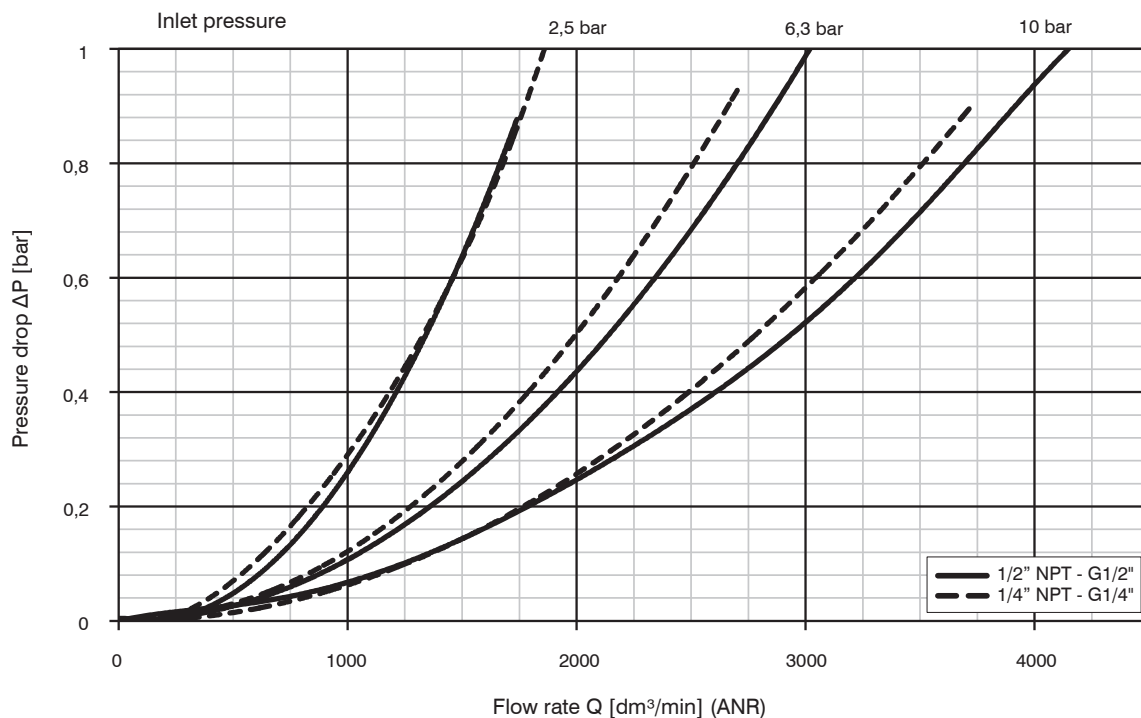
**Construction characteristics**

- Body, bowl and internal components in AISI 316L stainless steel.
- A4 (AISI 316) Stainless steel fixing screws.
- Manual or automatic condensed drain.

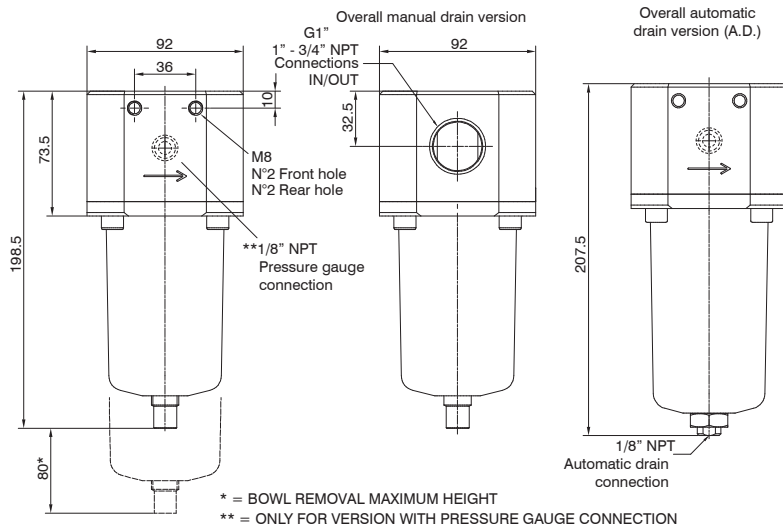
**Technical characteristics**

Maximum inlet pressure (standard version)	20 bar
Maximum inlet pressure (automatic drain version)	16 bar
Maximum inlet pressure (reduced orifice automatic drain version)	10 bar
Temperature (standard version)	-30°C +80°C
Temperature (low temperature version)	-50°C +80°C
Temperature (low temperature version -60°C)	-60°C +80°C
Temperature (high temperature version)	-5°C +150°C
Temperature (automatic and reduced orifice drain version)	-5°C +70°C
Temperature (EPDM-FDA version)	-40°C +100°C
Weight	1650 (gr.)
Bowl capacity	25 cm <sup>3</sup>
Assembly position	Vertical

**Flow rate chart**



**Filters**



Ordering code	
<b>SV174CF50Z</b>	
VERSION	
V	S = Standard surface finishing
	F = Clean profile
CONNECTIONS	
G	A = 3/4" NPT
	B = 1" NPT
	D = G1"
FILTER PORE SIZE	
A	A = 5 µm - 316 stainless steel
B	B = 20 µm - 316 stainless steel
S	C = 50 µm - 316 stainless steel
	D = 5 µm - HDPE
	E = 20 µm - HDPE
	F = 50 µm - HDPE
OPTIONS	
	= Standard*
L	L = Low temperature
Z	Z = Low temperature (-60 °C)
H	H = High temperature
S	S = Automatic drain
SR	SR = Reduced orifice automatic drain
EF = EPDM-FDA	
ENCLOSURE OPTIONS	
	= Standard*
Z	G = pressure gauge connection
* no additional letter required	

2 AIR SERVICE UNITS

**Construction characteristics**

- Body, bowl and internal components in AISI 316L stainless steel.
- A4 (AISI 316) stainless steel fixing screws.
- Manual or automatic condensed drain.

**Technical characteristics**

Maximum inlet pressure (standard version)	20 bar
Maximum inlet pressure (automatic drain version)	16 bar
Maximum inlet pressure (reduced orifice automatic drain version)	10 bar
Temperature (standard version)	-30°C +80°C
Temperature (low temperature version)	-50°C +80°C
Temperature (low temperature version -60°C)	-60°C +80°C
Temperature (high temperature version)	-5°C +150°C
Temperature (automatic and reduced orifice drain version)	-5°C +70°C
Temperature (EPDM-FDA version)	-40°C +100°C
Weight 3/4 NPT - G 3/4"	4700 (gr.)
Weight 1 NPT - G 1"	4600 (gr.)
Bowl capacity	78 cm <sup>3</sup>
Assembly position	Vertical

**Flow rate chart**

